

2002 10 15 11:33 AM 10/15/2002 11:33 AM 10/15/2002 11:33 AM

Parking Analysis

Floor	Room Name	Square Footage	Load Factor	Load	Spacious Road
Main Level	Dining Room	919 sq. ft.	15	6	15
	Conter-vatory	276 sq. ft.	15	4	4
	Patio	312 sq. ft.	15	2	5
	Screened Porch	542 sq. ft.	15	8	4
	Bar	594 sq. ft.	15	4	10
	Kitchen	1287 sq. ft.	200	6	
	Breakfast Room	278 sq. ft.	15	182	45
	Corridors	451 sq. ft.	300	2	
	Storage / Acc.	845 sq. ft.	300	3	
	Corridors	449 sq. ft.	300	364	
Upper Level	Office	228 sq. ft.	100	2	1
	Driving Room	587 sq. ft.	15	26	
	Storage / Acc.	624 sq. ft.	300	2	
	Meatting Room	751 sq. ft.	1	04	26

Note: Conditions of the Existing Conditional Use permit restrict maximum occupancy to 16 persons based on on-site parking realizations. Additional parking to be procured prior to full usage of the facility.

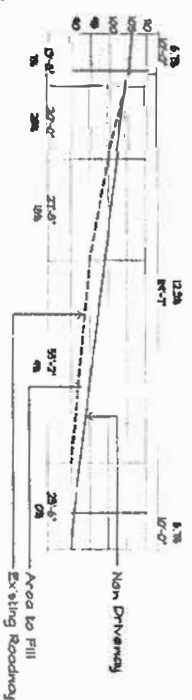
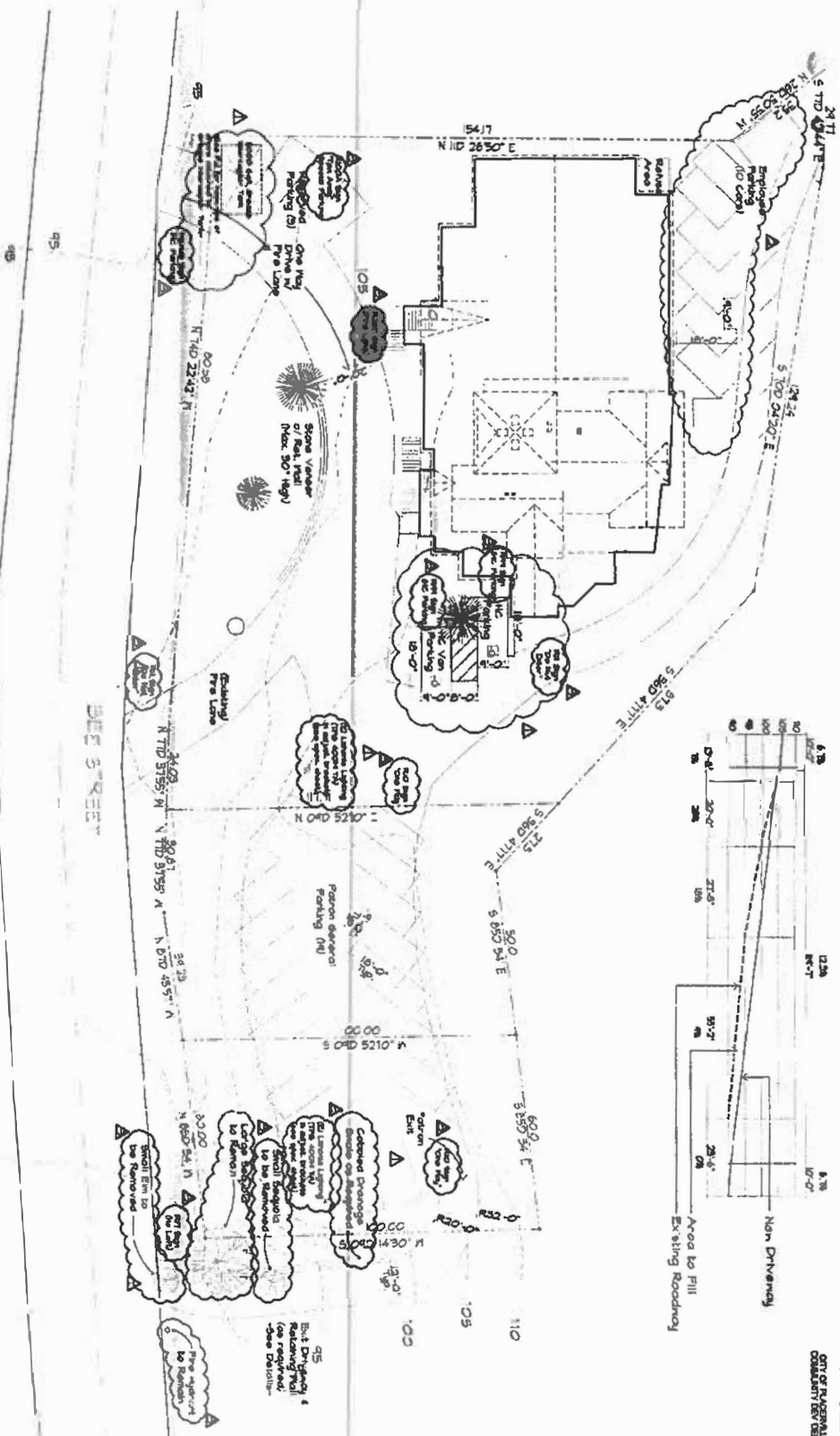
On Site Parking Provided:

Ramp Spaces	32	93
Compact Spaces	2	
HC Spaces	2	
Total Spaces	34	

Site Plan - Parking Layout

Scale: 1" = 20'-0" Approx.

- Notes:**
- Not a Certified Drawing.
 - Client to confirm alternatives for acquiring & procuring of equipment or materials.
 - Complete sign package to be submitted at a later date. Phase 2.



RECEIVED
OCT 8 2002
CITY OF PLACERVILLE
COMPLIANT DEPT 8071



643 Bee Street
Placerville, California
Sequoia Restaurant

Peter Wolfe
Architect
2000 Twelve Oaks
Placerville,
California 95667
Telephone:
(209)858-4232

Revisions

1	1/1	Issue
2	5/1	Plan Check
3	5/8	Perk. rev.
4	7/15	Plan Check

Sheet Contents
Site Plan - Parking Layout
A-1.1