



# Downtown Dover Parking

DDP Parking Committee Meeting

July 21, 2021

A photograph of a downtown street scene in Dover, Delaware, showing buildings, trees, and parked cars. The text "Downtown Dover Parking Management Plan" is overlaid in a large, bold, blue font.

# Downtown Dover Parking Management Plan

## Table of Contents

1. Schedule
2. Off-Street Parking
3. Off-Street Parking Management Options
4. Off-Street Permit Parking Management
5. Parking Facility Amenities

# Downtown Dover Parking Management Plan

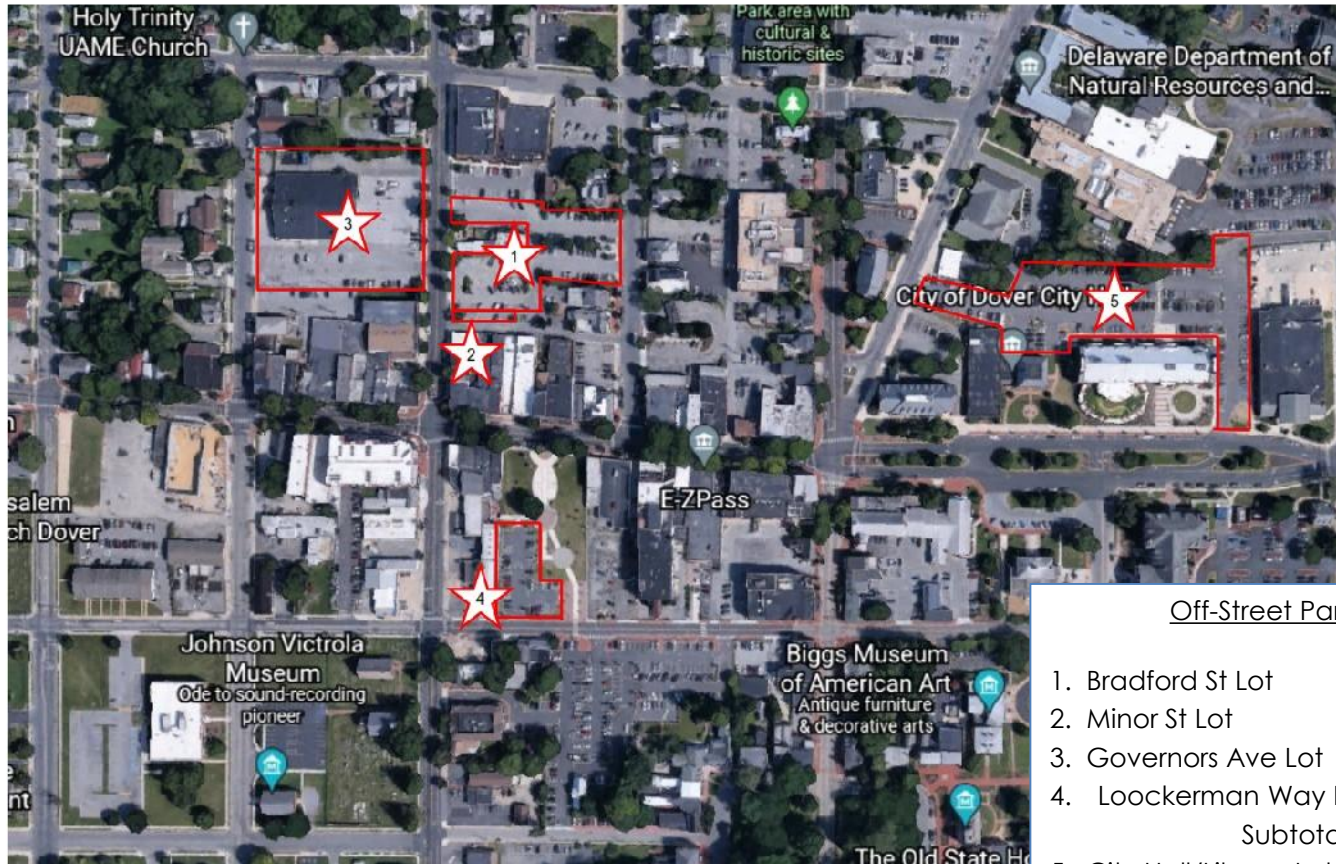


## Proposed Schedule

July 21, 2021	DDP Parking Comm	Review Parking Management Plan
August 11, 2021	Public Meeting	Review Parking Management Plan
August 18, 2021	DDP Parking Comm	Review Parking Management Plan
September 15, 2021	DDP Parking Comm	Review Parking Management Plan
September 21, 2021	Public Meeting	Review Parking Management Plan
September 28, 2021	Dover City Council	Present Parking Management Plan
October 20, 2021	DDP Parking Comm	Review Parking Management Implementation Plans
October 27, 2021	DDP Board of Directors	DDP Parking Comm recommendation to DDP BOD

# Downtown Dover Parking Management Plan

## Off-Street Parking



Off-Street Parking Spaces

1. Bradford St Lot	112-spaces
2. Minor St Lot	8-spaces
3. Governors Ave Lot	100-spaces
4. Lookerman Way Lot	35-spaces
Subtotal	255-spaces
5. City Hall/Library Lot	140-spaces
Total	395-spaces

Some consideration should be given to:

- City Hall-Library Parking Lot as part of Off-Street Parking Inventory

## Off-Street Parking Management Options

1. No Equipment
2. Multi-Space-Meter (MSM)
  - 2a. MSM with a Manual “LOT FULL” Sign
  - 2b. MSM with Loop Count System
  - 2c. MSM with License Plate Recognition (LPR) Count System
3. Full Parking Access and Revenue Control System (PARCS) including gates

# Downtown Dover Parking Management Plan

## Off-Street Parking Management Options



### 1. No Equipment

ParkMobile payment for Hourly Customers. ParkMobile would be given a maximum “inventory” of hourly spaces to sell. Once the maximum number is sold, ParkMobile would not allow additional sales until existing parking sessions expire.

#### Cost Estimate

- \$0 (\$0.35 per transaction)



# Downtown Dover Parking Management Plan

## Off-Street Parking Management Options



### 1. No Equipment

#### Pros

- Provides unrestricted access to Lot
- No additional investment

#### Cons

- Customer Experience concerns
  - Limited control of space for Hourly Customers and Permit Customers
- No Lot Full notification



# Downtown Dover Parking Management Plan



## Off-Street Parking Management Options

### 2. Multi-Space-Meter (MSM)

A MSM has the ability to limit the number of parking sessions and determine when to stop selling hourly parking, similar to ParkMobile.

#### Cost Estimate

- \$7,500 (MSM)





# Downtown Dover Parking Management Plan



## Off-Street Parking Management Options

### 2. Multi-Space-Meter (MSM)

#### Pros

- Provides unrestricted access to Lot
- Familiar payment system, same as on-street

#### Cons

- Customer Experience concerns
  - Limited control of space for Hourly Customers and Permit Customers
  - No Lot Full notification



# Downtown Dover Parking Management Plan



## Off-Street Parking Management Options

### 2a. MSM with a Manual “LOT FULL” Sign

An MSM has the ability to limit the number of parking sessions and determine when to stop selling hourly parking. Enforcement staff would turn a “LOT FULL” sign on and off based on physical lot counts.

#### Cost Estimate

- \$17,500 (\$7,500 MSM, \$5,000 per sign)



# Downtown Dover Parking Management Plan



## Off-Street Parking Management Options

### 2a. MSM with a Manual “LOT FULL” Sign

#### Pros

- Provides unrestricted access to Lot
- Familiar payment system, same as on-street
- LOT FULL notification to customers

#### Cons

- Customer Experience concerns
  - Limited control of space for Hourly Customers and Permit Customers
  - Sign will not prevent access to the lot
- LOT FULL sign depends on personnel



# Downtown Dover Parking Management Plan



## Off-Street Parking Management Options

### 2b. MSM with Loop Count System

An MSM has the ability to limit the number of parking sessions and determine when to stop selling hourly parking. A loop count system would count the total cars in and out of the lot and trigger the “FULL” sign automatically based on total lot count.

#### Cost Estimate

- \$32,500 (\$7,500 MSM, \$5,000 per sign, \$15,000 count system)



# Downtown Dover Parking Management Plan



## Off-Street Parking Management Options

### 2b. MSM with Loop Count System

#### Pros

- Provides unrestricted access to Lot
- Familiar payment system, same as on-street
- LOT FULL notification to customers
- Automatically activation of LOT FULL sign

#### Cons

- Customer Experience concerns
  - Limited control of space
  - Sign will not prevent access to the lot
- Loop counts require regular adjustments



# Downtown Dover Parking Management Plan



## Off-Street Parking Management Options

### 2c. MSM with License Plate Recognition (LPR) Count System

LPR could count cars and control the “LOT FULL” sign. An LPR System can integrate with the MSM to allow counting of Permit and Hourly Customers independently.

#### Cost Estimate

- \$57,500 (\$7,500 MSM, \$5,000 per sign, \$40,000 LPR system)



# Downtown Dover Parking Management Plan



## Off-Street Parking Management Options

### 2c. MSM with License Plate Recognition (LPR)

#### Count System

##### Pros

- Provides unrestricted access to Lot
- Familiar payment system, same as on-street
- LOT FULL notification to customers
- Automatically activation of LOT FULL sign
- LPR integration to improve space utilization

##### Cons

- Customer Experience concerns
- Significant investment



# Downtown Dover Parking Management Plan



## Off-Street Parking Management Options

### 3. Full Parking Access and Revenue Control System (PARCS) including gates

A PARCS system would provide full control to efficiently manage the Parking Facility.

Cost Estimate

- \$95,000 (PARCS)





# Downtown Dover Parking Management Plan



## Off-Street Parking Management Options

### 3. Full Parking Access and Revenue Control System (PARCS) including gates

#### Pros

- Customer experience
- Offers an easy & flexible validation option for merchants

#### Cons

- Restricts access to Lot
- Significant investment



# Downtown Dover Parking Management Plan



## Off-Street Parking Management Options Matrix

Option	Description	Est. Cost	Pros	Cons
1	No Equipment, ParkMobile only	\$0	<ul style="list-style-type: none"> <li>) Provides unrestricted access to Lot</li> <li>) No additional investment</li> </ul>	<ul style="list-style-type: none"> <li>) Limited control</li> <li>) Inefficient space utilization</li> <li>) Negative customer experience - Full Lot</li> <li>) Mobile Payment ONLY</li> </ul>
2	MSM	\$7,500	<ul style="list-style-type: none"> <li>) Provides unrestricted access to Lot</li> <li>) Accepts coin, credit &amp; mobile pay</li> <li>) Familiar payment system</li> </ul>	<ul style="list-style-type: none"> <li>) Limited control</li> <li>) Inefficient space utilization</li> <li>) Negative customer experience - Full Lot</li> </ul>
2a	MSM with a manual sign	\$17,500	<ul style="list-style-type: none"> <li>) Provides unrestricted access to Lot</li> <li>) Accepts coin, credit &amp; mobile pay</li> <li>) Familiar payment system</li> <li>) Better customer experience – Full Lot</li> </ul>	<ul style="list-style-type: none"> <li>) Limited control</li> <li>) Inefficient space utilization</li> <li>) Sign won't prevent access to lot</li> <li>) Manual sign change required</li> </ul>
2b	MSM with a count system & sign	\$32,500	<ul style="list-style-type: none"> <li>) Provides unrestricted access to Lot</li> <li>) Accepts coin, credit &amp; mobile pay</li> <li>) Familiar payment system</li> <li>) Better customer experience – Full Lot</li> <li>) Automatically activates "LOT FULL" sign</li> </ul>	<ul style="list-style-type: none"> <li>) Limited control</li> <li>) Inefficient space utilization</li> <li>) Sign won't prevent access to lot</li> <li>) Loop counts unreliable</li> </ul>
2c	MSM with an LPR count system & sign	\$57,500	<ul style="list-style-type: none"> <li>) Provides unrestricted access to Lot</li> <li>) Accepts coin, credit &amp; mobile pay</li> <li>) Familiar payment system</li> <li>) Better customer experience – Full Lot</li> <li>) Automatically activates "LOT FULL" sign</li> <li>) Efficient space utilization</li> <li>) Detailed parking data captured</li> </ul>	<ul style="list-style-type: none"> <li>) Limited control</li> <li>) Sign won't prevent access to Lot</li> <li>) Significant investment</li> </ul>
3	Full PARCS with gates	\$95,000	<ul style="list-style-type: none"> <li>) Accepts cash, credit &amp; mobile pay</li> <li>) Better customer experience – Full Lot</li> <li>) Automatically activates "LOT FULL" sign</li> <li>) Space for Permit and Hourly Customers</li> <li>) Detailed parking data</li> <li>) Easy &amp; flexible validations</li> </ul>	<ul style="list-style-type: none"> <li>) Restricts access to Lot</li> <li>) Significant investment</li> </ul>

# Downtown Dover Parking Management Plan



## Off-Street Permit Parking Management

Colonial Parking will issue a vehicle credential that will be placed in the windshield of Permit Customer's vehicles.

Colonial enforcement staff will be able to scan the barcoded credential to confirm the credential is valid for parking at the DDP Off-Street Parking Facilities.



# Downtown Dover Parking Management Plan



## Parking Facility Amenities

Implement amenities in the Bradford Street Parking Lot now:

- Electric Vehicle (EV) Charging
  - Estimated Cost - \$16,000
- Bicycle racks
  - Estimated Cost - \$3,500





# Downtown Dover Parking

---

Questions?