



**ENNIS CITY COMMISSION  
SPECIAL MEETING AGENDA  
FRIDAY, DECEMBER 19, 2025  
5:00 PM**

CITY OF ENNIS CITY HALL  
COMMISSION CHAMBERS  
107 N. SHERMAN  
ENNIS, TEXAS 75119  
(972) 875-1234

As authorized by Texas Government Code Section 551.071 - this meeting may be convened into closed Executive Session for the purposes of seeking confidential legal advice from the City Attorney on any item on the agenda at any time during the meeting.

The City of Ennis reserves the right to re-align, recess, or reconvene the Regular Session or called Executive Session or order of business at any time prior to adjournment.

**CITY COMMISSION MEETINGS ARE NOW LIVESTREAMED AT:**

**[www.ennistx.gov/citycommissionlivestream](http://www.ennistx.gov/citycommissionlivestream)**

**A. CALL TO ORDER**

- Roll Call
- Invocation
- Pledge of Allegiance

**B. ITEMS FOR DISCUSSION AND INDIVIDUAL CONSIDERATION**

- B.1. Discuss and consider approval of a Resolution of the City Commission of the City of Ennis, Texas, ratifying and consolidating professional design services agreements with Garrison/Jones Landscape Architects for the Tim Gauna Park project; acknowledging prior execution of Additional Service #01; authorizing the Mayor to execute a consolidated and restated professional services agreement; and providing for an effective date.

[PSA Garrison Jones LLC, Tim Gauna Park Design](#)

- B.2. Discuss and consider a Resolution approving a bid award to S-Co Incorporated for the Paris Street Waterline Relocation project and authorizing the Mayor to execute a contract in an amount not to exceed Three Hundred Thirty-Six Thousand Eight Hundred Seventeen Dollars and Zero Cents (\$336,817.00), and authorizing the City Manager or designee to execute any documents in connection therewith.

[Paris Street Waterline Relocation](#)

**C. ADJOURNMENT**

I, the undersigned authority, do hereby certify that this Notice of Meeting was posted in accordance with the regulations of the Texas Open Meetings Act on the bulletin board located at the entrance to the City of Ennis City Hall, a place convenient and readily accessible to the general public, as well as to the City's website at [www.ennistx.gov](http://www.ennistx.gov) and said Notice was posted prior to the following date and time: **Monday, December 15, 2025, 5:00 P.M.** and will remain posted for at least two hours after said meeting was convened.



---

ANGIE WADE, TRMC, CMC  
City Secretary

City of Ennis City Commission meetings are available to all persons regardless of disability. If you require special assistance, please contact the City Secretary at (972) 875-1234 or write to: PO Box 220, Ennis, TX 75120, at least 48 hours in advance of the meeting.

## ENNIS CITY COMMISSION AGENDA SUMMARY FORM



**To:** City Commission

**Subject:** Discuss and consider approval of a Resolution of the City Commission of the City of Ennis, Texas, ratifying and consolidating professional design services agreements with Garrison/Jones Landscape Architects for the Tim Gauna Park project; acknowledging prior execution of Additional Service #01; authorizing the Mayor to execute a consolidated and restated professional services agreement; and providing for an effective date.

**Meeting:** ENNIS CITY COMMISSION - 19 May 2026

**Department:** Administration

**Staff Contact:** Daniel Ortiz, Assistant City Manager

### BACKGROUND INFORMATION:

#### **Background, Procurement History, and Purpose**

This agenda item is presented to outline the procurement history, contract authorization, and scope of professional design services associated with the Tim Gauna Park project, and to provide transparency regarding the evolution of the project's professional services agreement. As the project has progressed through multiple design phases and contractual amendments, staff has conducted a comprehensive review of the original agreement and subsequent additional services to ensure City Commission actions are clearly documented, procedurally sound, and aligned with municipal governance and procurement requirements. The information below is intended to clarify the basis for the proposed resolution to ratify and consolidate the professional services agreement, memorialize prior actions, and establish a clear and complete legislative record for the project.

#### **Contract Authorization History, Procurement Background, and Scope of Services**

##### ***Tim Gauna Park – Professional Design Services: Procurement Background – Request for Qualifications (RFQ)***

The professional services for the Tim Gauna Park project were procured through a formal Request for Qualifications (RFQ 23-101-10) issued by the City of Ennis for architectural and landscape architectural design services. Statements of Qualifications were evaluated and ranked in accordance with the Texas Professional Services Procurement Act (Texas Government Code Chapter 2254). Based on that evaluation, Garrison/Jones Landscape Architects was determined to be the most qualified firm and was selected to provide professional design services for the project.

This procurement process culminated in City Commission action on June 20, 2023, authorizing execution of the original professional services agreement.

##### ***Original Contract Authorization and Scope of Services***

On June 20, 2023, the Ennis City Commission approved Resolution No. 23-0620-F4, authorizing the City Manager to execute a professional services agreement with Garrison/Jones Landscape

## B.1.

Architects for the design of Tim Gauna Park in an amount not to exceed \$306,700.00, plus allowable contingencies.

The original scope of services established Garrison/Jones as the City's prime design consultant and included comprehensive professional services necessary to advance the park project from concept through construction. The approved scope included, but was not limited to, the following:

### Project Management and Consultant Coordination

- Overall project management and coordination of subconsultants;
- Ongoing coordination with City departments and staff;
- Regular project meetings, schedule tracking, and progress updates.

### Design Phases

- Site and Program Analysis: Evaluation of existing conditions, confirmation of park program elements, and alignment with project goals and budget.
- Schematic Design: Development of conceptual site plans, preliminary layouts, design themes, and initial opinions of probable construction cost.
- Design Development: Refinement of design details, materials, circulation, grading, and amenities, including updated cost estimates.
- Construction Documents: Preparation of detailed plans, specifications, and technical documents suitable for bidding and construction.

### Park Program Elements

Design services included coordination and documentation for a full range of park features, including:

- Pedestrian circulation, plazas, and gathering spaces;
- Open lawn and flexible event areas;
- Playground and recreational amenities;
- Splash pad / water feature (with aquatic design to be provided by others);
- Basketball and sport court elements;
- Restroom building and pavilion structures;
- Landscaping, irrigation, hardscape, lighting, and wayfinding.

### Bidding and Construction Phase Services

- Assistance with bidding, addenda, and bid evaluation;
- Construction observation, site visits, and review of submittals, RFIs, and pay applications;
- Punch list coordination and project closeout support.

## **Additional Service #01 – Expanded Scope of Services (Executed by City Manager February 2, 2024)**

As the project advanced, design refinement, budget alignment, and additional technical requirements resulted in the preparation of GJ23040 – Additional Service #01 Tim Gauna Park, dated December 21, 2023. This amendment expanded the scope of services beyond what was contemplated in the original agreement and was executed by the City Manager on February 2, 2024.

Additional Service #01 included the following expanded scope elements:

### 1. Project Budget Increase and Design Coordination

- The anticipated park construction budget increased from approximately \$3.2 million to \$4.0 million.
- Additional design coordination and project management services were required to revisit prior assumptions, refine scope elements, and align the design with updated budget parameters.
- These services included additional internal coordination, design adjustments, and cost reconciliation efforts.



B.1.

2. Aquatic Engineering Services for Water Feature

- Engagement and coordination of an aquatic engineering consultant to provide mechanical, electrical, and plumbing (MEP) design services for the splash pad / water feature.
- Preparation of design development and construction documentation to:
  - Clearly define the water feature scope for bidding;
  - Ensure integration with civil, architectural, and landscape systems; and
  - Reduce construction risk by providing complete and coordinated technical drawings.

3. Art Consultant Services – Globe Sculpture Concept

- Engagement of an art consultant to develop conceptual design and pricing parameters for a globe sculpture element intended to honor Timothy L. Gauna.
- Services were limited to concept development and budget guidance only.
- Fabrication, procurement, and installation of the art piece were not included in this scope.

4. Fee and Contract Impact

Additional Service #01 increased the professional services contract by \$76,000.00, bringing the revised contract total to \$382,700.00.

***Review of City Commission Authorization***

As part of the City's comprehensive review of the Tim Gauna Park project and associated professional services agreements, staff conducted a detailed review of City Commission agendas, resolutions, and official minutes.

Based on this review:

- Additional Service #01 was executed administratively by the City Manager, but
- No City Commission agenda item, resolution, or recorded City Commission action authorizing or ratifying Additional Service #01 could be located.
- The original June 20, 2023 resolution authorized execution of the base agreement only and did not include express authorization for subsequent scope expansions or increases in the contract amount beyond the original not-to-exceed value.

Accordingly, while Additional Service #01 addressed legitimate project needs and services were performed, there is no formal City Commission record validating approval of this amendment at the time of execution.

***Prior City Commission Update***

On April 1, 2025, the City Commission received a comprehensive update on the Tim Gauna Park project, including revised design concepts, program elements, and updated cost information. The presentation outlined the evolution of the project design, key cost drivers, and efforts to realign the scope of work with the City's established budget parameters. The update provided the City Commission with context on design refinements, budget considerations, and next steps for advancing the project.

***Purpose of Current Action and Consolidation***

The purpose of the current agenda item is to address this procedural gap in a transparent and orderly manner by:

- Consolidating the original agreement and all subsequent additional services into a single, standardized professional services agreement;
- Formally memorializing and ratifying the expanded scope and compensation associated with Additional Service #01;
- Clearly documenting the full scope of professional services provided for the Tim Gauna Park project; and

B.1.

- Ensuring alignment with City procurement practices, governance standards, and best practices for professional services contracts.

This action does not alter work already performed or create new contractual obligations beyond those previously contemplated. Rather, it ensures that the City Commission's authorization is fully documented, transparent, and reflected in the City's official legislative record.

#### **FINANCIAL IMPACT:**

This action consolidates and documents the full cost of professional design services for the Tim Gauna Park project as reflected in Exhibit "A" of the agreement.

- Original professional services agreement (June 2023): \$306,700.00
- Additional Service #01 (executed February 2, 2024): \$76,000.00
- Additional Service #02 (included in Exhibit "A"): \$68,000.00
- Total consolidated professional services amount: \$450,700.00

The additional service agreements exclude taxes. All taxes required by law, regulation, and applicable tax authority are the sole responsibility of the City and are in addition to the fees identified above. In addition to the professional services fees, the City agrees to reimburse Garrison/Jones for reasonable out-of-pocket expenses, which may include postage, printing, plotting, long-distance communications, courier services, reproduction of drawings, travel, lodging, and applicable TDLR fees. Reimbursable expenses shall be billed separately at actual cost plus a ten percent (10%) administrative fee.

Approval of this item does not appropriate new funds but formalizes the consolidated contract amount, subject to budget availability and City Commission approval of any future amendments.

#### **RECOMMENDATION:**

Staff recommends approval of agreement with Garrison Jones LLC.

#### **ATTACHMENTS:**

[Tim Gauna Park-Design Update CC Mtg 04012025](#)

[RESOLUTION NO.-PSA with Garrison Jones LLC for Tim Guana Park Design - Pdf](#)



# Tim Gauna Discovery Park

## Design Updates

Ennis, Texas  
January 08, 2025

## Revisiting Project Goals

- To *celebrate Tim Gauna*, but not necessarily a memorial
- City identity & authenticity “*What makes it Ennis?*”
- *Family* focused, inclusive
- *Experiential & high-quality* destination
- *Catalyst* for future developments & opportunities, setting an example

- *Program requirements:*

open lawn, playground, splashpad, half basketball court, shade structure, food truck access, restrooms & storage, the story of Tim Gauna





# Concept Plan - by DTJ, 7/27/2023



Budget:  
\$ 4m

Estimated Cost:  
\$ 6.4m

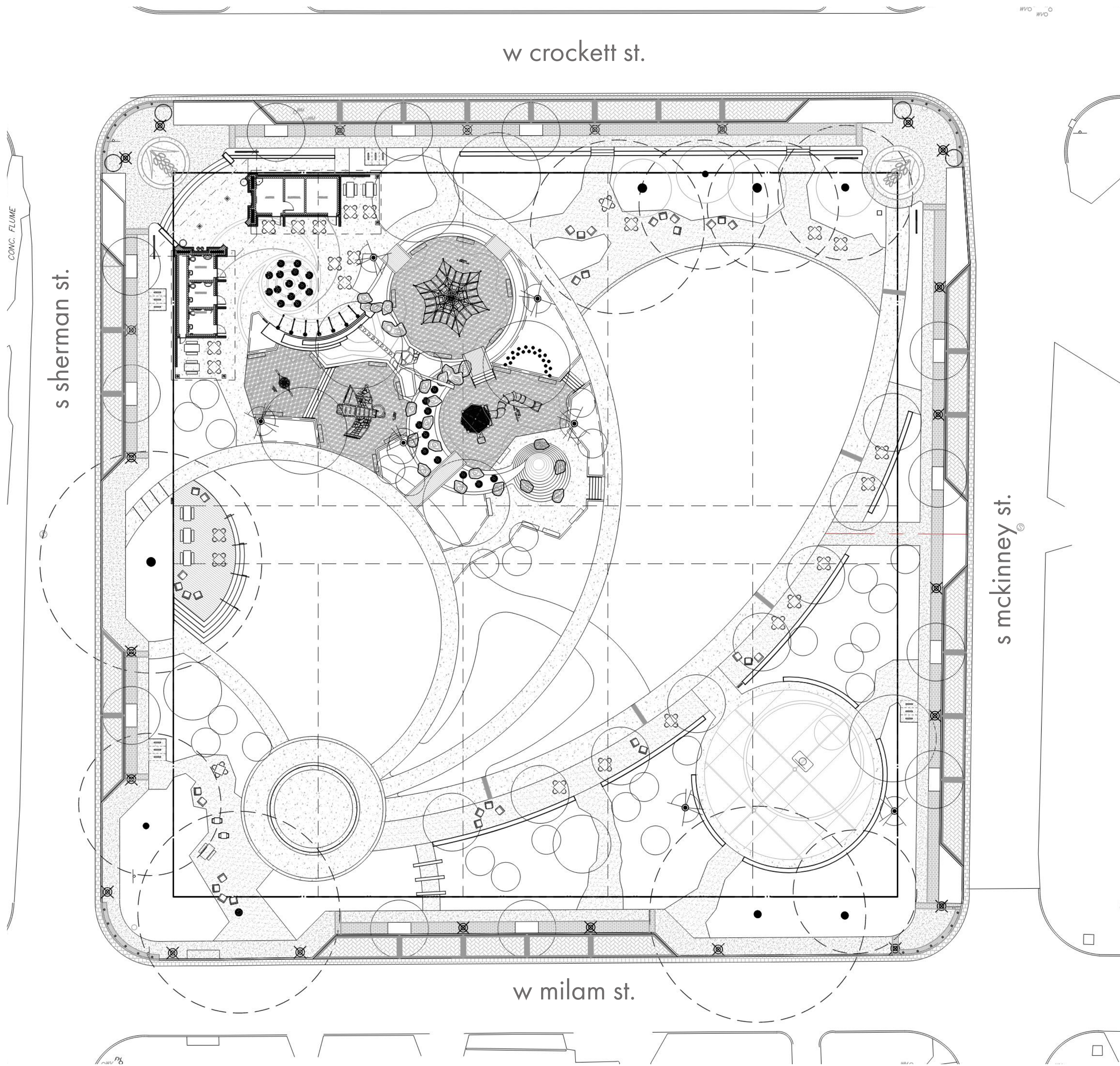
Baseline Park \$ 2.89m

Major Cost Drivers:

- Lawn \$ 25k
- Playground \$ 675k
- Splash pad \$ 750k
- Basketball court \$ 50k
- Food Truck Access \$ 15k
- Restrooms, Storage, Shade \$ 1.35m
- Story of Tim Gauna (Globe sculpture) \$ 650k



# DD Design - 03/18/2024



Budget:  
\$ 4m

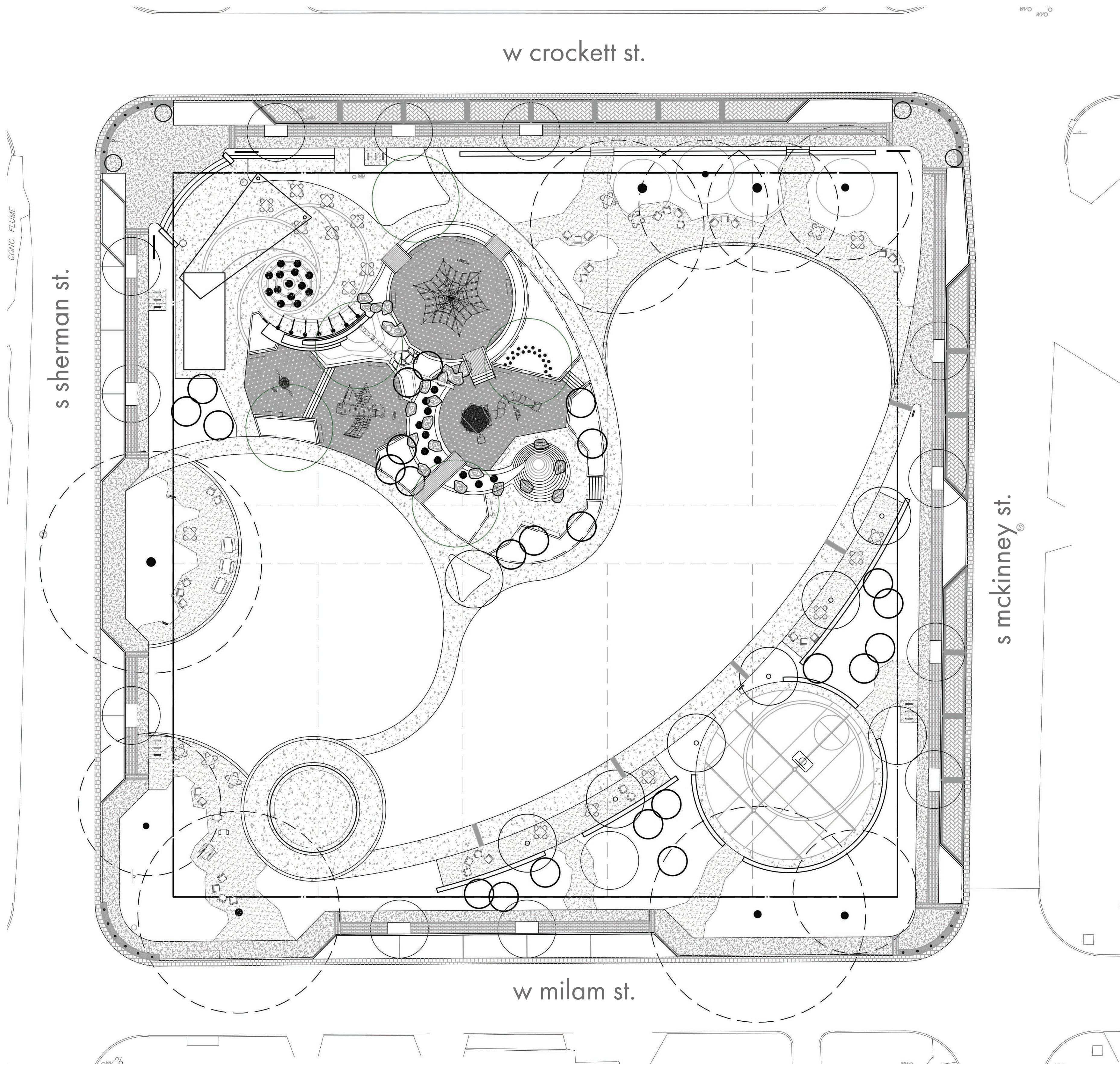
Estimated Cost:  
\$ 6.2m

Baseline Park  
\*includes street and utility improvements  
\$ 3.66m

Major Cost Drivers:	
-Lawn	\$ 35k
-Playground	\$ 395k
-Splash pad	\$ 505k
-Basketball court	\$ 65k
-Food Truck Access	\$ 15k
-Restrooms, Storage, Shade	\$ 1.1m
-Story of Tim Gauna (Globe sculpture)	\$ 523k



# First Pass Design VE - 11/21/2024



Budget:  
\$ 4m

Estimated Cost:  
\$ 5m

Baseline Park \$ 2.95m

Major Cost Drivers:

-Lawn	\$ 65k
-Playground	\$ 395k
-Splash pad	\$ 505k
-Basketball court	\$ 65k
-Food Truck Access	\$ 15k
-Restrooms, Storage, Shade	\$ 500k
-Story of Tim Gauna (Globe sculpture)	\$ 523k

Cost Reductions:  
Hardscape/Landscape design simplified & Lawn expanded,  
Street and utility improvements omitted,  
Restroom / Storage / Shade building simplified



Architexas

Tim Gauna Discovery Park  
Design Updates

01/08/2025

City of Ennis  
Ennis, Texas

Garrison/Jones Landscape Architects  
400 N Ervay St #132815  
Dallas, TX 75201

0 10 20 40  
This information is based on the most  
current information available and is  
intended for conceptual use only.



# Design Update - 01/08/2025



Budget:  
\$ 4m

Estimated Cost:  
\$ 4m

Baseline Park \$ 2.7m

Major Cost Drivers:

-Lawn	\$ 73k
-Playground	\$ 395k
- <b>Splash pad</b>	<b>\$ 250k</b>
-Basketball court	\$ 65k
-Food Truck Access	\$ 15k
-Restrooms, Storage, Shade	\$ 500k
-Story of Tim Gauna ( <del>Globe sculpture</del> )	<del>\$ 523k</del>

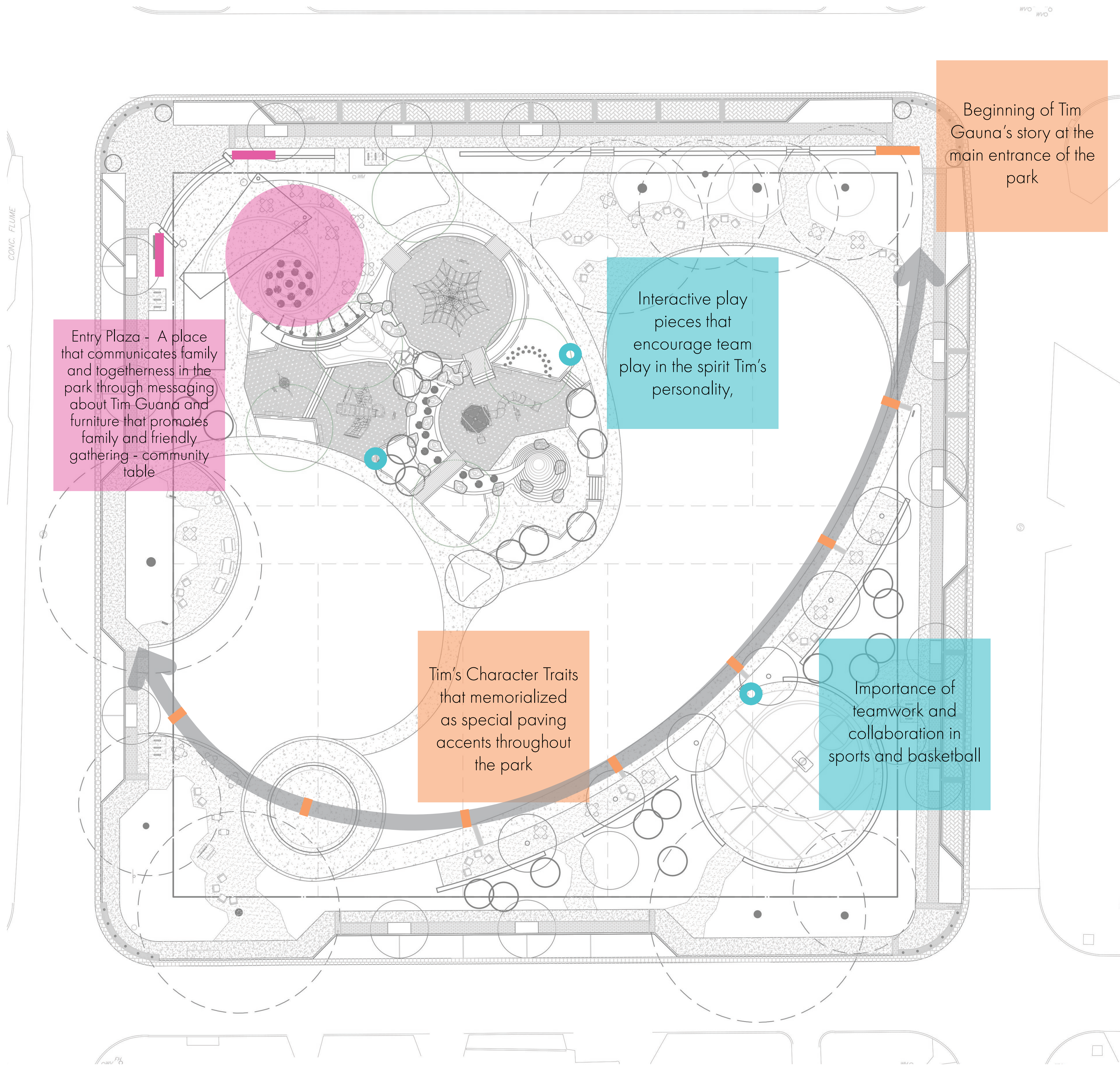
\* Signage included in Baseline Park cost

Cost Reductions:

Hardscape/Landscape design further reduced,  
Lawn further expanded,  
Splash pad remained but water runnel omitted,  
Globe sculpture omitted,  
Streetscape simplified, pavers omitted  
Potential streetlight savings (retrofit current stock of pole/fixtures)  
Potential utility savings (re-use existing water meter)

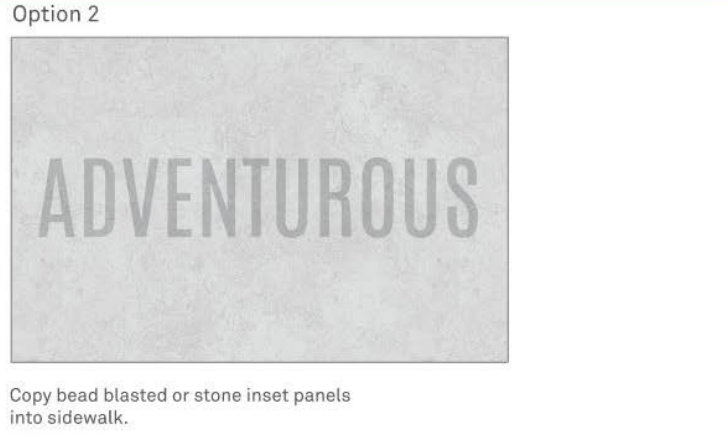
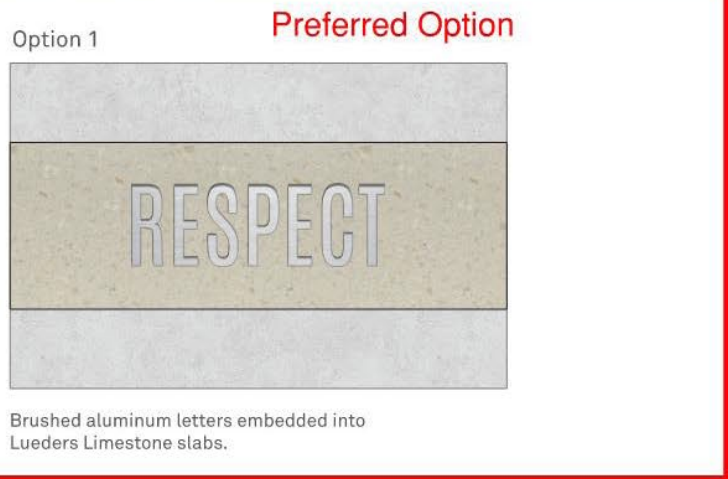
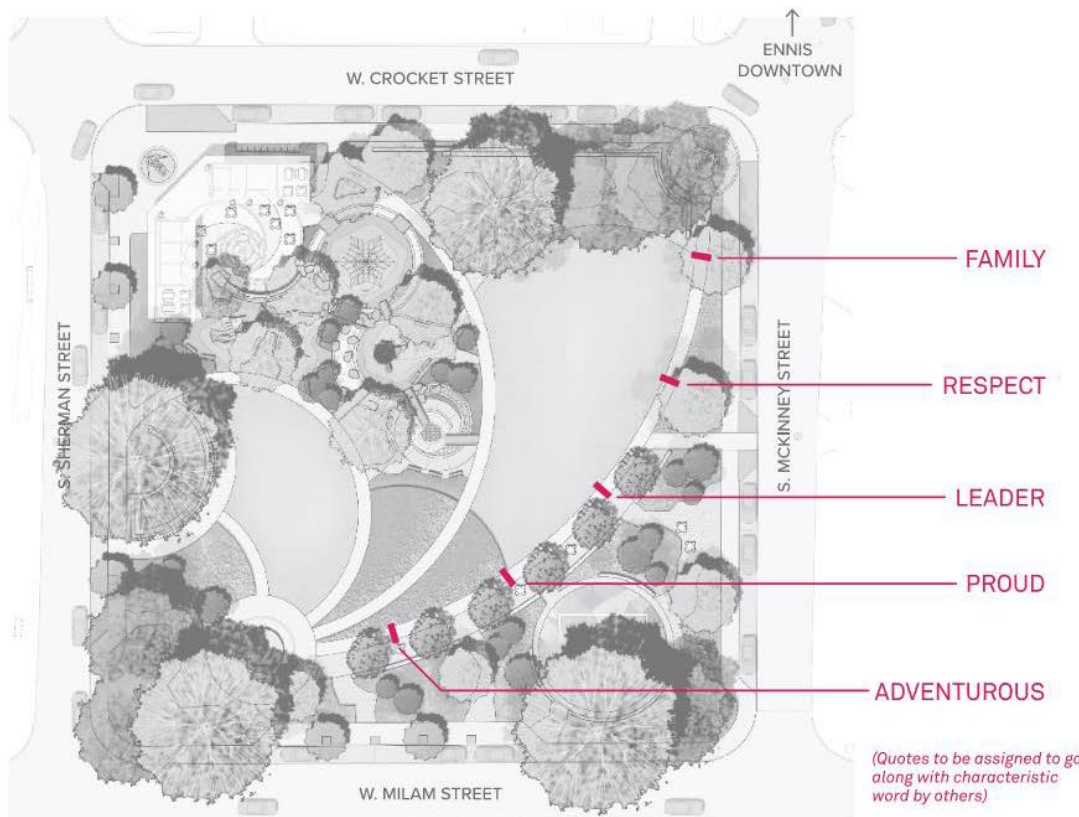


# Tim's Story/Wayfinding/Messages



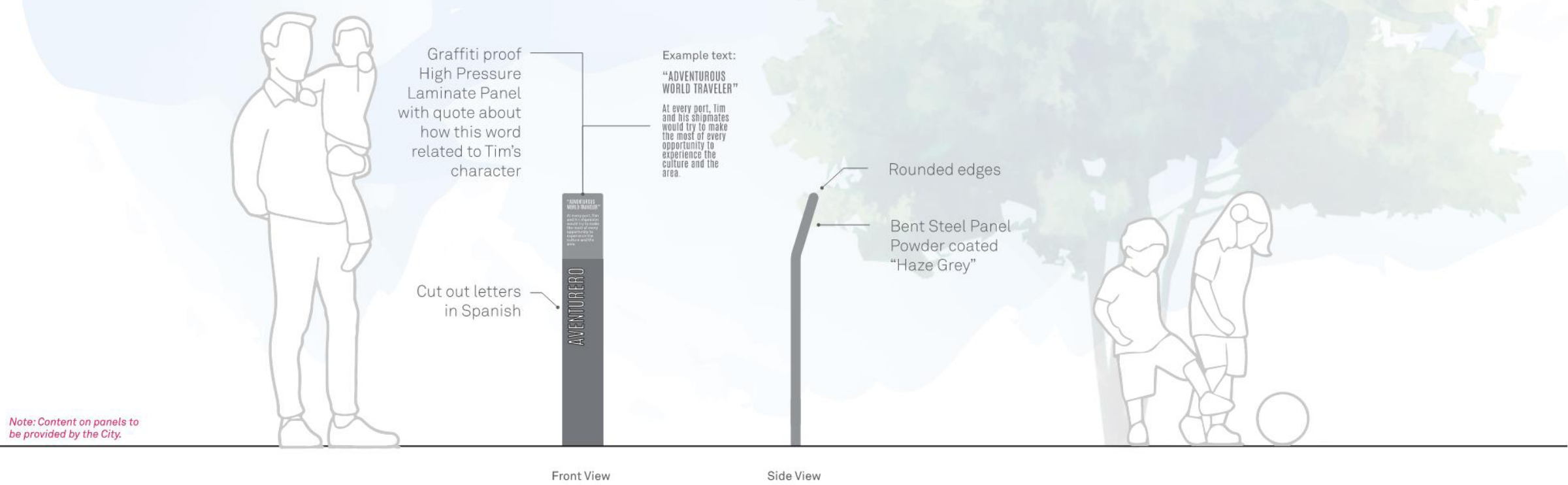
As visitors walk towards the heart of the park, they come across characteristic words integrated into the hardscape. These words epitomize Tim Gauna's fundamental principles, offering another avenue to engage with his legacy.

These letters may take the form of a discreet bead-blasted treatment within the hardscape or be embedded brushed aluminum letters, seamlessly blending into the park's design.



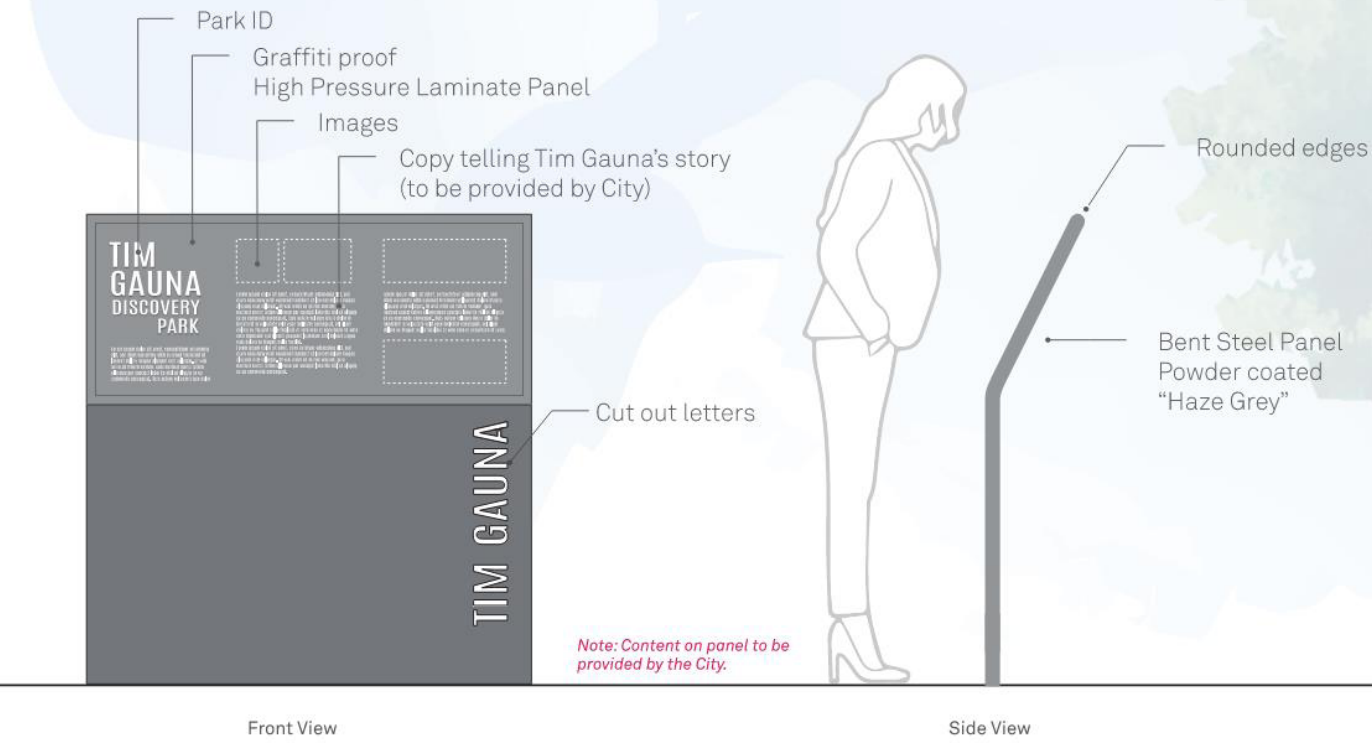
Adjacent to the hardscape features, small information panels are strategically placed, providing a brief narrative about the connection with Tim Gauna and what these words meant to him. As visitors walk the central path of the park, these panels gradually unveil insights into Tim's characteristics and values throughout his life.

Similar to the larger information panel, these panels adopt muted colors, with a backdrop of haze grey, serving as a tribute to Tim's words and memory.



As the center piece of the park near the sculptural feature is the large informational panel. This panel provides a detailed story of who Tim Gauna was, the core values he lived by, and how he died for his country. Visitors are able to stop and read about the impact of Tim's life through the detailed information and graphic images presented on this sign. Elements of Tim's story as seen on the mural walls and along the pathway will become clear as you read through his life story.

The sign colors have been muted in honor of Tim's memory. Haze Grey is the color of the US Navy battleship where he was stationed. The grey color symbolizes Tim's commitment to his country.



**Panel Content Guidelines:**

**Introduction** - The panel is dedicated to Tim, who encapsulates the spirit and resilience of the Ennis community.

**Community** - The important role of Tim in the Ennis community and his strong relationship with family and friends (photograph of Tim in the community with friends and family).

**Career/Achievements** - Tim's time in the Navy and his notable accomplishments. (image of Tim in the Navy)

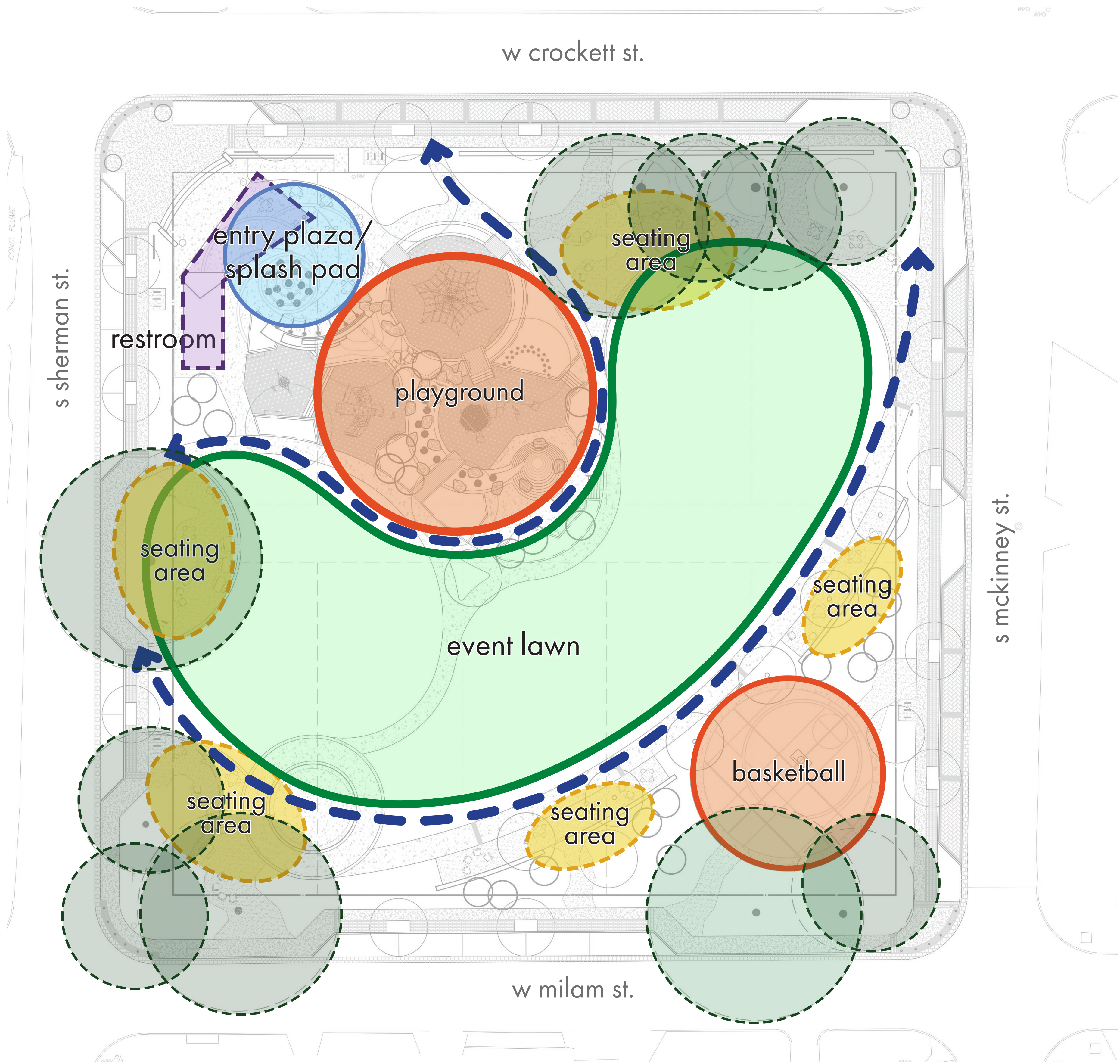
**Tim's Service to the County** - Provide the story/history of Tim's death

**Legacy** - Tim's lasting impact on the community - reflections from the community on his legacy - quotes?

**Conclusion** - As you explore the park, we invite you to reflect on Tim's legacy as a remarkable individual who left an indelible mark on the Ennis community. May his story inspire us to embrace our own journeys with courage, compassion, and conviction.



# Design Update - 01/08/2025 (with existing trees)







## Tim Gauna Park

Ennis, TX

### Opinion of Probable Cost

9/29/2023

1 Architectural Scope	quantity	unit	unit cost	sub-total	remarks
3 Unisex Restrooms / Janitors closet / Electrical Storage	1	allow	\$ 750,000.00	\$ 750,000.00	Provided by Architexas
Custom Pavilion	3	allow	\$ 200,000.00	\$ 600,000.00	
<i>Architectural Sub-total</i>				\$ 1,350,000.00	
2 Landscape Scope	quantity	unit	unit cost	sub-total	remarks
Tree Protection	1	allow	\$ 5,000.00	\$ 5,000.00	
Selective Pruning and Trimming	1	allow	\$ 5,000.00	\$ 5,000.00	
Fine Grading	1	allow	\$ 10,000.00	\$ 10,000.00	
Canopy Trees	19	ea	\$ 2,000.00	\$ 38,000.00	8" cal
Ornamental Trees	3	ea	\$ 1,000.00	\$ 3,000.00	
Planting Beds	23,447	sf	\$ 7.00	\$ 164,129.00	includes bed-prep, 4" compost, 2" mulch, planting
Sod Lawn	11,159	sf	\$ 1.00	\$ 11,159.00	solid-sod bermuda
Planting Bed Irrigation	23,447	sf	\$ 1.50	\$ 35,170.50	drip tubing
Lawn Irrigation	11,159	sf	\$ 1.00	\$ 11,159.00	pop-up sprays/rotors
<i>Landscape Sub-total</i>				\$ 282,617.50	
3 Civil Scope	quantity	unit	unit cost	sub-total	remarks
Grading	1	allow	\$ 30,000.00	\$ 30,000.00	
Sawcut Existing Street	1,200	lf	\$ 8.00	\$ 9,600.00	
Street Paving	8,000	sf	\$ 10.00	\$ 80,000.00	
Paving Remove and Replace for Utilities	5,000	sf	\$ 15.00	\$ 75,000.00	
18" Curb and Gutter	1,400	lof	\$ 12.00	\$ 16,800.00	
Street Sidewalks	7,200	sf	\$ 8.00	\$ 57,600.00	
Street Barrier Free Ramps	10	ea	\$ 1,250.00	\$ 12,500.00	
6" Sanitary (SDR-35-PVC)	58	lf	\$ 70.00	\$ 4,060.00	
Sanitary Manhole	1	ea	\$ 7,500.00	\$ 7,500.00	
3" Domestic Water (DR-18 PVC)	174	lf	\$ 35.00	\$ 6,090.00	
Tee Connection to Existing 8" Water	1	ea	\$ 4,500.00	\$ 4,500.00	
3" x 3" Tee	1	ea	\$ 2,500.00	\$ 2,500.00	
3" Meter and Vault	1	ea	\$ 30,000.00	\$ 30,000.00	
18" RCP Storm Sewer Pipe	285	lf	\$ 95.00	\$ 27,075.00	
Storm Sewer Manhole	1	ea	\$ 8,000.00	\$ 8,000.00	
Erosion Control	1,200	lf	\$ 3.00	\$ 3,600.00	
<i>Civil Sub-total</i>				\$ 374,825.00	
2 Hardscape Scope	quantity	unit	unit cost	sub-total	remarks
Memorial Structure	1	allow	\$ 500,000.00	\$ 500,000.00	
Memorial Structure Foundation, Signage, Lighting, Freight and Transport	1	allow	\$ 150,000.00	\$ 150,000.00	
Interactive Splashpad	1	allow	\$ 750,000.00	\$ 750,000.00	Includes equipment, plumbing, electrical, and installation
Canvas Shade Sails at Splashpad	1	allow	\$ 300,000.00	\$ 300,000.00	
Play Surfacing	5,000	sf	\$ 35.00	\$ 175,000.00	
Play Equipment	1	allow	\$ 500,000.00	\$ 500,000.00	
Basketball Court	1	allow	\$ 50,000.00	\$ 50,000.00	
Integral Color Concrete	30,800	sf	\$ 12.00	\$ 369,600.00	
20" ht CMU radial seatwall with veneer	200	lf	\$ 610.00	\$ 122,000.00	
Gateway Features	2	ea	\$ 10,000.00	\$ 20,000.00	
Metal Privacy Screen with Perforations	65	lf	\$ 500.00	\$ 32,500.00	
Signage and Wayfinding	1	allow	\$ 100,000.00	\$ 100,000.00	
Lighting	1	allow	\$ 150,000.00	\$ 150,000.00	
Site Furnishing	1	allow	\$ 100,000.00	\$ 100,000.00	
<i>Hardscape Sub-total</i>				\$ 3,319,100.00	
<i>Project Subtotal</i>			\$	5,326,542.50	
<i>Project Contingency</i>			\$	532,654.25	
<i>Project General Conditions</i>			\$	532,654.25	
<i>Project Grand Total</i>			\$	6,391,851.00	

### Civil Assumptions

- Balanced site
- No relocation of existing overhead franchise utilities
- No relocation of major on-site utilities
- No onsite demolition of structures
- Relocation of the existing exposed storm sewer line to be under the adjacent street

## B.1.

Civil quantities were based on rough utility services for the new building.

Civil quantities were taken in the area between the back of the street walks toward the street.

Demo of Pool Structures, buildings, and removal of existing play

### **Architectural Alternatives (Per Architexas)**

2 unisex restrooms/3 family restrooms/electrical room/storage/janitors closet - \$1,700,000

3 unisex restrooms/janitors closet/electrical room/storage - \$750,000

4 family restrooms/janitors closet/electrical room - \$825,000

### **Questions:**

1. Confirm number of desired restrooms (we recommend they include a janitor's closet)
2. Confirm if they need to be all family restrooms or a mix of family and unisex
3. Confirm if they would like on site storage and how large
4. Does the City have particular toilet accessories they prefer? Do they prefer automatic toilet accessories?
5. It looks like they went from three custom pavilions to two custom pavilions. There may be a cost savings with doing these as an off the shelf
6. The images appear that the style of the park is contemporary but their downtown is historic with more of a traditional style. Can we confirm what style they desire for the restroom building and pavilions?



## Tim Gauna Park

Ennis, TX

5/20/2024

### Opinion of Probable Cost

1 Civil Scope	quantity	unit	unit cost	sub-total
Grading	1	ls	\$ 30,000.00	\$ 30,000.00
Sawcut	780	lf	\$ 8.00	\$ 6,240.00
18" Curb and Gutter	937	lf	\$ 12.00	\$ 11,244.00
Detectable Warning Strips at Ramps	4	ea	\$ 5,000.00	\$ 20,000.00
6" PCC x/ 8" lime subgrade	532	sy	\$ 150.00	\$ 79,766.67
Paving in McKinney St	257	sf	\$ 10.00	\$ 2,570.00
8" Storm	100	lf	\$ 80.00	\$ 8,000.00
18" Storm RCP	148	lf	\$ 110.00	\$ 16,280.00
Storm Diverter	0	ea	\$ 5,000.00	\$ -
Curb Inlet	2	ea	\$ 5,400.00	\$ 10,800.00
6" PVC Sanitary Sewer	70	lf	\$ 75.00	\$ 5,250.00
4-FT Sanitary Sewer Manhole	1	ea	\$ 7,500.00	\$ 7,500.00
Electrical Line	275	lf	\$ 20.00	\$ 5,500.00
Erosion Control	1,200	lf	\$ 3.00	\$ 3,600.00
<i>Civil Sub-total</i>				\$ 206,750.67
2 Architectural Scope	quantity	unit	unit cost	sub-total
Building	1	lump sum	\$ 1,111,646.00	\$ 1,111,646.00
<i>Architectural Sub-total</i>				\$ 1,111,646.00
3 Softscape Scope	quantity	unit	unit cost	sub-total
Tree Protection	1	allow	\$ 5,000.00	\$ 5,000.00
Selective Pruning and Trimming	1	allow	\$ 5,000.00	\$ 5,000.00
Specimen Canopy Trees	6	ea	\$ 7,500.00	\$ 45,000.00
Large Canopy Trees	9	ea	\$ 3,000.00	\$ 27,000.00
Standard Canopy Trees	14	ea	\$ 1,000.00	\$ 14,000.00
Ornamental Trees	30	ea	\$ 750.00	\$ 22,500.00
Planting Beds	24,850	sf	\$ 8.50	\$ 211,225.00
Planting Bed Irrigation	24,850	sf	\$ 1.50	\$ 37,275.00
Sod Lawn	15,960	sf	\$ 1.00	\$ 15,960.00
Lawn Fine Grading	15,960	sf	\$ 0.25	\$ 3,990.00
Lawn Irrigation	15,960	sf	\$ 1.00	\$ 15,960.00
<i>Softscape Sub-total</i>				\$ 402,910.00
4 Hardscape Scope	quantity	unit	unit cost	sub-total
Fine Grading	1	lump sum	\$ 30,000.00	\$ 30,000.00
Drainage	1	lump sum	\$ 15,000.00	\$ 15,000.00
Interactive Splashpad	1	lump sum	\$ 505,500.00	\$ 505,500.00
Wood Deck	1,040	sf	\$ 45.00	\$ 46,800.00
Play Equipment	1	lump sum	\$ 244,735.00	\$ 244,735.00
Play Area PIP Surfacing	3,820	sf	\$ 23.95	\$ 91,489.00
Play Area Concrete Base	3,820	sf	\$ 7.00	\$ 26,740.00
Play surfacing excavation	1	allow	\$ 5,000.00	\$ 5,000.00
Play Area Sub Drainage	1	lump sum	\$ 7,500.00	\$ 7,500.00

Concrete curb at play surfacing	175	lf	\$	55.00	\$	9,625.00
Metal Bridge Crossings at Play	4	ea	\$	10,000.00	\$	40,000.00
Aggregate Surfacing (DG)	6,900	sf	\$	4.50	\$	31,050.00
Concrete curb for DG	820	lf	\$	18.00	\$	14,760.00
Sport Court	1	allow	\$	65,000.00	\$	65,000.00
Concrete Walks with Acid Etch	17,400	sf	\$	12.00	\$	208,800.00
Concrete subbase for pavers	2,475	sf	\$	7.00	\$	17,325.00
Logo at Corners	2	ea				
Signage and Wayfinding	1	ls	\$	121,000.00	\$	121,000.00
Site Lighting Fixtures	1	ls	\$	141,000.00	\$	141,000.00
Site Lighting / Electrical Install	1	ls	\$	290,000.00	\$	290,000.00
Site Light Pole Footings	31	ea	\$	1,500.00	\$	46,500.00
Cypress benches	22	ea	\$	4,600.00	\$	101,200.00
Concrete seat wall at globe sculpture	155	lf	\$	250.00	\$	38,750.00
Site Furnishings	1	allow	\$	-	\$	-
Limstone block seat walls	500	lf	\$	260.00	\$	130,000.00
Landscape Railing	615	lf	\$	35.00	\$	21,525.00
Radius Concrete Steps w/ Handrail	1	ls	\$	15,000.00	\$	15,000.00
Concrete Steps w/ Handrail	40	lf	\$	1,200.00	\$	48,000.00
<b>Hardscape Sub-total</b>					\$	2,312,299.00

Project Subtotal	\$	4,033,605.67
Project Contingency @ 5%	\$	201,680.28
Project General Conditions @ 8%	\$	322,688.45
Project GC Fee @ 6%	\$	242,016.34
<b>Grand Total Construction Contract</b>	<b>\$</b>	<b>4,799,990.74</b>

5 Owner Direct Contract Scope	quantity	unit	unit cost	sub-total
Art (Sculpture)	1	lump sum	\$ 523,000.00	\$ 523,000.00
Moveable Site Furnishings	1	allow	\$ 194,700.00	\$ 194,700.00
Note: Downtown Streetscape project City bought materials direct and contractor installed (bench, litter, bike rack, planter, bollard, street light pole)				
<b>Owner Direct Contract Sub-total</b>				\$ 717,700.00
<b>Park Project Grand Total</b>			<b>\$</b>	<b>5,517,690.74</b>

**VE Options**

Engineered wood fiber play surfacing ILO PIP	3,820	sf	\$	22.90	\$	(87,478.00)
Omit Concrete Base for PIP Surfacing	3,820	sf	\$	7.00	\$	(26,740.00)
Reduce site furnishings	1	ls	\$	50,000.00	\$	(50,000.00)
Reduce Cypress Bench qty	10	ea	\$	4,600.00	\$	(46,000.00)
Weeping Love Grass hydromulch ILO Planting	7,850	sf	\$	8.00	\$	(62,800.00)
Lawn ILO Planting	3,075	sf	\$	8.00	\$	(24,600.00)
Change 2 Specimen Canopy Trees to Standard Canopy Trees	2	ea	\$	6,500.00	\$	(13,000.00)
Reduce Ornamental Tree Qty	5	ea	\$	750.00	\$	(3,750.00)
Omit Limestone block seatwall at sport court	140	lf	\$	260.00	\$	(36,400.00)
Omit Limestone block seatwall along arcing walk	190	lf	\$	260.00	\$	(49,400.00)
Reduce lighting scope	1	ls	\$	12,000.00	\$	(12,000.00)
Reduce lighting scope	1	ls	\$	5,000.00	\$	(5,000.00)
Omit Wood Deck	1	ls	\$	46,800.00	\$	(46,800.00)
Omit Concrete Steps at Wood Deck	55	lf	\$	1,200.00	\$	(66,000.00)
Signage VE (powder coated aluminum cabinet ILO 1" thk steel)	1	ls	\$	24,200.00	\$	(24,200.00)
<b>VE Options Sub-total</b>					\$	(554,168.00)
<b>VE Park Project Grand Total</b>			<b>\$</b>		<b>\$</b>	<b>4,963,522.74</b>

6 Right of Way Street / Utility Improvements	quantity	unit	unit cost	sub-total
<b>Water</b>				
8" PVC WATER LINE	335	LF	\$ 98.00	\$ 32,830.00

B.1.

STEEL ENCASEMENT PIPE	20	LF	\$	200.00	\$	4,000.00
3" PVC LATERAL	105	LF	\$	35.00	\$	3,675.00
8" GATE VALVE	4	EA	\$	2,000.00	\$	8,000.00
4" GATE VALVE	2	EA	\$	1,196.00	\$	2,392.00
8"x8" TEE	1	EA	\$	4,500.00	\$	4,500.00
8"x4" TEE	1	EA	\$	4,000.00	\$	4,000.00
8"x3" TEE	1	EA	\$	3,500.00	\$	3,500.00
2" WATER METER	1	EA	\$	3,000.00	\$	3,000.00
8" 90 DEGREE BEND	1	EA	\$	1,500.00	\$	1,500.00
6" LIME TREATED SUBGRADE	88	SY	\$	18.00	\$	1,584.00
10" ASPHALT	88	SY	\$	100.00	\$	8,800.00

*Water Subtotal* **\$ 77,781.00**

**Street**

GRADING	1	ALLOW	\$	30,000.00	\$	15,000.00
SAWCUT EXISTING STREET	375	LF	\$	8.00	\$	3,000.00
REMOVE STREET PAVING	4,300	SF	\$	8.00	\$	34,400.00
STREET PAVING	4,300	SF	\$	15.00	\$	64,500.00
6" CURB AND GUTTER	96	LF	\$	12.00	\$	1,152.00
REMOVAL OF 60" RCP	45	LF	\$	10.00	\$	450.00

*Street Subtotal* **\$ 118,502.00**

**Storm**

24" RCP	205	LF	\$	128.00	\$	26,240.00
10' CURB INLET	4	EA	\$	5,411.00	\$	21,644.00
4' MANHOLE	1	EA	\$	6,848.00	\$	6,848.00
6' MANHOLE	1	EA	\$	2,500.00	\$	2,500.00
10" ASPHALT	29	SY	\$	100.00	\$	2,866.67
6" LIME TREATED SUBGRADE	29	SY	\$	18.00	\$	516.00

Alternate Extension to Crockett:

24" RCP	155	LF	\$	128.00	\$	19,840.00
4' MANHOLE	1	EA	\$	6,848.00	\$	6,848.00

*Storm Subtotal* **\$ 87,302.67**

*Right of Way Street / Utility Improvements Sub-total* **\$ 283,585.67**

<b>7 Downtown Streetscape Standards Premium</b>	quantity	unit		unit cost		sub-total
Pedestrian Pavers	2,475	sf	\$	13.00	\$	32,175.00
Vehicular Pavers	4,730	sf	\$	12.50	\$	59,125.00
City Green Strata Vault Street Tree System	12	ea	\$	7,500.00	\$	90,000.00
Bollards at Corners	24	ea	\$	1,600.00	\$	38,400.00
Planters at Corners	4	ea	\$	3,000.00	\$	12,000.00
Custom Streetlight Premium	24	ea	\$	6,000.00	\$	144,000.00

*Downtown Streetscape Standards Premium Sub-total* **\$ 375,700.00**

**Project Grand Total** **\$ 6,176,976.41**

**VE Project Grand Total** **\$ 5,622,808.41**



## Tim Gauna Park

Ennis, TX

11/21/2024

### Opinion of Probable Cost

1 Civil Scope	quantity	unit	unit cost	sub-total
Grading	1	allow	\$ 30,000.00	\$ 30,000.00
Sawcut Existing Street	1,000	lf	\$ 8.00	\$ 8,000.00
Concrete Street Paving	270	sy	\$ 65.00	\$ 17,550.00
Asphalt Street Paving	17	sy	\$ 65.00	\$ 1,083.33
Paver Band in sidewalk and street	2,320	sf	\$ 15.00	\$ 34,800.00
Paving Removal on Site	2,200	sy	\$ 5.00	\$ 11,000.00
18" Curb and Gutter	410	lf	\$ 12.00	\$ 4,920.00
Street Barrier Free Ramps	4	ea	\$ 3,500.00	\$ 31,600.00
6" Sanitary (SDR-35-PVC)	58	lf	\$ 70.00	\$ 4,060.00
Sanitary Manhole	1	ea	\$ 7,500.00	\$ 7,500.00
3" Domestic Water (DR-18 PVC)	255	lf	\$ 35.00	\$ 8,925.00
Tee Connection to Existing 8" Water	1	ea	\$ 4,500.00	\$ 4,500.00
3" x 3" Tee	1	ea	\$ 2,500.00	\$ 2,500.00
2" Meter in Handhole	1	ea	\$ 30,000.00	\$ 30,000.00
8" PVC Storm Sewer Pipe	95	lf	\$ 30.00	\$ 2,850.00
12" PVC Storm Sewer Pipe	135	lf	\$ 65.00	\$ 8,775.00
18" RCP Storm Sewer Pipe	15	lf	\$ 75.00	\$ 1,125.00
24" RCP Storm Sewer Pipe	115	lf	\$ 95.00	\$ 10,925.00
Landscape Drainage if needed	1	ea	\$ 25,000.00	\$ 25,000.00
Storm Sewer Manhole	1	ea	\$ 8,000.00	\$ 8,000.00
10-ft Curb Inlet	1	ea	\$ 4,000.00	\$ 4,000.00
Grate Inlet	2	ea	\$ 4,000.00	\$ 8,000.00
Erosion Control	1,200	lf	\$ 3.00	\$ 3,600.00
Electrical Service to Building from Milam Pole	275	lf	\$ 20.00	\$ 5,500.00
<i>Civil Sub-total</i>				\$ 274,213.33

2 Architectural Scope	quantity	unit	unit cost	sub-total
Building	1	allowance	\$ 500,000.00	\$ 500,000.00
<i>Architectural Sub-total</i>				\$ 500,000.00

3 Softscape Scope	quantity	unit	unit cost	sub-total
Tree Protection	1	allow	\$ 5,000.00	\$ 5,000.00
Selective Pruning and Trimming	1	allow	\$ 5,000.00	\$ 5,000.00
Specimen Canopy Trees	5	ea	\$ 7,500.00	\$ 37,500.00
Large Canopy Trees	7	ea	\$ 3,000.00	\$ 21,000.00
Standard Canopy Trees	14	ea	\$ 1,000.00	\$ 14,000.00
Ornamental Trees	24	ea	\$ 750.00	\$ 18,000.00
Planting Beds	19,120	sf	\$ 8.50	\$ 162,520.00
Planting Bed Irrigation	19,120	sf	\$ 2.00	\$ 38,240.00
Sod Lawn	28,645	sf	\$ 1.00	\$ 28,645.00
Lawn Fine Grading	28,645	sf	\$ 0.25	\$ 7,161.25
Lawn Irrigation	28,645	sf	\$ 1.50	\$ 42,967.50
<i>Softscape Sub-total</i>				\$ 380,033.75



4 Hardscape Scope		quantity	unit	unit cost		sub-total
Fine Grading	1	lump sum	\$	30,000.00	\$	30,000.00
Drainage	1	lump sum	\$	15,000.00	\$	15,000.00
Interactive Splashpad	1	lump sum	\$	250,000.00	\$	250,000.00
Play Equipment w/ PIP Surfacing	1	lump sum	\$	350,000.00	\$	350,000.00
Play Area Concrete Base	3,800	sf	\$	7.00	\$	26,600.00
Play surfacing excavation	1	allow	\$	5,000.00	\$	5,000.00
Play Area Sub Drainage	1	lump sum	\$	7,500.00	\$	7,500.00
Concrete curb at play surfacing	187	lf	\$	55.00	\$	10,285.00
Metal Bridge Crossings at Play	4	ea	\$	10,000.00	\$	40,000.00
Aggregate Surfacing (DG)	7,374	sf	\$	4.50	\$	33,183.00
Concrete curb for DG	973	lf	\$	18.00	\$	17,514.00
Sport Court	1	allow	\$	65,000.00	\$	65,000.00
Vehicular Pavers	2,803	sf	\$	12.50	\$	35,037.50
Concrete Walks with Acid Etch	15,075	sf	\$	12.00	\$	180,900.00
Pedestrian Pavers	4,000	sf	\$	13.00	\$	52,000.00
Concrete subbase for pavers	4,000	sf	\$	7.00	\$	28,000.00
Signage and Wayfinding	1	ls	\$	96,800.00	\$	96,800.00
Site Lighting Fixtures	1	ls	\$	75,000.00	\$	75,000.00
Site Lighting / Electrical Install	1	ls	\$	150,000.00	\$	150,000.00
Site Light Pole Footings	31	ea	\$	1,500.00	\$	46,500.00
Cypress benches	12	ea	\$	3,000.00	\$	36,000.00
Concrete base at globe sculpture	100	lf	\$	250.00	\$	25,000.00
Outdoor Game Tables	1	allow	\$	10,000.00	\$	10,000.00
Limstone block seat walls	250	lf	\$	260.00	\$	65,000.00
Landscape Railing	594	lf	\$	35.00	\$	20,790.00
Radius Concrete Steps w/ Handrail	1	ls	\$	15,000.00	\$	15,000.00
Concrete Steps w/ Handrail	56	lf	\$	1,200.00	\$	67,200.00
Bollards at Corners	24	ea	\$	1,600.00	\$	38,400.00
Planters at Corners	4	ea	\$	3,000.00	\$	12,000.00
<i>Hardscape Sub-total</i>						\$ 1,803,709.50
<i>Project Subtotal</i>						\$ 2,957,956.58
<i>Project Contingency @ 5%</i>						\$ 147,897.83
<i>Project General Conditions @ 8%</i>						\$ 236,636.53
<i>Project GC Fee @ 6%</i>						\$ 177,477.40
<b><i>Grand Total Construction Contract</i></b>						<b>\$ 3,519,968.33</b>
5 Owner Direct Contract Scope		quantity	unit	unit cost		sub-total
Art (Sculpture)	1	lump sum	\$	400,000.00	\$	400,000.00
Moveable Site Furnishings	1	allow	\$	100,000.00	\$	100,000.00
new City alt? Custom City CBD Std Streetlight	24	ea	\$	2,500.00	\$	60,000.00
Note: Downtown Streetscape project City bought materials direct and contractor installed (bench, litter, bike rack, planter, bollard, street light pole						
<i>Owner Direct Contract Sub-total</i>						\$ 560,000.00
<b><i>Park Project Grand Total</i></b>						<b>\$ 4,079,968.33</b>



03/17/25

**Daniel Ortiz-Hernandez, ICMA-CM**  
Assistant City Manager  
City of Ennis  
P.O. Box 220  
Ennis, TX 75120

**Proposal for Professional Design Services**

Client: City of Ennis  
Project: Tim Gauna Park  
Location: Ennis, TX

Garrison Jones, LLC (Garrison/Jones) is excited to submit Additional Services pursuant to your request for the above referenced Project.

This request is made based upon your request for the following services, which are not included in our original agreement dated June 29, 2023 (GJ Project Number: GJ23040). We require authorization of these requested additional services, prior to commencement of work.

As always, we appreciate the opportunity to work with you and your team to achieve your vision and ambitions for this exciting Project. Please feel free to reach out should you have any questions or need additional information.

Respectfully,

A handwritten signature in black ink, appearing to read 'Will Jones', is positioned above the printed name.

**Will Jones, PLA, ASLA**  
Principal, Co-founder

**1.0 Scope of Services**

The Scope of Additional Services requested herein includes:

**01\_** Project scope and program have changed from previously approved design development drawings. This will result in unanticipated changes that will need to be made by GJLA and subconsultant team to redevelop an abbreviated Design Development package that will fall within the City's outlined budget parameters.

**2.0 Compensation**

For the above-described additional Scope of Services, the client will be billed under Garrison/Jones Project Number: GJ23040), per the terms and conditions of our contract dated June 29, 2023.

Following is a contract summary, including this additional service request of #02:

Date	Description	Amount	Fee Basis
06/29/23	Original Contract	\$306,700	Lump Sum
12/21/23	Additional Service #01		Lump Sum
	01 Project Budget Increase	\$52,130	Lump Sum
	02a In-Control Water Systems	\$18,870	Lump Sum
	02b Brad Oldham Sculpture	\$5,000	Lump Sum
03/17/25	Additional Service #02		
	Architecture (Architexas)	\$7,000	Lump Sum
	Structural / Civil (RLG)	\$17,000	Lump Sum
	InControl (Waterfeature)	\$2,000	Lump Sum
	GJLA (Landscape Architecture)	\$42,000	Lump Sum
	Additional Service #02 Total	\$68,000	Lump Sum
	<b>Garrison/Jones Revised Contract Amount</b>	<b>\$450,700</b>	Lump Sum

This additional service agreement excludes taxes. All taxes required by law, regulation, and applicable tax authority are the sole responsibility of Client and are in addition to the fees.

In addition to the fees above, the Owner agrees to reimburse Garrison/Jones for all out-of-pocket expenses (i.e., postage, printing, computer plotting services, long distance telephone calls, courier services, handling and reproduction of drawings, travel, room and board, TDLR fees, etc.). Reimbursable shall be billed separately at cost plus 10% administrative fee.

We request your written authorization of the additional service #02 by executing and returning a copy of this request for our files. We will commence scope of work upon receipt of your approval. Please feel free to contact me if you have any questions regarding the scope and fee.

APPROVED and ACCEPTED on this 17 day of March 2025.



Will Jones, PLA, ASLA  
Principal, Co-founder

APPROVED and ACCEPTED on this \_\_\_\_\_ day of \_\_\_\_\_, 2025.

---

Daniel Ortiz-Hernandez, ICMA-CM  
Authorized Representative of City of Ennis



**RESOLUTION NO.**

**A RESOLUTION OF THE CITY COMMISSION OF THE CITY OF ENNIS, TEXAS, RATIFYING AND CONSOLIDATING PROFESSIONAL DESIGN SERVICES AGREEMENTS WITH GARRISON/JONES LANDSCAPE ARCHITECTS FOR THE TIM GAUNA PARK PROJECT; ACKNOWLEDGING PRIOR EXECUTION OF ADDITIONAL SERVICE #01; AUTHORIZING THE MAYOR TO EXECUTE A CONSOLIDATED AND RESTATED PROFESSIONAL SERVICES AGREEMENT; AND PROVIDING FOR AN EFFECTIVE DATE.**

**WHEREAS**, the City Commission of the City of Ennis approved the ActiveEnnis Parks Master Plan, which includes the redevelopment and revitalization of Tim Gauna Park, located in Downtown Ennis, Texas; and

**WHEREAS**, the City issued a formal Request for Qualifications (RFQ 23-101-10) for architectural and landscape architectural professional services for the Tim Gauna Park project, and Statements of Qualifications were evaluated and ranked in accordance with the Texas Professional Services Procurement Act (Texas Government Code Chapter 2254); and

**WHEREAS**, based on the RFQ evaluation, Garrison/Jones Landscape Architects was determined to be the most qualified firm and was selected to provide professional design services for the Tim Gauna Park project; and

**WHEREAS**, on June 20, 2023, the City Commission approved Resolution No. 23-0620-F4, authorizing execution of a professional services agreement with Garrison/Jones Landscape Architects for design services for Tim Gauna Park in an amount not to exceed \$306,700.00, plus allowable contingencies; and

**WHEREAS**, as the project progressed, additional professional services beyond the scope of the original agreement were identified as necessary to support project budget realignment, aquatic engineering design for the splash pad feature, and art consultant services associated with a conceptual globe sculpture; and

**WHEREAS**, these expanded services were documented in GJ23040 – Additional Service #01 Tim Gauna Park, dated December 21, 2023, and were executed by the City Manager on February 2, 2024, increasing the cumulative contract amount; and

**WHEREAS**, upon subsequent review of City Commission agendas, resolutions, and official minutes, no City Commission action authorizing or ratifying Additional Service #01 at the time of execution could be located; and

**WHEREAS**, the City Commission desires to ensure transparency, proper authorization, and alignment with municipal governance best practices by formally ratifying prior actions, consolidating the scope of services, and memorializing the full professional services agreement for the Tim Gauna Park project; and

**WHEREAS**, ratification of previously executed professional services performed in furtherance of an authorized public project is a recognized municipal practice to clarify legislative intent and cure procedural irregularities; and

**WHEREAS**, the City Commission finds that approval of a consolidated and restated professional services agreement with Garrison/Jones Landscape Architects is in the best interest of the City of Ennis and its residents;

**NOW, THEREFORE, BE IT ORDAINED BY THE CITY COMMISSION OF THE CITY OF ENNIS, TX:**

**SECTION 1:** The foregoing recitals are hereby found to be true and correct and are incorporated into this Resolution as legislative findings.

**SECTION 2:** The City Commission hereby ratifies and approves GJ23040 – Additional Service #01 Tim Gauna Park, executed on February 2, 2024, including the expanded scope of professional services and associated compensation described therein.

**SECTION 3:** The City Commission hereby authorizes the Mayor to execute a consolidated and restated professional services agreement with Garrison/Jones Landscape Architects for the Tim Gauna Park project. The agreement shall incorporate:

- The original professional services agreement approved on June 20, 2023;
- Additional Service #01; and
- Any other previously approved or concurrently approved amendments as identified in Exhibit “A”.

**SECTION 4:** Approval of this Resolution is intended to memorialize, ratify, and consolidate the professional services for the Tim Gauna Park project and does not authorize new scope or expenditures beyond those expressly identified in the consolidated agreement.

**SECTION 5:** The Mayor is further authorized to execute any ancillary documents necessary to effectuate the intent of this Resolution, subject to review and approval by the City Attorney.

**SECTION 6:** If any section, subsection, sentence, clause, or phrase of this Resolution is for any reason held to be invalid, such invalidity shall not affect the validity of the remaining portions of this Resolution.

**SECTION 7:** This Resolution shall take effect immediately upon its passage and approval.

**PASSED AND APPROVED** by the City Commission of the City of Ennis, Texas on this 19th day of December, 2025.

B.1.

---

KAMERON RABURN, Mayor

ATTEST:

---

ANGIE WADE, City Secretary

## ENNIS CITY COMMISSION AGENDA SUMMARY FORM



**To:** City Commission

**Subject:** Discuss and consider a Resolution approving a bid award to S-Co Incorporated for the Paris Street Waterline Relocation project and authorizing the Mayor to execute a contract in an amount not to exceed Three Hundred Thirty-Six Thousand Eight Hundred Seventeen Dollars and Zero Cents (\$336,817.00), and authorizing the City Manager or designee to execute any documents in connection therewith.

**Meeting:** ENNIS CITY COMMISSION - 19 Dec 2025

**Department:** Public Works

**Staff Contact:** Douglas Taylor, Utility Operations Director

### BACKGROUND INFORMATION:

In 2024, a utility conflict was identified near the downstream end of the proposed upsized drainage system serving the TxDOT BUS287 – Union Pacific Railroad (UPRR) Underpass Project. The existing 6" waterline crosses the 600 block of East Ennis Avenue just west of the Valvoline Express Care, where a proposed upsized storm drain line will serve the Underpass Project.

City staff presented the issue to the City Commission on December 3, 2024, requesting authorization to hire an engineer to prepare plans for the Paris Street Waterline Relocation. The Commission approved the request. Following completion of the engineer's drawings, the project was advertised for sealed bids in accordance with the plans. On December 15, 2025, three bids were submitted through the OpenGov Procurement Portal. After evaluation, City staff recommend awarding the project to S-Co Incorporated, the lowest responsive bidder.

The project scope generally includes grouting 100 LF of the existing waterline in place with flowable fill, removal of all valves, fire hydrants, and other water appurtenances; the installation of 490 LF 8" C-900 DR 18 PC 235 PVC water main; connection of new water line to water system; and pavement repairs.

### FINANCIAL IMPACT:

Funding for the construction of the Paris Street Waterline Relocation Project is included in the Water Capital Projects Fund, with payments to be made in accordance with Exhibit A.

### POLICY IMPLICATIONS:

Approval of this item complies with the City's purchasing policies and applicable state law.

### RECOMMENDATION:

Staff recommends approval of this item.

### ATTACHMENTS:



B.2.

[RESOLUTION NO.-Paris Street Waterline Relocation Award to S-Co Incorporated. - Pdf](#)  
[S-Co Incorporated Contract 20251215](#)  
[Paris Street Waterline Relocation Project Bid Tab 20251215](#)



**RESOLUTION NO.**

**A RESOLUTION APPROVING A BID AWARD TO S-CO INCORPORATED FOR THE PARIS STREET WATERLINE RELOCATION PROJECT AND AUTHORIZING THE MAYOR TO EXECUTE A CONTRACT IN AN AMOUNT NOT TO EXCEED THREE HUNDRED THIRTY-SIX THOUSAND EIGHT HUNDRED SEVENTEEN DOLLARS AND ZERO CENTS (\$336,817.00), AND AUTHORIZING THE CITY MANAGER OR DESIGNEE TO EXECUTE ANY DOCUMENTS IN CONNECTION THEREWITH.**

**WHEREAS**, S-Co Incorporated is the lowest responsible bidder and will provide adequate bonds and insurance to construct the project and will have access to adequate equipment, manpower, and experienced supervision to construct the project; and

**WHEREAS**, the City Commission wishes to protect its assets and citizens with these necessary improvements to the water collection system; and

**WHEREAS**, this Agreement is for completing the construction phase of the Paris Street Waterline Relocation project to deconflict the existing 6" waterline and proposed upsized drainage system serving the TxDOT BUS287 – Union Pacific Railroad (UPRR) Underpass Project as proposed in Exhibit A.

**NOW, THEREFORE, BE IT RESOLVED BY THE CITY COMMISSION OF THE CITY OF ENNIS, TEXAS:**

**SECTION 1:** That the foregoing recitals are hereby found to be true and correct legislative findings of the City of Ennis, Texas, and are fully incorporated into the body of this Resolution.

**SECTION 2:** Authorizes the City of Ennis to proceed with the Interlocal Agreement with Trinity River Authority on the County-Wide Water Resource Study.

**SECTION 3:** It is hereby declared to be the intention of the City Commission that the phrases, clauses, sentences, paragraphs and sections of this Resolution are severable, and if any phrase, clause, sentence, paragraph or section of this Resolution shall be

declared unconstitutional by the valid judgment or decree of any court of competent jurisdiction, such unconstitutionality shall not affect any of the remaining phrases, clauses, sentences, paragraphs and sections of this Resolution, since the same would have been enacted by the City Commission without the incorporation of this Resolution of any such unconstitutional phrase, clause, sentence, paragraph or section.

**SECTION 4:** That this Resolution shall become effective from and after its passage.

**PASSED AND APPROVED BY THE CITY COMMISSION OF THE CITY OF ENNIS, TEXAS, on this 19th day of December 2025.-**

---

KAMERON RABURN, Mayor

ATTEST:

---

ANGIE WADE, City Secretary

# S-Co Incorporated Response

*Pricing unsealed at Dec 15, 2025 2:02 PM*

**CONTACT INFORMATION**

Company

S-Co Incorporated

Email

m.watson@scoinc.net

Contact

Matthew Watson

Address

2329 county road 348  
Jewett, TX 75846

Phone

(979) 220-1933

Website

N/A

Submission Date

Dec 15, 2025 1:31 PM (Central Time)

**ADDENDA CONFIRMATION**

☒ Addendum #1

*Confirmed Dec 15, 2025 1:12 PM by Matthew Watson*

## QUESTIONNAIRE

---

### 1. References\*

☐ Pass ☐ Fail

Proposer shall provide **four (4)** references where Proposer has performed similar to or the same types of services as described within this RFP. Proposer shall include the following with each individual reference:

- Client/Company Name
- Contact Name at Client/Company
- Title of Contact
- Phone Number of Contact
- Email Address of Contact
- Date of Work/Service(s) Provided
- Scope of Work/Service(s) Provided

**S-Co Incorporated**

**New and Rehab Utilities, Boring, and Directional Drilling**

**2329 County Road 348**

**Jewett, Texas 75846**

### STATEMENT OF EXPERIENCE AND REFERENCES

**Name of Contractor: S-Co Incorporated**

**Contractor's type of work:** Boring and Underground Utilities

**Permanent Address:** 2329 County Road 348, Jewett, TX 75846

**Phone Number:** (903) 390-6733

**Number of years in business under current company name:** 8 Years

### **Project No. 1**

**Name of Project:** Post Oak Savannah Grant-County Road 304-8" Waterline

**Owner:** SW Milam Water Supply Corporation

**Location:** Milam County, TX

**Owners Point of Contact:** David Withrich **Phone No.:** (512) 743-3422

**Contract Price:** \$201,034.00

**Contract Dates:** October 2022 through January 2023

**Project Details:** S-Co was contracted to install approximately 3,400 linear feet of 8-inch PVC waterline including valves, fire hydrants, and services as called out on plans and specifications.

### **Project No. 2**

**Name of Project:** Post Oak Savannah Grant-Praesel Addition Phase 3-Waterline

**Owner:** SW Milam Water Supply Corporation

**Location:** Milam County, TX

**Owners Point of Contact:** David Wuthrich **Phone No.:** (512) 743-3422

**Contract Price:** \$184,445.00

**Contract Dates:** January 2022 through March 2022

**Project Details:** S-Co was contracted to install approximately 3,628 linear feet of 4-inch and 6-inch PVC waterline including valves, fire hydrants, and services as called out on plans and specifications.

### **Project No. 3**

**Name of Project:** Various Projects throughout Leon County and the Concord Water System

**Owner:** Concord Robbins Water Supply Corporation

**Location:** Throughout Leon County and the Concord Water System

**Owner's Point of Contact:** Travis Treadway **Phone no.:** (903) 208-1245

**Contract Price:** \$1,500.00 to \$50,000

**Project Details:** Installation of 3-inch and 4-inch waterlines to serve various subdivisions including directional boring for creek crossings and services for creek crossings and services.

#### **Project No. 4**

**Name of Project:** Kipling Oaks Section 1&2 Interconnect

**Owner:** HMW Special Utility District

**Location:** Montgomery County, TX

**Owner's Point of Contact: Phone no.:** (303) 854-4546

**Contract Price:** \$136,689.00

**Contract Dates:** May 2022 through July 2022

**Project Details:** S-Co was contracted to install approximately 2,705 linear feet of 6-inch PVC waterline by both open cut and directional boring as called out on plans and specifications along with various appurtenances

#### **Project No. 5**

**Name of Project:** Wylie WTP 1 Washwater Supply Tank Improvements (bores)

**Owner:** North Texas Municipal Water District (NTMWD)

**General Contractor:** Schofield Construction

**Location:** Collin County, TX

**Owner's Point of Contact:** Jonah Poppe **Phone no.:** (303) 854-4546

**Contract Price:** \$141,320.00

**Contract Dates:** July 1, 2022 through August 30, 2022

**Project Details:** S-Co was contracted to auger (dry bore) both a 48-inch diameter X 80 LF and a

42-inch diameter X 90 LF.

#### **Project No. 6**

**Name of Project:** City of Pilot Point Rural Watermain Extension (Bores)

**Owner:** City of Pilot Point

**General Contractor:** Vessels Construction

**Location:** Denton County, TX

**Owner's Point of Contact:** Bill Vessels **Phone no.:** (903) 821-6060

**Contract Price:** \$143,545.00

**Contract Dates:** April 2022 through October 2022

**Project Details:** S-Co was contracted to directional bore approximately 2,230 linear feet of various diameters and lengths. Auger bored an 18-inc X 115 linear foot bore under a Union Pacific Railroad.

#### **Project No. 7**

**Name of Project:** East Fork SUD Liberty Grove Waterline Improvements

**Owner:** East Fork Special Utility District

**Location:** Collin, Dallas and Rockwall County, TX

**Owner's Point of Contact:** James Hammes **Phone no.:** (214) 325-1192

**Contract Price:** \$135,155.74

**Contract Dates:** February 2023 through April 2023

Project Details: S-Co was contracted to directional bore approximately 1,100 linear feet of 8" HDPE.

#### **Project No. 8**

**Name of Project:** FM 2276 Water Main Extension (UT21-01)



**Owner:** City of Kilgore

**Location:** Gregg and Rusk County, Texas

**Owner's Point of Contact:** Patricia White **Phone no.:** (903) 988-4113

**Contract Price:** \$134,533.00

**Project Details:** S-Co was contracted to directional bore approximately 1,200 linear feet of 10" water main and directional bore under driveways and gas lines while utilizing auger boring for highway crossings.

### **Project No. 9**

**Name of Project:** DWSRF Water Distribution System Improvements Phase I

**Owner:** City of Rockdale

**Location:** Rockdale, TX

**Owner's Point of Contact:** Jerald Brunson **Phone no.:** (512) 446-2511

**Contract Price:** \$1,716,986.54

**Project Details:** S-Co was contracted to install 9,545 linear feet of water line by open cut, 1,305 linear feet by directional bore, and remove 4,534 linear feet of existing asbestos cement water line.

### **Project No. 10**

**Name of Project:** New Sewer Line & Force Main Replacement for Abbott I.S.D.

**Owner:** City of Abbott

**Location:** Abbott, TX

**Owner's Point of Contact:** Johnny Tabor **Phone no.:** (254) 756-2118

**Contract Price:** \$194,249.14

**Project Details:** S-Co was contracted to replace 435 linear feet of 4" force main and 490 linear feet of 8" sewer line as well as replace a manhole. In response to extenuating circumstances, S-Co completed this work in under 45 days to prevent complications with related work being completed by other contractors.

**Project No. 11****Name of Project:** Emergency Water Line Bore**Owner:** City of Azle**Location:** Azle, TX**Owner's Point of Contact:** Brad Geary **Phone no.:** (817) 752-2685**Contract Price:**\$117,262.00**Project Details:** S-Co was contracted to complete a 422 linear foot water line bore under a TxDOT highway to facilitate the emergency installation of an 8" water line for the city of Azle.**Project No. 12****Name of Project:** Granger Water System Improvements Phase I & 2**Owner:** City of Granger**Location:** Granger, TX**Owner's Point of Contact:** Ryan Wolf **Phone no.:** (512) 931-9388**Contract Price:**\$1,473,563.00**Project Details:** S-Co was contracted to install 4,226 linear feet of water Line for the city of Granger including a 290 linear foot bore underneath 2 UPRR train tracks.

---

**2. Contract Release\***☒ Pass ☐ Fail

In the past 5 years have you ever been released from a contract with or without cause? If so please provide the company's name, project name and a good contact number for the project lead.

No

---

**3. Texas Resident Certification\***☒ Pass ☐ Fail

In accordance with Texas Government Code Chapter 2252, Subchapter A, the City of [Your City Name] is required to give preference to Texas Resident Proposers. This preference applies to the extent that a Texas Resident Proposer would need to underbid a Nonresident Proposer to obtain a comparable contract in the state where the Nonresident's principal place of business is located.

To comply with this requirement, all Proposers must certify whether they are a Texas Resident Proposer or a Nonresident Proposer. Failure to provide this certification on the provided response forms will result in disqualification of the Proposal.

The Proposer certifies that their principal place of business is located within the State of Texas.

---

**4. Trade Secrets and/or Confidential Information\***☒ Pass ☐ Fail

Does your proposal contain trade secrets and/or confidential information?

No

---

**5. Bond Requirement\***☐ Pass ☐ Fail

A Bidder's Bond, Certified or Cashier's Check in an amount not less than (5%) of the total bid shall accompany each bid as a guarantee that, if awarded the contract, the bidder will promptly enter into contract with the City of Ennis, Texas. Please upload a copy here.

 [Bid\\_Bond.pdf](#)

---

**6. VERIFICATION REGARDING ENERGY COMPANY BOYCOTTS\***☐ Pass ☐ Fail

To the extent this Agreement constitutes a contract for goods or services for which a written verification is required under Section 2274.002, Texas Government Code, as amended, Consultant hereby verifies that it and its parent company, wholly- or majority- owned subsidiaries, and other affiliates, if any, do not boycott energy companies and, will not boycott energy companies during the term of this Contract. The foregoing verification is made solely to comply with Section 2274.002, Texas Government Code, as amended, to the extent Section 2274.002, Texas Government Code does not contravene applicable Texas or federal law. As used in the foregoing verification, "boycott energy companies" shall have the meaning assigned to the term "boycott energy company" in Section 809.001, Texas Government Code. Consultant understands "affiliate" to mean an entity that controls, is controlled by, or is under common control with the Underwriter and exists to make a profit.

☒ Confirmed

---

**7. VERIFICATION REGARDING DISCRIMINATION AGAINST FIREARM ENTITY OR TRADE ASSOCIATION\***☐ Pass ☐ Fail

To the extent this Agreement constitutes a contract for the purchase of goods or services having a value of at least \$100,000 that is paid wholly or partly from public funds for which a written verification is required under Section 2274.002, Texas Government Code, as amended, Consultant hereby verifies that it and its parent company, wholly- or majority- owned subsidiaries, and other affiliates, if any,

1. do not have a practice, policy, guidance or directive that discriminates against a firearm entity or firearm trade association; and
2. will not discriminate during the term of this Agreement against a firearm entity or firearm trade association.

The foregoing verification is made solely to comply with Section 2274.002, Texas Government Code, as amended, to the extent Section 2274.002, Texas Government Code does not contravene applicable Texas or federal law. As used in the foregoing verification, “discriminate against a firearm entity or firearm trade association” shall have the meaning assigned to such term in Section 2274.001(3), Texas Government Code. Consultant understands “affiliate” to mean an entity that controls, is controlled by, or is under common control with the Underwriter and exists to make a profit.

☒ Confirmed

---

#### 8. CERTIFICATIONS REGARDING TERRORIST ORGANIZATIONS AND BOYCOTT OF ISRAEL\*

☐ Pass ☐ Fail

To the extent this Agreement constitutes a contract for goods or services for which a written verification is required under Sections 2252.151-.154 Texas Government Code, Consultant hereby certifies that it and its parent company, wholly- or majority- owned subsidiaries, and other affiliates, if any, is not a company identified on the Texas Comptroller’s list of companies known to have contracts with, or provide supplies or services to, a foreign organization designated as a Foreign Terrorist Organization by the U.S. Secretary of State under federal law.

To the extent this Agreement constitutes a contract for goods or services for which a written verification is required under Sections 2271.001-002 Texas Government Code, Consultant and its parent company, wholly- or majority- owned subsidiaries, and other affiliates, if any, further certifies and verifies that it does not boycott Israel, and agrees that it will not boycott Israel during the term of this Contract. For purposes of this Contract, the term “boycott” shall mean and include terminating business activities or otherwise taking any action that is intended to penalize, inflict economic harm on, or limit commercial relations with Israel, or with a person or entity doing business in Israel or in an Israeli-controlled territory. (Tex. Gov’t Code §§ 2270.001-.002, 808.001-.006, .051-.057, .101-.102)

The foregoing certification is made solely to comply with Chapter 2271, Texas Government Code, as amended, to the extent the applicable provision in Chapter 2271.001, Texas Government Code does not contravene applicable Texas or federal law. As used in the foregoing verification, “boycott Israel” shall have the meaning assigned to such term in Section 808.001(1), Texas Government Code. Consultant understands “affiliate” to mean an entity that controls, is controlled by, or is under common control with the Underwriter and exists to make a profit.

☒ Confirmed

---

#### 9. CERTIFICATION REGARDING CRITICAL INFRASTRUCTURE\*

☐ Pass ☐ Fail

Consultant hereby certifies that it will not be granted direct or remote access to, or control of, critical infrastructure, as defined by Section 2275.0101(2), Texas Government Code, in this State, excluding access specifically allowed by the governmental entity for product warranty and support purposes; and is not owned by or the majority of stocks or other ownership interest of the company is held or controlled by: (i) individuals who are citizens of China, Iran, North Korea, Russia or a designated country; or (ii) a company or other entity, including a government entity, that is owned or controlled by citizens of or is directly controlled by the government of China, Iran, North Korea, Russia or a designated country; or headquartered in China, Iran, North Korea, Russia or a designated country. Regardless of whether the company’s or its parent company’s securities are publicly traded; or the company or its parent company is

listed on the New York Stock Exchange as: a Chinese, Iranian, North Korean or Russian company; or a company of a designated country. “Cybersecurity” means” the measures taken to protect a computer, computer network, computer system, or other technology infrastructure against unauthorized use or access, as defined in Section 2275.010(3).


The foregoing certification is made solely to comply with Chapter 2275, Texas Government Code, as amended.

☒ Confirmed

10. Form CIQ\*

☐ Pass ☐ Fail

Please download the below documents, complete, and upload.


 [Form CIQ.pdf](#)

 [CIQ.pdf](#)

11. Form 1295 Certification\*

☐ Pass ☐ Fail

Please provide documentation showing that you have submitted Form 1295 with the Texas Ethics Commission.

 [1295.pdf](#)

12. Bidder Authorization\*

☐ Pass ☐ Fail

Bidder confirms that the individual submitting this Bid is duly authorized to execute it in its entirety and, upon award by the City of Ennis, agrees that the Bid and all incorporated terms and conditions shall constitute a binding contract between the Bidder and the City.

☒ Confirmed

PRICE TABLES

Line Item	Description	Quantity	Unit of Measure	Unit Cost	Total

1	CONTRACTOR MOBILIZATION, BONDS AND INSURANCE ALL IN ACCORDANCE WITH THE PLANS & SPECS, THE SUM OF	1	LS	\$15,500.00	\$15,500.00
2	TRAFFIC CONTROL PLANNING AND ACTIVITIES, INCLUDING PROVIDING AND IMPLEMENTING OVERALL TRAFFIC CONTROL PLAN, COORDINATION AND SCHEDULING, IN ACCORDANCE WITH PLANS, SPECS, TXDOT PERMITTING, AND TMUTCD, THE SUM OF	1	LS	\$8,690.00	\$8,690.00
3	OSHA COMPLIANT TRENCH SAFETY SYSTEM AS REQUIRED THROUGHOUT PROJECT COMPLETE IN PLACE AS PER PLANS AND SPECIFICATIONS, THE SUM OF	1	LS	\$1,950.00	\$1,950.00
4	CONSTRUCTION STAKING INCLUDING LOCATION, CONFIRMATION, AND TIE-IN OF PRE- ESTABLISHED BENCHMARKS, PROPERTY LINES, EASEMENTS, AND RIGHT OF WAYS, AS DESCRIBED IN PLANS, THE SUM OF	1	LS	\$7,150.00	\$7,150.00

5	EROSION CONTROL INCLUDING SWP3 SUBMISSION OF NOI AND NOT, INSTALLATION, INSPECTION, AND MAINTENANCE OF CONTROLS, AND SWP3 DOCUMENTATION THE SUM OF	1	LS	\$3,835.00	\$3,835.00
6	PRE-CONSTRUCTION LOCATION & CONFIRMATION OF EXISTING UTILITIES INCLUDING COORDINATION WITH TEXAS 811, FRANCHISE UTILITY COMPANIES, AND THE CITY OF ENNIS, LOCATION AND VERFICATION OF EXACT DEPTH, LOCATION, SIZE, AND MATERIALS OF ALL UTILITIES PRIOR TO COMMENCING CONSTRUCTION ACTIVITIES, ALL EQUIPMENT, MATERIALS, LABOR & SUPERINTENDENCE, ALL IN ACCORDANCE WITH THE PLANS & SPECS, THE SUM OF	1	LS	\$1,985.00	\$1,985.00

7	CLEARING AND GRUBBING, ALL EQUIPMENT, MATERIALS, LABOR & SUPERINTENDENCE, ALL IN ACCORDANCE WITH THE PLANS & SPECS, THE SUM OF	50	SY	\$40.00	\$2,000.00
8	8" Ø AWWA C-900 DR 18 PC 235 PVC WATER MAIN, OPEN CUT, FURNISHED & INSTALLED, COMPLETE IN PLACE, READY FOR SERVICE, INCLUDING ALL FITTINGS, EQUIPMENT, INCIDENTALS, THRUST BLOCKING, BACKFILLING, SURFACE RESTORATION, ALL MATERIALS, LABOR & SUPERINTENDENCE, AND TESTING ALL IN ACCORDANCE WITH THE PLANS & SPECS, THE SUM OF	490	LF	\$174.00	\$85,260.00
9	8" GATE VALVE ASSEMBLY WITH RISER, FURNISHED & INSTALLED, COMPLETE IN PLACE, READY FOR SERVICE, TO INCLUDE EQUIPMENT, INCIDENTALS, ALL MATERIALS, LABOR & SUPERINTENDENCE, AND TESTING IN ACCORDANCE WITH THE PLANS & SPECS, THE SUM OF	5	EA	\$4,378.00	\$21,890.00



10	2" GATE VALVE ASSEMBLY WITH RISER, FURNISHED & INSTALLED, COMPLETE IN PLACE, READY FOR SERVICE, TO INCLUDE EQUIPMENT, INCIDENTALS, ALL MATERIALS, LABOR & SUPERINTENDENCE, AND TESTING IN ACCORDANCE WITH THE PLANS & SPECS, THE SUM OF	2	EA	\$1,730.00	\$3,460.00
11	INTERCONNECTION OF WATERLINE TO EXISTING WATERLINE, COMPLETE IN PLACE, READY FOR SERVICE, INCLUDING SCHEDULING AND NOTIFICATIONS FOR SHUTDOWNS, ALL FITTINGS, EQUIPMENT, INCIDENTALS, THRUST BLOCKING, BACKFILLING, TESTING, SURFACE RESTORATION, ALL MATERIALS, LABOR & SUPERINTENDENCE, AND TESTING ALL IN ACCORDANCE WITH THE PLANS & SPECS, THE SUM OF	2	EA	\$4,000.00	\$8,000.00

12	REPAIR OF CONCRETE PAVEMENT - PARKING LOT, FURNISHED & INSTALLED, COMPLETE IN PLACE, READY FOR SERVICE, INCLUDING FULL DEPTH SAW CUT EDGES, COMPACTION OF SUBGRADE, MIN. 8" DEPTH OF REINFORCED CONCRETE, ALL EQUIPMENT, INCIDENTALS, MATERIALS, LABOR & SUPERINTENDENCE, AND TESTING ALL IN ACCORDANCE WITH THE PLANS & SPECS, THE SUM OF	75	SY	\$227.00	\$17,025.00
13	REPAIR OF INTEGRAL CURB AND GUTTER, FURNISHED & INSTALLED, COMPLETE IN PLACE, READY FOR SERVICE, INCLUDING FULL DEPTH SAW CUT EDGES, COMPACTION OF SUBGRADE, REINFORCED CONCRETE, ALL EQUIPMENT, INCIDENTALS, MATERIALS, LABOR & SUPERINTENDENCE, AND TESTING ALL IN ACCORDANCE WITH THE PLANS & SPECS, THE SUM OF	120	LF	\$69.00	\$8,280.00

14	REPAIR OF CONCRETE PAVEMENT - DRIVE, FURNISHED & INSTALLED, COMPLETE IN PLACE, READY FOR SERVICE, INCLUDING FULL DEPTH SAW CUT EDGES, COMPACTION OF SUBGRADE, MIN. 8" DEPTH OF REINFORCED CONCRETE, ALL EQUIPMENT, INCIDENTALS, MATERIALS, LABOR & SUPERINTENDENCE, AND TESTING ALL IN ACCORDANCE WITH THE PLANS & SPECS, THE SUM OF	15	SY	\$266.00	\$3,990.00
15	REPAIR OF CONCRETE PAVEMENT - SIDEWALK, FURNISHED & INSTALLED, COMPLETE IN PLACE, READY FOR SERVICE, INCLUDING FULL DEPTH SAW CUT EDGES, COMPACTION OF SUBGRADE, MIN. 4" DEPTH OF REINFORCED CONCRETE, ALL EQUIPMENT, INCIDENTALS, MATERIALS, LABOR & SUPERINTENDENCE, AND TESTING ALL IN ACCORDANCE WITH THE PLANS & SPECS, THE SUM OF	70	SY	\$125.00	\$8,750.00

16	REPAIR OF HMAC PAVEMENT, FURNISHED & INSTALLED, COMPLETE IN PLACE, READY FOR SERVICE, INCLUDING FULL DEPTH SAW CUT EDGES, COMPACTION OF SUBGRADE, 6" FLEXIBLE BASE, 2" HMAC , PRIME/'TACK COATS, ALL EQUIPMENT, INCIDENTALS, MATERIALS, LABOR & SUPERINTENDENCE, AND TESTING ALL IN ACCORDANCE WITH THE PLANS & SPECS, THE SUM OF	10	SY	\$685.00	\$6,850.00
17	REMOVE AND REPLACE FIRE HYDRANT ASSEMBLY, COMPLETE IN PLACE, READY FOR SERVICE, INCLUDING GATE VALVE, ALL FITTINGS, EQUIPMENT, INCIDENTALS, THRUST BLOCKING, BACKFILLING, TESTING, SURFACE RESTORATION, ALL MATERIALS, LABOR & SUPERINTENDENCE, AND TESTING ALL IN ACCORDANCE WITH THE PLANS & SPECS, THE SUM OF	1	EA	\$9,388.00	\$9,388.00

18	RECONNECT EXISTING SERVICES TO NEW 8" WATERLINE, COMPLETE IN PLACE, READY FOR SERVICE, ALL FITTINGS, EQUIPMENT, INCIDENTALS, THRUST BLOCKING, BACKFILLING, TESTING, SURFACE RESTORATION, ALL MATERIALS, LABOR & SUPERINTENDENCE, AND TESTING ALL IN ACCORDANCE WITH THE PLANS & SPECS, THE SUM OF	3	EA	\$3,540.00	\$10,620.00
19	CORE NEW WATERLINE THROUGH EXISTING CONCRETE CHANNEL, COMPLETE IN PLACE, READY FOR SERVICE, TESTING, SURFACE RESTORATION, ALL MATERIALS, LABOR & SUPERINTENDENCE, AND TESTING ALL IN ACCORDANCE WITH THE PLANS & SPECS, THE SUM OF	1	LS	\$12,085.00	\$12,085.00

20	14" OPEN CUT STEEL CASING, COMPLETE IN PLACE, READY FOR SERVICE, TESTING, SURFACE RESTORATION, ALL MATERIALS, LABOR & SUPERINTENDENCE, AND TESTING ALL IN ACCORDANCE WITH THE PLANS & SPECS, THE SUM OF	100	LF	\$156.00	\$15,600.00
21	CONCRETE RIP-RAP, FURNISHED & INSTALLED, COMPLETE IN PLACE, READY FOR SERVICE, INCLUDING FULL DEPTH SAW CUT EDGES, COMPACTION OF SUBGRADE, MIN. 4" DEPTH OF REINFORCED CONCRETE, ALL EQUIPMENT, INCIDENTALS, MATERIALS, LABOR & SUPERINTENDENCE, AND TESTING ALL IN ACCORDANCE WITH THE PLANS & SPECS, THE SUM OF	50	SY	\$154.00	\$7,700.00

22	LOCATE, REMOVE, AND REPLACE EXISTING 1" IRRIGATION LINE, COMPLETE IN PLACE, READY FOR SERVICE, TESTING, SURFACE RESTORATION, ALL MATERIALS, LABOR & SUPERINTENDENCE, AND TESTING ALL IN ACCORDANCE WITH THE PLANS & SPECS, THE SUM OF	280	LF	\$11.00	\$3,080.00
23	LOCATE, REMOVE, AND REPLACE EXISTING IRRIGATION SPRINKLER HEAD, COMPLETE IN PLACE, READY FOR SERVICE, TESTING, SURFACE RESTORATION, ALL MATERIALS, LABOR & SUPERINTENDENCE, AND TESTING ALL IN ACCORDANCE WITH THE PLANS & SPECS, THE SUM OF	24	EA	\$291.00	\$6,984.00
24	LOCATE, REMOVE, AND REPLACE EXISTING 2" IRRIGATION LINE, COMPLETE IN PLACE, READY FOR SERVICE, TESTING, SURFACE RESTORATION, ALL MATERIALS, LABOR & SUPERINTENDENCE, AND TESTING ALL IN ACCORDANCE WITH THE PLANS & SPECS, THE SUM OF	50	LF	\$18.00	\$900.00

25	LOCATE, REMOVE, AND REPLACE EXISTING IRRIGATION CONTROL VALVE, COMPLETE IN PLACE, READY FOR SERVICE, TESTING, SURFACE RESTORATION, ALL MATERIALS, LABOR & SUPERINTENDENCE, AND TESTING ALL IN ACCORDANCE WITH THE PLANS & SPECS, THE SUM OF	1	EA	\$1,209.00	\$1,209.00
26	EXISTING WATERLINE TO BE GROUTED IN PLACE BENEATH PAVEMENT WITH FLOWABLE FILL, REMOVAL OF ALL VALVES, FIRE HYDRANTS, AND ANY OTHER EXISTING WATER APPURTENANCES, ALL PER TXDOT SPECIFICATOINS, ALL EQUIPMENT, INCIDENTALS, MATERIALS, LABOR & SUPERINTENDENCE, ALL IN ACCORDANCE WITH THE PLANS & SPECS, THE SUM OF	100	LF	\$27.00	\$2,700.00
27	REMOVE AND REPLACE MANHOLE RING AND COVER, ALL EQUIPMENT, MATERIALS, LABOR & SUPERINTENDENCE, ALL IN ACCORDANCE WITH THE PLANS & SPECS, THE SUM OF	1	EA	\$1,936.00	\$1,936.00



<b>Total</b>	<b>\$276,817.00</b>
--------------	---------------------

Line Item	Description	Quantity	Unit of Measure	Unit Cost	Total
28	OWNER'S ALLOWANCE FOR MATERIALS TESTING. CONTRACTOR SHALL PAY ALL NECESSARY LAB FEES TO BE REIMBURSED THROUGH THIS BID ITEM. ONLY DIRECT INVOICES FROM THE LAB WILL BE REIMBURSED, THE SUM OF	1	LS	\$10,000.00	\$10,000.00
29	OWNER'S ALLOWANCE FOR FIELD CHANGES - TO BE DISBURSED ONLY WITH SPECIFIC WRITTEN APPROVAL OF OWNER, THE SUM OF	1	LS	\$50,000.00	\$50,000.00
<b>Total</b>					<b>\$60,000.00</b>

Line Item	Description	Quantity	Unit of Measure	J&L Construction,LLC		Pennington Concrete & Utilities, LLC.		S-Co Incorporated	
				Unit Cost	Total	Unit Cost	Total	Unit Cost	Total
1	CONTRACTOR MOBILIZATION, BONDS AND INSURANCE ALL IN ACCORDANCE WITH THE PLANS & SPECS, THE SUM OF	1	LS	\$19,217.03	\$19,217.03	\$16,000.00	\$16,000.00	\$15,500.00	\$15,500.00
2	TRAFFIC CONTROL PLANNING AND ACTIVITIES, INCLUDING PROVIDING AND IMPLEMENTING OVERALL TRAFFIC CONTROL PLAN, COORDINATION AND SCHEDULING, IN ACCORDANCE WITH PLANS, SPECS, TXDOT PERMITTING, AND TMUTCD, THE SUM OF	1	LS	\$5,623.29	\$5,623.29	\$12,000.00	\$12,000.00	\$8,690.00	\$8,690.00
3	OSHA COMPLIANT TRENCH SAFETY SYSTEM AS REQUIRED THROUGHOUT PROJECT COMPLETE IN PLACE AS PER PLANS AND SPECIFICATIONS, THE SUM OF	1	LS	\$1,739.20	\$1,739.20	\$3,000.00	\$3,000.00	\$1,950.00	\$1,950.00
4	CONSTRUCTION STAKING INCLUDING LOCATION, CONFIRMATION, AND TIE-IN OF PRE-ESTABLISHED BENCHMARKS, PROPERTY LINES, EASEMENTS, AND RIGHT OF WAYS, AS DESCRIBED IN PLANS, THE SUM OF	1	LS	\$2,906.97	\$2,906.97	\$4,500.00	\$4,500.00	\$7,150.00	\$7,150.00
5	EROSION CONTROL INCLUDING SWP3 SUBMISSION OF NOI AND NOT, INSTALLATION, INSPECTION, AND MAINTENANCE OF CONTROLS, AND SWP3 DOCUMENTATION THE SUM OF	1	LS	\$3,608.99	\$3,608.99	\$1,500.00	\$1,500.00	\$3,835.00	\$3,835.00
6	PRE-CONSTRUCTION LOCATION & CONFIRMATION OF EXISTING UTILITIES INCLUDING COORDINATION WITH TEXAS 811, FRANCHISE UTILITY COMPANIES, AND THE CITY OF ENNIS, LOCATION AND VERIFICATION OF EXACT DEPTH, LOCATION, SIZE, AND MATERIALS OF ALL UTILITIES PRIOR TO COMMENCING CONSTRUCTION ACTIVITIES, ALL EQUIPMENT, MATERIALS, LABOR & SUPERINTENDENCE, ALL IN ACCORDANCE WITH THE PLANS & SPECS, THE SUM OF	1	LS	\$2,165.49	\$2,165.49	\$20,000.00	\$20,000.00	\$1,985.00	\$1,985.00
7	CLEARING AND GRUBBING, ALL EQUIPMENT, MATERIALS, LABOR & SUPERINTENDENCE, ALL IN ACCORDANCE WITH THE PLANS & SPECS, THE SUM OF	50	SY	\$48.92	\$2,446.00	\$50.00	\$2,500.00	\$40.00	\$2,000.00
8	8" Ø AWWA C-900 DR 18 PC 235 PVC WATER MAIN, OPEN CUT, FURNISHED & INSTALLED, COMPLETE IN PLACE, READY FOR SERVICE, INCLUDING ALL FITTINGS, EQUIPMENT, INCIDENTALS, THRUST BLOCKING, BACKFILLING, SURFACE RESTORATION, ALL MATERIALS, LABOR & SUPERINTENDENCE, AND TESTING ALL IN ACCORDANCE WITH THE PLANS & SPECS, THE SUM OF	490	LF	\$137.88	\$67,561.20	\$335.00	\$164,150.00	\$174.00	\$85,260.00

9	8" GATE VALVE ASSEMBLY WITH RISER, FURNISHED & INSTALLED, COMPLETE IN PLACE, READY FOR SERVICE, TO INCLUDE EQUIPMENT, INCIDENTALS, ALL MATERIALS, LABOR & SUPERINTENDENCE, AND TESTING IN ACCORDANCE WITH THE PLANS & SPECS, THE SUM OF	5	EA	\$3,138.86	\$15,694.30	\$5,000.00	\$25,000.00	\$4,378.00	\$21,890.00
10	2" GATE VALVE ASSEMBLY WITH RISER, FURNISHED & INSTALLED, COMPLETE IN PLACE, READY FOR SERVICE, TO INCLUDE EQUIPMENT, INCIDENTALS, ALL MATERIALS, LABOR & SUPERINTENDENCE, AND TESTING IN ACCORDANCE WITH THE PLANS & SPECS, THE SUM OF	2	EA	\$1,366.24	\$2,732.48	\$2,000.00	\$4,000.00	\$1,730.00	\$3,460.00
11	INTERCONNECTION OF WATERLINE TO EXISTING WATERLINE, COMPLETE IN PLACE, READY FOR SERVICE, INCLUDING SCHEDULING AND NOTIFICATIONS FOR SHUTDOWNS, ALL FITTINGS, EQUIPMENT, INCIDENTALS, THRUST BLOCKING, BACKFILLING, TESTING, SURFACE RESTORATION, ALL MATERIALS, LABOR & SUPERINTENDENCE, AND TESTING ALL IN ACCORDANCE WITH THE PLANS & SPECS, THE SUM OF	2	EA	\$6,278.35	\$12,556.70	\$4,500.00	\$9,000.00	\$4,000.00	\$8,000.00
12	REPAIR OF CONCRETE PAVEMENT - PARKING LOT, FURNISHED & INSTALLED, COMPLETE IN PLACE, READY FOR SERVICE, INCLUDING FULL DEPTH SAW CUT EDGES, COMPACTION OF SUBGRADE, MIN. 8" DEPTH OF REINFORCED CONCRETE, ALL EQUIPMENT, INCIDENTALS, MATERIALS, LABOR & SUPERINTENDENCE, AND TESTING ALL IN ACCORDANCE WITH THE PLANS & SPECS, THE SUM OF	75	SY	\$315.57	\$23,667.75	\$130.00	\$9,750.00	\$227.00	\$17,025.00
13	REPAIR OF INTEGRAL CURB AND GUTTER, FURNISHED & INSTALLED, COMPLETE IN PLACE, READY FOR SERVICE, INCLUDING FULL DEPTH SAW CUT EDGES, COMPACTION OF SUBGRADE, REINFORCED CONCRETE, ALL EQUIPMENT, INCIDENTALS, MATERIALS, LABOR & SUPERINTENDENCE, AND TESTING ALL IN ACCORDANCE WITH THE PLANS & SPECS, THE SUM OF	120	LF	\$105.06	\$12,607.20	\$15.00	\$1,800.00	\$69.00	\$8,280.00
14	REPAIR OF CONCRETE PAVEMENT - DRIVE, FURNISHED & INSTALLED, COMPLETE IN PLACE, READY FOR SERVICE, INCLUDING FULL DEPTH SAW CUT EDGES, COMPACTION OF SUBGRADE, MIN. 8" DEPTH OF REINFORCED CONCRETE, ALL EQUIPMENT, INCIDENTALS, MATERIALS, LABOR & SUPERINTENDENCE, AND TESTING ALL IN ACCORDANCE WITH THE PLANS & SPECS, THE SUM OF	15	SY	\$603.08	\$9,046.20	\$130.00	\$1,950.00	\$266.00	\$3,990.00

15	REPAIR OF CONCRETE PAVEMENT - SIDEWALK, FURNISHED & INSTALLED, COMPLETE IN PLACE, READY FOR SERVICE, INCLUDING FULL DEPTH SAW CUT EDGES, COMPACTION OF SUBGRADE, MIN. 4" DEPTH OF REINFORCED CONCRETE, ALL EQUIPMENT, INCIDENTALS, MATERIALS, LABOR & SUPERINTENDENCE, AND TESTING ALL IN ACCORDANCE WITH THE PLANS & SPECS, THE SUM OF	70	SY	\$219.42	\$15,359.40	\$90.00	\$6,300.00	\$125.00	\$8,750.00
16	REPAIR OF HMAC PAVEMENT, FURNISHED & INSTALLED, COMPLETE IN PLACE, READY FOR SERVICE, INCLUDING FULL DEPTH SAW CUT EDGES, COMPACTION OF SUBGRADE, 6" FLEXIBLE BASE, 2" HMAC, PRIME/TACK COATS, ALL EQUIPMENT, INCIDENTALS, MATERIALS, LABOR & SUPERINTENDENCE, AND TESTING ALL IN ACCORDANCE WITH THE PLANS & SPECS, THE SUM OF	10	SY	\$466.24	\$4,662.40	\$100.00	\$1,000.00	\$685.00	\$6,850.00
17	REMOVE AND REPLACE FIRE HYDRANT ASSEMBLY, COMPLETE IN PLACE, READY FOR SERVICE, INCLUDING GATE VALVE, ALL FITTINGS, EQUIPMENT, INCIDENTALS, THRUST BLOCKING, BACKFILLING, TESTING, SURFACE RESTORATION, ALL MATERIALS, LABOR & SUPERINTENDENCE, AND TESTING ALL IN ACCORDANCE WITH THE PLANS & SPECS, THE SUM OF	1	EA	\$14,186.33	\$14,186.33	\$8,500.00	\$8,500.00	\$9,388.00	\$9,388.00
18	RECONNECT EXISTING SERVICES TO NEW 8" WATERLINE, COMPLETE IN PLACE, READY FOR SERVICE, ALL FITTINGS, EQUIPMENT, INCIDENTALS, THRUST BLOCKING, BACKFILLING, TESTING, SURFACE RESTORATION, ALL MATERIALS, LABOR & SUPERINTENDENCE, AND TESTING ALL IN ACCORDANCE WITH THE PLANS & SPECS, THE SUM OF	3	EA	\$3,209.94	\$9,629.82	\$2,000.00	\$6,000.00	\$3,540.00	\$10,620.00
19	CORE NEW WATERLINE THROUGH EXISTING CONCRETE CHANNEL, COMPLETE IN PLACE, READY FOR SERVICE, TESTING, SURFACE RESTORATION, ALL MATERIALS, LABOR & SUPERINTENDENCE, AND TESTING ALL IN ACCORDANCE WITH THE PLANS & SPECS, THE SUM OF	1	LS	\$3,059.46	\$3,059.46	\$2,000.00	\$2,000.00	\$12,085.00	\$12,085.00
20	14" OPEN CUT STEEL CASING, COMPLETE IN PLACE, READY FOR SERVICE, TESTING, SURFACE RESTORATION, ALL MATERIALS, LABOR & SUPERINTENDENCE, AND TESTING ALL IN ACCORDANCE WITH THE PLANS & SPECS, THE SUM OF	100	LF	\$201.89	\$20,189.00	\$300.00	\$30,000.00	\$156.00	\$15,600.00

21	CONCRETE RIP-RAP, FURNISHED & INSTALLED, COMPLETE IN PLACE, READY FOR SERVICE, INCLUDING FULL DEPTH SAW CUT EDGES, COMPACTION OF SUBGRADE, MIN. 4" DEPTH OF REINFORCED CONCRETE, ALL EQUIPMENT, INCIDENTALS, MATERIALS, LABOR & SUPERINTENDENCE, AND TESTING ALL IN ACCORDANCE WITH THE PLANS & SPECS, THE SUM OF	50	SY	\$256.12	\$12,806.00	\$150.00	\$7,500.00	\$154.00	\$7,700.00
22	LOCATE, REMOVE, AND REPLACE EXISTING 1" IRRIGATION LINE, COMPLETE IN PLACE, READY FOR SERVICE, TESTING, SURFACE RESTORATION, ALL MATERIALS, LABOR & SUPERINTENDENCE, AND TESTING ALL IN ACCORDANCE WITH THE PLANS & SPECS, THE SUM OF	280	LF	\$139.38	\$39,026.40	\$5.00	\$1,400.00	\$11.00	\$3,080.00
23	LOCATE, REMOVE, AND REPLACE EXISTING IRRIGATION SPRINKLER HEAD, COMPLETE IN PLACE, READY FOR SERVICE, TESTING, SURFACE RESTORATION, ALL MATERIALS, LABOR & SUPERINTENDENCE, AND TESTING ALL IN ACCORDANCE WITH THE PLANS & SPECS, THE SUM OF	24	EA	\$938.61	\$22,526.64	\$25.00	\$600.00	\$291.00	\$6,984.00
24	LOCATE, REMOVE, AND REPLACE EXISTING 2" IRRIGATION LINE, COMPLETE IN PLACE, READY FOR SERVICE, TESTING, SURFACE RESTORATION, ALL MATERIALS, LABOR & SUPERINTENDENCE, AND TESTING ALL IN ACCORDANCE WITH THE PLANS & SPECS, THE SUM OF	50	LF	\$450.53	\$22,526.50	\$8.00	\$400.00	\$18.00	\$900.00
25	LOCATE, REMOVE, AND REPLACE EXISTING IRRIGATION CONTROL VALVE, COMPLETE IN PLACE, READY FOR SERVICE, TESTING, SURFACE RESTORATION, ALL MATERIALS, LABOR & SUPERINTENDENCE, AND TESTING ALL IN ACCORDANCE WITH THE PLANS & SPECS, THE SUM OF	1	EA	\$6,026.55	\$6,026.55	\$650.00	\$650.00	\$1,209.00	\$1,209.00
26	EXISTING WATERLINE TO BE GROUTED IN PLACE BENEATH PAVEMENT WITH FLOWABLE FILL, REMOVAL OF ALL VALVES, FIRE HYDRANTS, AND ANY OTHER EXISTING WATER APPURTENANCES, ALL PER TXDOT SPECIFICATOINS, ALL EQUIPMENT, INCIDENTALS, MATERIALS, LABOR & SUPERINTENDENCE, ALL IN ACCORDANCE WITH THE PLANS & SPECS, THE SUM OF	100	LF	\$85.77	\$8,577.00	\$15.00	\$1,500.00	\$27.00	\$2,700.00
27	REMOVE AND REPLACE MANHOLE RING AND COVER, ALL EQUIPMENT, MATERIALS, LABOR & SUPERINTENDENCE, ALL IN ACCORDANCE WITH THE PLANS & SPECS, THE SUM OF	1	EA	\$1,995.55	\$1,995.55	\$2,500.00	\$2,500.00	\$1,936.00	\$1,936.00
<b>Total</b>					<b>\$362,143.85</b>		<b>\$343,500.00</b>		<b>\$276,817.00</b>