

Division Street and Seymour Avenue Safety Improvements

City of Derby
July 10, 2025

 **Luchs** | Solutions Ahead of the Curve
CONSULTING ENGINEERS

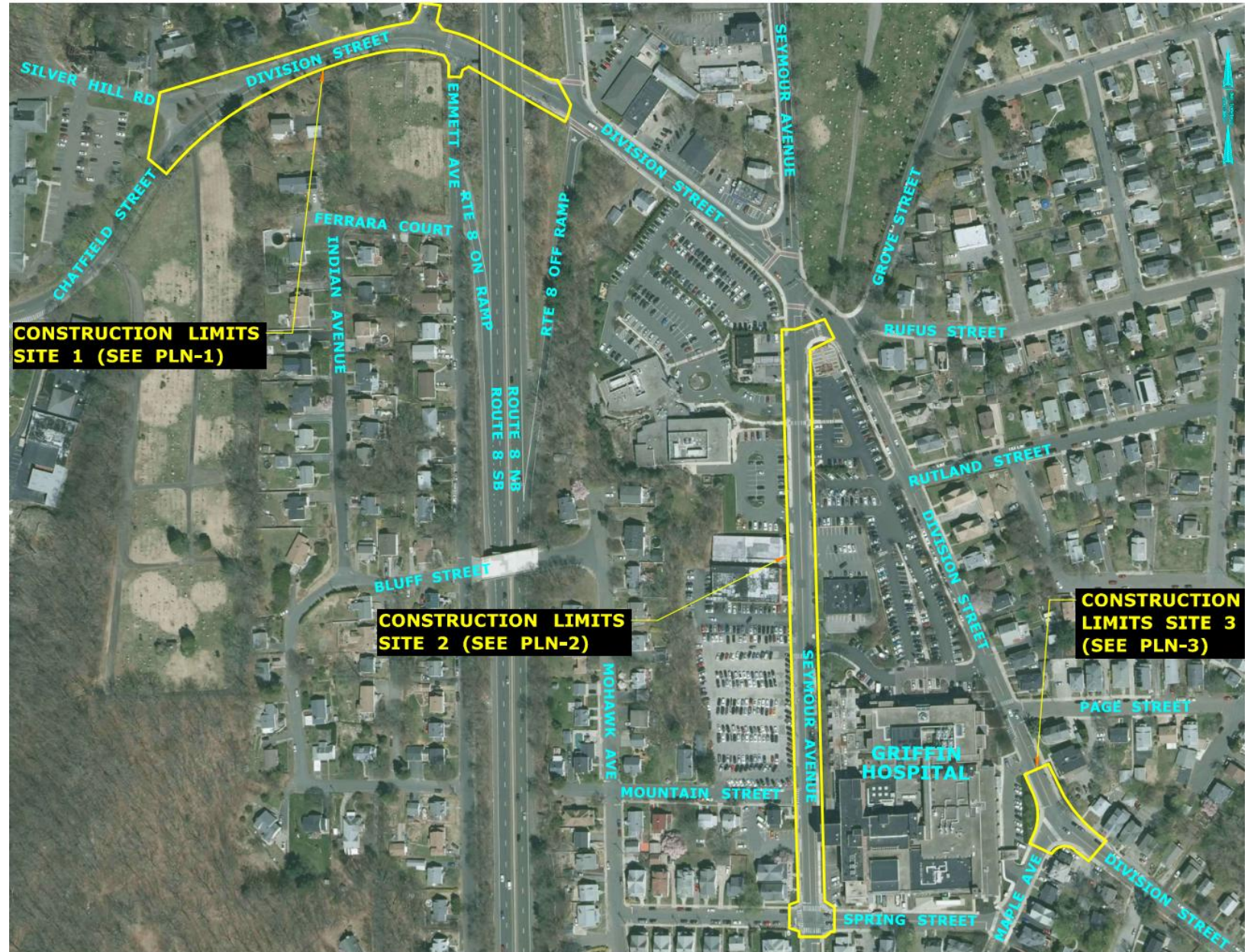


Proposed Overview

The project consists of three sites:

1. Division Street Improvements
2. Seymour Avenue pedestrian improvements
3. Maple Avenue Intersection with Division Street

Luchs Solutions Ahead of the Curve
CONSULTING ENGINEERS



Need for Improvements

Sidewalks:

- Deteriorating Roadway
- Non-ADA compliant sidewalks and ramps
- Deteriorating curbs and sidewalks
- Inadequate pedestrian crossings

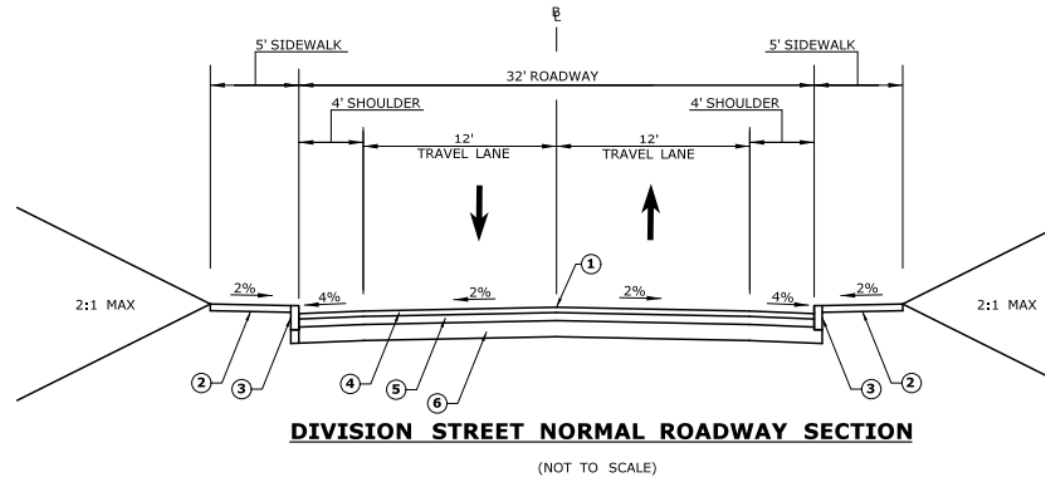
Challenging Intersection with Silver Hill Road



Typical Road Sections

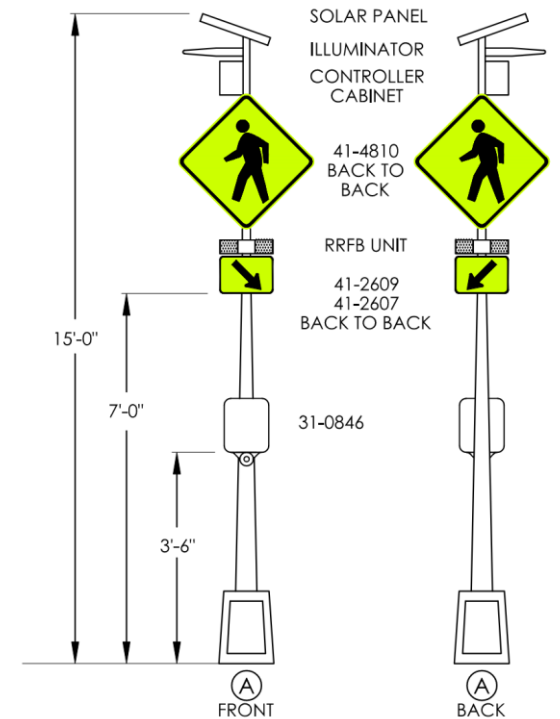
Reconstruction of Division Street

- Provide 5' wide sidewalks
- Provide ADA compliant sidewalk ramps
- Reconstruct failing street pavement
- Provide proper pedestrian crosswalks



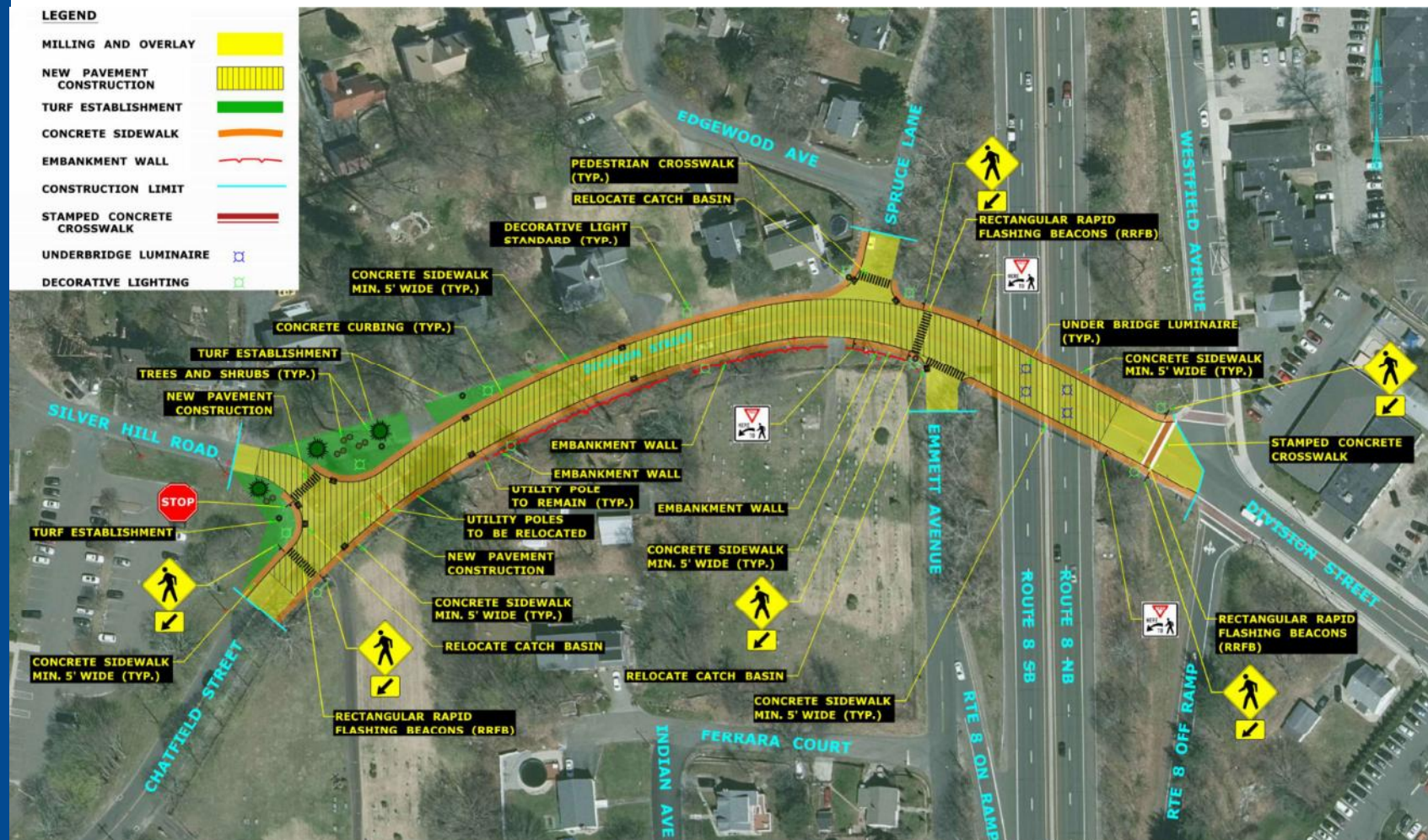
LEGEND

- ① POINT OF APPLICATION OF GRADE
- ② CONCRETE SIDEWALK
- ③ CONCRETE CURBING
- ④ 2" HMA S0.5 (TRAFFIC LEVEL 2) (PLACE IN TWO EQUAL LIFTS)
- ⑤ 4" HMA S1 (TRAFFIC LEVEL 2) (PLACE IN TWO EQUAL LIFTS)
- ⑥ 10" PROCESSED AGGREGATE BASE
- ⑦ EMBANKMENT WALL (HEIGHT VARIES)



Proposed Improvements Division Street

- Full width concrete sidewalks
- Retaining wall to hold back the sloped earth
- Relocate utilities
- Compliant Pedestrian crossings
- Illumination under bridge
- Re-align Silver Hill Rd. intersection
- Road paving



(From Chatfield St. & Silver Hill Rd. intersection to Westfield Ave & Rt. 8 off ramp)

Proposed Improvements

Seymour Avenue

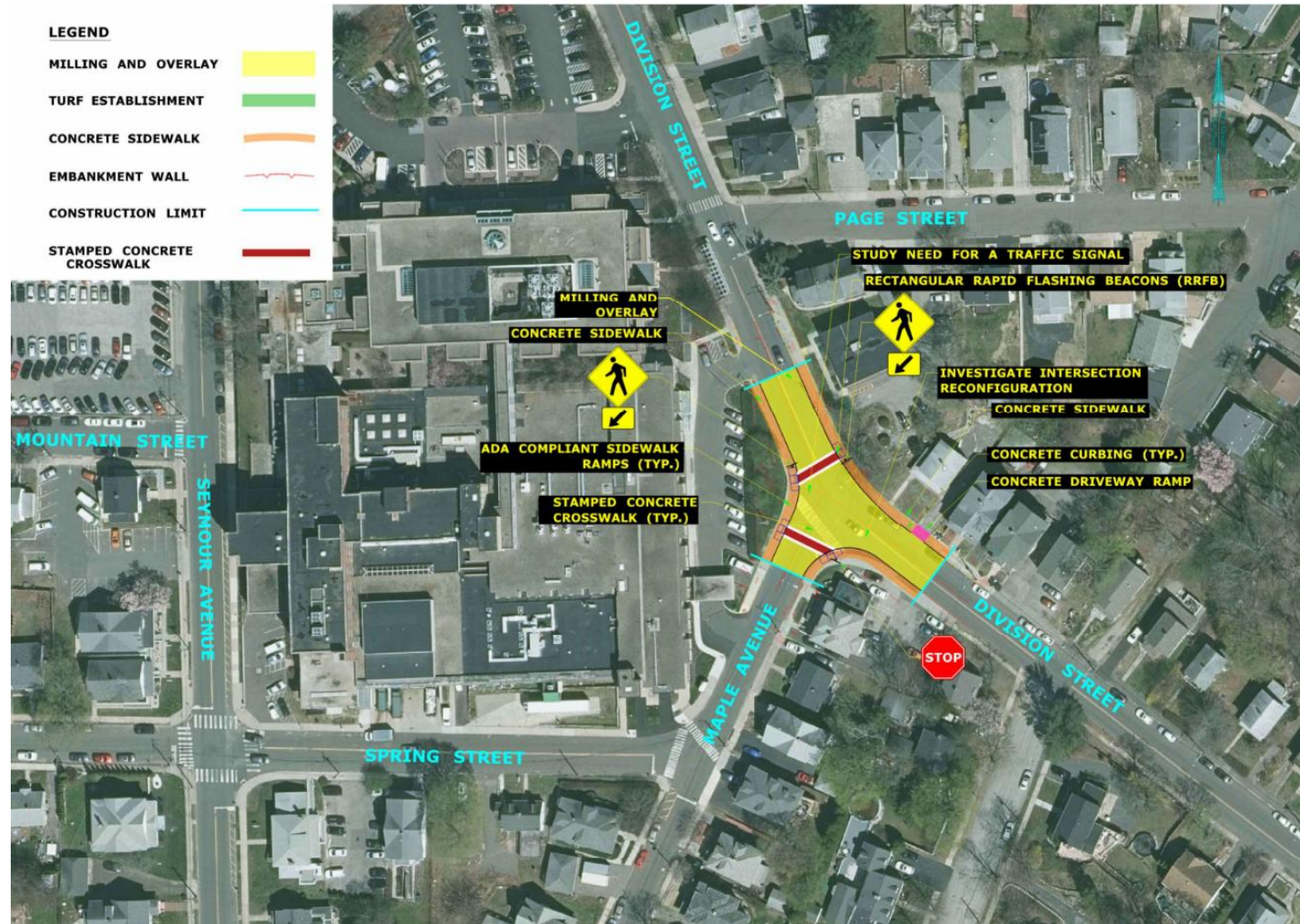
- Concrete sidewalk construction where missing
- Relocate utilities
- ADA compliant Pedestrian crossings
- Mid-block Rectangular Rapid Flashing Beacons (RRFB)



(From Division St. to Spring St.)

Proposed Improvements Maple Avenue

- Possible reconfigure intersection
- Concrete sidewalk construction
- ADA compliant Pedestrian crossings



(Griffin Hospital entrance to Spring St. & Maple Ave. intersection)

Proposed Funding

Estimated Project Construction Costs
(Including Contingencies and Incidentals)

Site	Street name	Estimate Cost
1	Division Street	\$ 2,372,000
2	Seymour Avenue	\$ 1,073,000
3	Maple Avenue Intersection	\$ 418,000
Total:		\$ 3,863,000

Anticipated Design Costs:

City of Derby
\$125,000 ARPA Fund

Griffin Hospital
\$125,000 Donation



Improving communities
TOGETHER

Luchs Consulting Engineers
Solutions Ahead of the Curve

Proposed Schedule

Project Timeline

Phase	Milestone	Time Period
1	Final Design	Fall 2025
2	Bid Phase	Winter 2025
3	Construction	Spring/Summer 2026



Improving
communities
TOGETHER

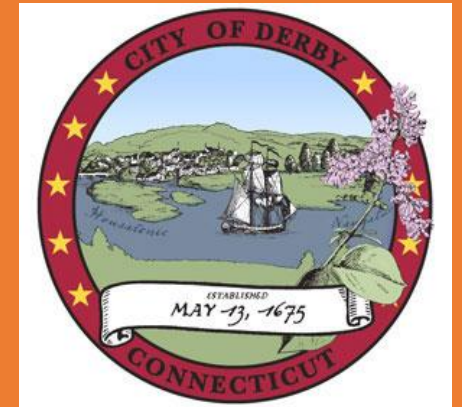
 **Luchs** Solutions Ahead of the Curve
CONSULTING ENGINEERS

Closing Remarks

Investing in sidewalk reconstruction and pedestrian crossings is crucial for fostering safer communities and promoting active lifestyles.

Improved sidewalks enhance pedestrian accessibility, reducing accidents and encouraging walking, which benefits public health and the environment.

By prioritizing these upgrades, we prioritize the well-being and connectivity of our residents, making our neighborhoods more livable and inclusive for everyone.





Improving
communities
TOGETHER

 **Luchs** Solutions Ahead of the Curve
CONSULTING ENGINEERS

Public Review

Project Plans can be viewed at
the Office of Economic Development in City Hall
Or at the following link:

<https://www.derbyct.gov/meetingdashboard>

Questions & Feedback

Public questions or feedback can be sent to:

talamellik@luchs.com

**Thank you for your
time and consideration.**

