

STEENROD ELEMENTARY

RENOVATIONS AND ADDITION

OWNER:

PROJECT LOCATION:
 OCS STEENROD ELEMENTARY SCHOOL
 100 CLARKS LANE
 WHEELING, WV 26003

OHIO COUNTY BOARD OF EDUCATION
 2203 NATIONAL RD
 WHEELING, WV 26003

INDEX OF DRAWINGS 03/06/2020

COVER SHEET LOCATION MAP, INDEX OF DRAWINGS AND CODE INFORMATION

SW.01 SURVEY
 SW.02 SITE DETAILS

SITE DRAWINGS EXISTING CONDITIONS

CO.01 SEDIMENT AND EROSION CONTROL PLAN
 CO.02 DEMOLITION AND EROSION CONTROL DETAILS
 CO.03 DEMOLITION PLAN
 C1.01 PAVING PLAN
 C1.02 SITE GRADING PLAN
 C1.03 GEOMETRIC LAYOUT
 C1.04 SITE UTILITY PLAN
 C1.05 WATER, SEWER, AND SITE DETAILS
 C2.01 DETAILS
 C2.02

ARCHITECTURAL DRAWINGS

AA.01 FIRST FLOOR EGRESS PLAN & FIN. SCHEDULES
 AD1.01 FIRST FLOOR DEMOLITION PLAN
 AD1.02 SECOND FLOOR DEMOLITION PLAN
 A1.01 FIRST FLOOR PLAN
 A1.02 SECOND FLOOR & ROOF PLAN
 A2.01 ELEVATIONS
 A3.01 SECTIONS
 A3.02 EXISTING WALL SECTIONS
 A3.03 NEW WALL SECTIONS
 A3.04 NEW TRANSVERSE WALL SECTION
 A3.05 WALL DETAILS
 A4.01 REFLECTED CEILING PLAN
 A4.01 ENLARGED PLANS
 A5.01 WINDOW SCHEDULE & ELEVATIONS
 A6.01 DOOR AND FINISH SCHEDULES
 A6.02

FOOD SERVICE DRAWINGS

QF.100 FOOD SERVICE EQUIPMENT SCHEDULE
 QF.101 FOOD SERVICE EQUIPMENT PLAN
 QF.102 PLUMBING & MECHANICAL CONNECTION SCHEDULE
 QF.103 PLUMBING CONNECTION PLAN
 QF.104 ELECTRICAL CONNECTION SCHEDULE
 QF.105 ELECTRICAL CONNECTION PLAN
 QF.106 MECHANICAL CONNECTION PLAN
 QF.200 CUSTOM FABRICATION DETAILS
 QF.201

STRUCTURAL DRAWINGS

S1.01 FOUNDATION PLAN
 S1.02 SECOND FLOOR/LOW ROOF FRAMING PLAN
 S2.01 GENERAL NOTES & SCHEDULES
 S2.02 SPECIAL INSPECTIONS & TYPICAL DETAILS
 S2.03 TYPICAL DETAILS
 S2.04 TYPICAL DETAILS
 S3.01 FOUNDATION SECTIONS AND DETAILS
 S3.01 FOUNDATION SECTIONS AND DETAILS
 S3.02 STRUCTURAL SECTIONS AND DETAILS
 S4.01



ARCHITECTURE + ENGINEERING
 WHEELING, WEST VIRGINIA 26003 P (304)233-0140 F
 (304)233-4613
 WWW.MCKINLEYDELIVERS.COM

FIRE PROTECTION DRAWINGS

FP1.01 FIRE PROTECTION PLAN

PLUMBING DRAWINGS

P1.01 SANITARY PLUMBING PLAN
 P2.01 SUPPLY PLUMBING PLAN
 P3.01 GAS PLUMBING PLAN
 P4.01 PLUMBING NOTES & DETAILS

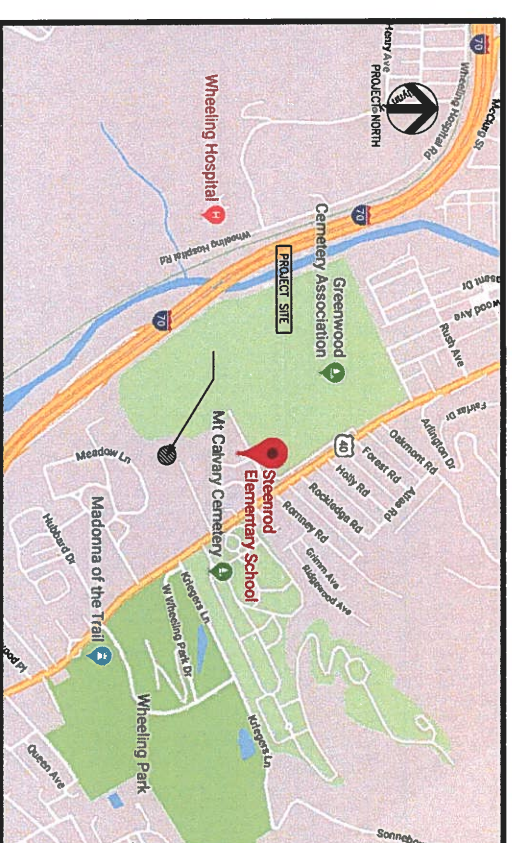
HVAC DRAWINGS

M0.00 MECHANICAL LEGEND
 M1.01 FIRST FLOOR HVAC DEMOLITION
 M1.02 SECOND FLOOR HVAC DEMOLITION
 M2.01 FIRST FLOOR HVAC PLAN
 M2.02 SECOND FLOOR HVAC PLAN
 M3.01 FIRST FLOOR HYDRONIC PLAN
 M3.02 SECOND FLOOR HYDRONIC PLAN
 M4.01 MECHANICAL DETAILS
 M4.01 MECHANICAL SCHEMATICS
 M5.01 MECHANICAL SCHEDULES
 M6.01 MECHANICAL SCHEDULES
 M7.01 MECHANICAL CONTROLS
 M7.02 MECHANICAL CONTROLS
 M7.03

ELECTRICAL DRAWINGS

E1.01 FIRST FLOOR POWER PLAN
 E1.02 SECOND FLOOR POWER PLAN
 E2.01 FIRST FLOOR LIGHTING PLAN
 E3.01 ELECTRIC SERVICE DETAIL AND NOTES

LOCATION MAP



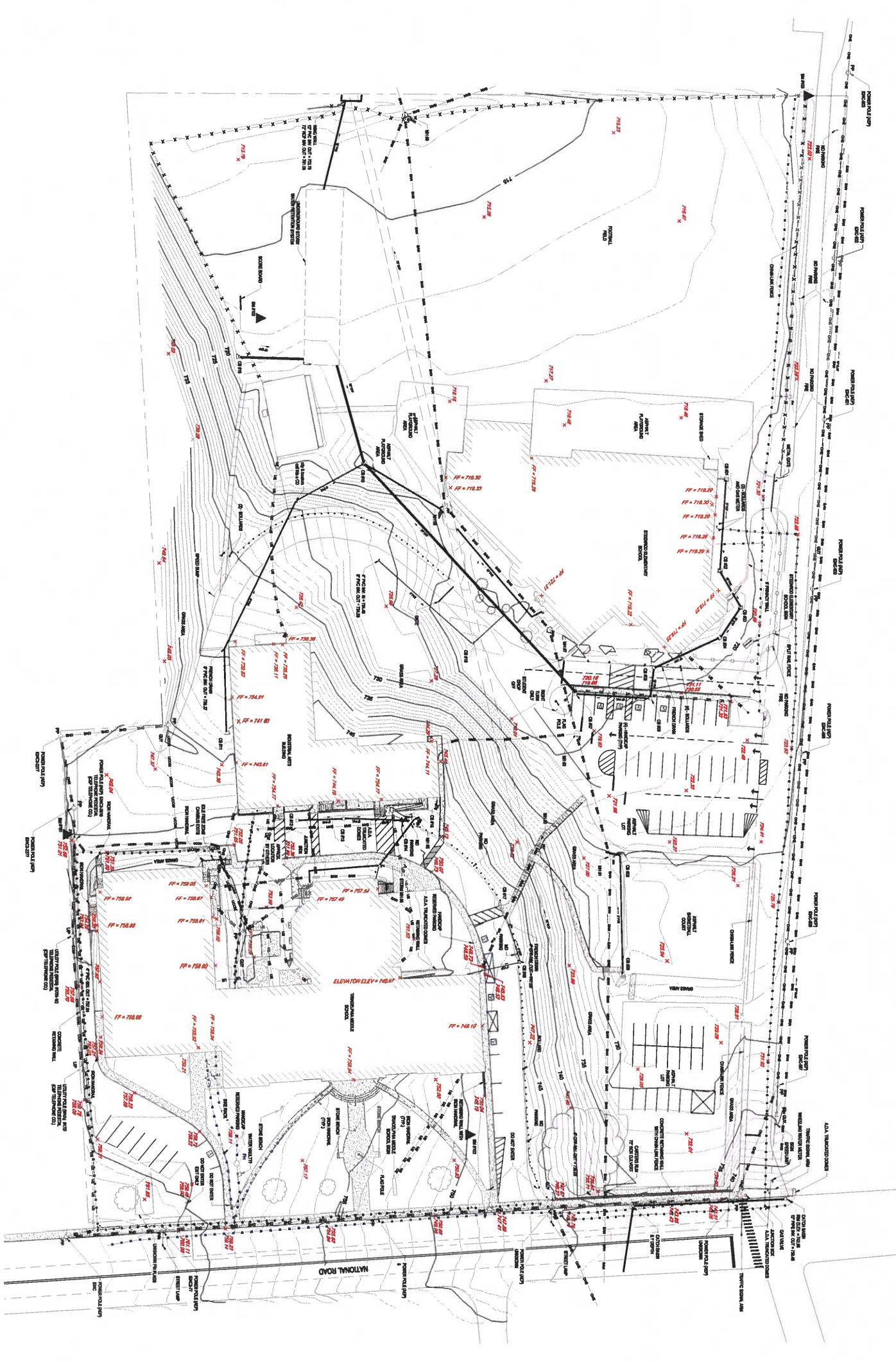
CODE INFORMATION

CODE: STATE FIRE CODE (SFC) -
 2015 NFPA NATIONAL FIRE CODES
 STATE BUILDING CODE (SBC) -
 2015 I-CODES, ASHRAE 90.1-2010
 OCCUPANCY: EDUCATIONAL, EXISTING
 CONSTRUCTION TYPE: TYPE II (000)
 TOTAL SQUARE FOOTAGE: 4,167 (ADDITION)
 23,565 (EXISTING)
 FIRE PROTECTION: FULLY SPRINKLERED (EXISTING)

REGISTERED DESIGN CERTIFICATIONS

| | | | | |
|---------------------------------------|---------------|---------------------|---------------|--|
| | | | | |
| ARCHITECTURAL & FOOD SERVICE DRAWINGS | SITE DRAWINGS | STRUCTURAL DRAWINGS | HVAC DRAWINGS | FIRE PROTECTION, PLUMBING, & ELECTRICAL DRAWINGS |

BID ITEM 1



UTILITY LOCATION NOTES:

- UNDERGROUND UTILITIES AND FEATURES WERE LOCATED UTILIZING WEST VIRGINIA #11 HISTORICAL INFORMATION, GEOLOCATION, UTILITY PLATS, ETC. VISUAL EVIDENCE, AND MULTI-FREQUENCY ELECTROMAGNETIC (EM) SURVEY. OTHER BURIED UTILITIES MAY EXIST BUT WERE NOT DETECTED DUE TO LIMITATIONS OF THE EM SYSTEMS. SITE ACCESS, AROUND HIGH UTILITY CONSTRUCTION, THEREFORE, DUE CAUTION SHOULD BE USED WHEN PERFORMING SURFACE EXCAVATION ACTIVITIES WHERE POTENTIAL CONFLICT EXISTS. DIEFFENBAUCH AND HRITZ, LLC IS NOT RESPONSIBLE FOR DAMAGES THAT MAY OCCUR, UTILIZING VACUUM EXCAVATION IS HIGHLY RECOMMENDED TO REDUCE THE POSSIBILITY OF DAMAGE TO UNDERGROUND UTILITIES.
- DEPTH TO CENTER OF UTILITY WHERE POSTED IS ESTIMATED BASED ON EM ELECTROMAGNETIC INFORMATION DATA UNLESS OTHERWISE NOTED AND IS FOR REFERENCE ONLY. DIEFFENBAUCH AND HRITZ, LLC RECOMMENDS THAT ANY AND ALL UTILITY LOCATIONS BE VERIFIED BY EXPOSURE TO ALLOW A PHYSICAL DEPTH MEASUREMENT. CALIBRATION INFORMATION UNLESS OTHERWISE NOTED.

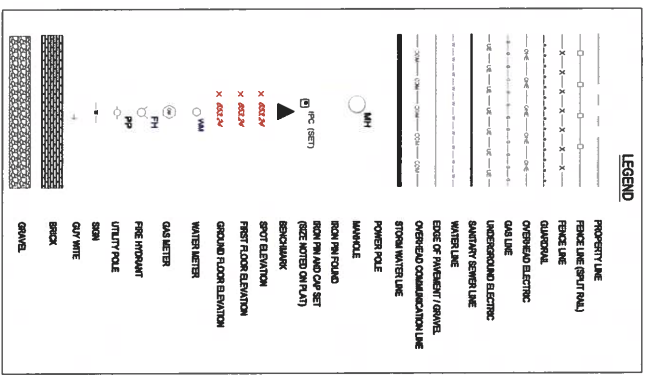
GENERAL NOTES:

- THIS SURVEY WAS PERFORMED WITHOUT THE BENEFIT OF A TITLE REPORT AND DOES NOT REFLECT ALL EXCEPTIONS, RIGHTS-OF-WAYS, RESTRICTIONS OR ENCUMBRANCES.
- BOUNDARY INFORMATION IS BASED ON A FIELD RUN SURVEY BY DIEFFENBAUCH AND HRITZ IN NOVEMBER OF 2018 AND INFORMATION OF RECORD IN U.S. SURVEY FEET, AND ARE BASED ON SAND HORIZONTAL DATUM.
- SURVEY DATA REFERENCE TO WV-SPC NORTH ZONE HORIZONTAL (NAD 83/2011) VERTICAL (NAVD 88) (GEOID 8)
- BEARINGS AND DISTANCES ARE GRID DISTANCES AND ARE BASED ON U.S. STATE PLANE WEST VIRGINIA NORTH ZONE, NORTH AMERICAN DATUM, 1983 DATUM.
- PROJECT AREAS LOCATED WITHIN ZONE X (100-YEAR FLOOD ZONE) AS PER THE FIRM MAP NUMBER S06820080, PANEL 68 OF 83, EFFECTIVE DATE 04/11/2008.

| BM NO. | NORTHING | EASTING | BENCHMARK CONTROL | MARKER | ELEVATION |
|--------|----------|-----------|-------------------|--------|-----------|
| BM-100 | 570322.6 | 1638888.2 | CONCRETE MONUMENT | 722.90 | |
| BM-101 | 570119.3 | 1639338.9 | CONCRETE MONUMENT | 752.06 | |
| BM-102 | 570091.7 | 1639233.7 | NAIL AND CAP | 761.00 | |
| BM-103 | 570491.1 | 1639822.9 | NAIL AND CAP | 750.09 | |

| CATCH BASIN | RM/ELEV. | INVERT | SIZE | PIPE TYPE |
|-------------|----------|--------|------|-----------|
| MH-001 | 726.65 | 715.54 | 12" | CLAY |
| MH-002 | 719.59 | 714.94 | 6" | CLAY |
| MH-003 | 714.59 | 714.55 | 12" | CLAY |
| MH-004 | 724.33 | 714.55 | 12" | CLAY |
| MH-005 | 748.77 | 746.51 | 8" | PVC |
| MH-006 | 745.14 | 745.14 | 6" | PVC |
| MH-007 | 743.19 | 743.19 | 12" | CLAY |
| MH-008 | 743.14 | 743.14 | 12" | CLAY |
| MH-009 | 751.12 | 743.04 | 6" | PVC |
| MH-010 | 719.09 | 714.04 | 12" | CLAY |
| MH-011 | 713.81 | 713.81 | 12" | PVC |
| MH-012 | 718.75 | 711.87 | 4" | PVC |
| MH-013 | 718.75 | 711.75 | 12" | PVC |
| MH-014 | 714.35 | 709.61 | 8" | PVC |
| MH-015 | 709.66 | 709.66 | 12" | PVC |
| MH-016 | 708.66 | 708.66 | 12" | PVC |
| MH-017 | 700.16 | 700.16 | 12" | PVC |
| MH-018 | 697.91 | 697.91 | 12" | CLAY |

SIGNED: HERBERT I. PARSONS III P.S. #281



| CATCH BASIN | RM/ELEV. | INVERT | IN/OUT | SIZE | PIPE TYPE |
|-------------|----------|--------|--------|------|-----------|
| CB #01 | 718.80 | 716.82 | IN | 4" | PVC |
| CB #02 | 718.99 | 716.51 | OUT | 8" | VCP |
| CB #03 | 718.76 | 715.14 | IN | 8" | VCP |
| CB #04 | 718.76 | 715.85 | OUT | 12" | PVC |
| CB #05 | 718.79 | 715.84 | OUT | 12" | PVC |
| CB #06 | 718.79 | 715.77 | IN | 12" | PVC |
| CB #07 | 718.84 | 715.67 | OUT | 12" | CPV |
| CB #08 | 718.84 | 715.46 | IN | 12" | CPV |
| CB #09 | 718.84 | 715.46 | OUT | 15" | PVC |
| CB #10 | 718.84 | 715.46 | IN | 15" | PVC |
| CB #11 | 719.49 | 719.49 | OUT | 15" | PVC |
| CB #12 | 719.49 | 719.49 | IN | 15" | PVC |
| CB #13 | 719.49 | 719.49 | OUT | 12" | PVC |
| CB #14 | 719.49 | 719.49 | IN | 12" | PVC |
| CB #15 | 719.49 | 719.49 | OUT | 24" | CPV |
| CB #16 | 725.04 | 723.7 | IN | 8" | PVC |
| CB #17 | 723.44 | 723.44 | OUT | 12" | PVC |
| CB #18 | 725.83 | 724.68 | OUT | 8" | PVC |
| CB #19 | 714.94 | 714.94 | IN | 36" | CPV |
| CB #20 | 710.43 | 710.43 | IN | 24" | CPV |
| CB #21 | 710.43 | 710.43 | IN | 24" | CPV |
| CB #22 | 710.43 | 710.43 | OUT | 24" | CPV |
| CB #23 | 710.43 | 710.43 | OUT | 24" | CPV |
| CB #24 | 710.43 | 710.43 | OUT | 24" | CPV |
| CB #25 | 710.43 | 710.43 | OUT | 24" | CPV |
| CB #26 | 710.43 | 710.43 | OUT | 24" | CPV |
| CB #27 | 710.43 | 710.43 | OUT | 24" | CPV |
| CB #28 | 710.43 | 710.43 | OUT | 24" | CPV |
| CB #29 | 710.43 | 710.43 | OUT | 24" | CPV |
| CB #30 | 710.43 | 710.43 | OUT | 24" | CPV |
| CB #31 | 710.43 | 710.43 | OUT | 24" | CPV |
| CB #32 | 710.43 | 710.43 | OUT | 24" | CPV |
| CB #33 | 710.43 | 710.43 | OUT | 24" | CPV |
| CB #34 | 710.43 | 710.43 | OUT | 24" | CPV |
| CB #35 | 710.43 | 710.43 | OUT | 24" | CPV |
| CB #36 | 710.43 | 710.43 | OUT | 24" | CPV |
| CB #37 | 710.43 | 710.43 | OUT | 24" | CPV |
| CB #38 | 710.43 | 710.43 | OUT | 24" | CPV |
| CB #39 | 710.43 | 710.43 | OUT | 24" | CPV |
| CB #40 | 710.43 | 710.43 | OUT | 24" | CPV |
| CB #41 | 710.43 | 710.43 | OUT | 24" | CPV |
| CB #42 | 710.43 | 710.43 | OUT | 24" | CPV |
| CB #43 | 710.43 | 710.43 | OUT | 24" | CPV |
| CB #44 | 710.43 | 710.43 | OUT | 24" | CPV |
| CB #45 | 710.43 | 710.43 | OUT | 24" | CPV |
| CB #46 | 710.43 | 710.43 | OUT | 24" | CPV |
| CB #47 | 710.43 | 710.43 | OUT | 24" | CPV |
| CB #48 | 710.43 | 710.43 | OUT | 24" | CPV |
| CB #49 | 710.43 | 710.43 | OUT | 24" | CPV |
| CB #50 | 710.43 | 710.43 | OUT | 24" | CPV |
| CB #51 | 710.43 | 710.43 | OUT | 24" | CPV |
| CB #52 | 710.43 | 710.43 | OUT | 24" | CPV |
| CB #53 | 710.43 | 710.43 | OUT | 24" | CPV |
| CB #54 | 710.43 | 710.43 | OUT | 24" | CPV |
| CB #55 | 710.43 | 710.43 | OUT | 24" | CPV |
| CB #56 | 710.43 | 710.43 | OUT | 24" | CPV |
| CB #57 | 710.43 | 710.43 | OUT | 24" | CPV |
| CB #58 | 710.43 | 710.43 | OUT | 24" | CPV |
| CB #59 | 710.43 | 710.43 | OUT | 24" | CPV |
| CB #60 | 710.43 | 710.43 | OUT | 24" | CPV |
| CB #61 | 710.43 | 710.43 | OUT | 24" | CPV |
| CB #62 | 710.43 | 710.43 | OUT | 24" | CPV |
| CB #63 | 710.43 | 710.43 | OUT | 24" | CPV |
| CB #64 | 710.43 | 710.43 | OUT | 24" | CPV |
| CB #65 | 710.43 | 710.43 | OUT | 24" | CPV |
| CB #66 | 710.43 | 710.43 | OUT | 24" | CPV |
| CB #67 | 710.43 | 710.43 | OUT | 24" | CPV |
| CB #68 | 710.43 | 710.43 | OUT | 24" | CPV |
| CB #69 | 710.43 | 710.43 | OUT | 24" | CPV |
| CB #70 | 710.43 | 710.43 | OUT | 24" | CPV |
| CB #71 | 710.43 | 710.43 | OUT | 24" | CPV |
| CB #72 | 710.43 | 710.43 | OUT | 24" | CPV |
| CB #73 | 710.43 | 710.43 | OUT | 24" | CPV |
| CB #74 | 710.43 | 710.43 | OUT | 24" | CPV |
| CB #75 | 710.43 | 710.43 | OUT | 24" | CPV |
| CB #76 | 710.43 | 710.43 | OUT | 24" | CPV |
| CB #77 | 710.43 | 710.43 | OUT | 24" | CPV |
| CB #78 | 710.43 | 710.43 | OUT | 24" | CPV |
| CB #79 | 710.43 | 710.43 | OUT | 24" | CPV |
| CB #80 | 710.43 | 710.43 | OUT | 24" | CPV |
| CB #81 | 710.43 | 710.43 | OUT | 24" | CPV |
| CB #82 | 710.43 | 710.43 | OUT | 24" | CPV |
| CB #83 | 710.43 | 710.43 | OUT | 24" | CPV |
| CB #84 | 710.43 | 710.43 | OUT | 24" | CPV |
| CB #85 | 710.43 | 710.43 | OUT | 24" | CPV |
| CB #86 | 710.43 | 710.43 | OUT | 24" | CPV |
| CB #87 | 710.43 | 710.43 | OUT | 24" | CPV |
| CB #88 | 710.43 | 710.43 | OUT | 24" | CPV |
| CB #89 | 710.43 | 710.43 | OUT | 24" | CPV |
| CB #90 | 710.43 | 710.43 | OUT | 24" | CPV |
| CB #91 | 710.43 | 710.43 | OUT | 24" | CPV |
| CB #92 | 710.43 | 710.43 | OUT | 24" | CPV |
| CB #93 | 710.43 | 710.43 | OUT | 24" | CPV |
| CB #94 | 710.43 | 710.43 | OUT | 24" | CPV |
| CB #95 | 710.43 | 710.43 | OUT | 24" | CPV |
| CB #96 | 710.43 | 710.43 | OUT | 24" | CPV |
| CB #97 | 710.43 | 710.43 | OUT | 24" | CPV |
| CB #98 | 710.43 | 710.43 | OUT | 24" | CPV |
| CB #99 | 710.43 | 710.43 | OUT | 24" | CPV |
| CB #100 | 710.43 | 710.43 | OUT | 24" | CPV |



MAGNETIC NORTH



- NOTES:
1. EXISTING CONDITIONS INFORMATION FOR INFORMATION ONLY; PROVIDED BY OWNER.
 2. UNDERGROUND UTILITIES SHOWN ARE APPROXIMATE LOCATION AND DEPTH. VERIFY ALL EXISTING UTILITIES, ENGINEER OR O.M.
 3. CONTACT UTILITY COMPANIES FOR EXACT LOCATION AND DEPTH.
 4. FOR INFORMATION PURPOSE ONLY, VERIFY ALL EXISTING CONDITIONS.

LEGEND

| OBJECT | DESCRIPTION |
|--------|------------------------------|
| | ASPHALT PAVEMENT |
| | CONCRETE / CONCRETE SIDEWALK |
| | CONCRETE CURB |
| | BUILDING |
| | CHAIN LINK FENCE |
| | SPLIT RAIL FENCE |
| | TREE / BUSH |
| | PROPERTY LINE |
| | CONTOUR |
| | SPOT ELEVATION |
| | OVERHEAD ELECTRIC |
| | UTILITY POLE |
| | UNDERGROUND ELECTRIC |
| | SANITARY SEWER |
| | MANHOLE |
| | STORM DRAIN |
| | CATCH BASIN |
| | GUARDRAIL |

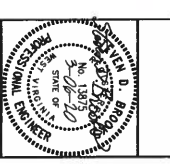
1 EXISTING SITE CONDITIONS PLAN - STEENROD ELEMENTARY

| REVISIONS | BY |
|-----------|----|
| | |

These designs and drawings are copyrighted property of McKinley Architecture + Engineering, Inc. Reproduction of the material herein or excerpted from in substantial part without the express written permission of McKinley Architecture + Engineering, Inc. violates the copyright laws of the United States and will be subject to legal prosecution.

TITLE: EXISTING CONDITIONS
 PROJECT: STEENROD ELEMENTARY SCHOOL
 100 CLARKS LANE
 WHEELING, WV 26003

McKINLEY
 ARCHITECTURE + ENGINEERING
 WHEELING, WEST VIRGINIA 26003 P (304)233-0140 F
 (304)233-4613
 WWW.MCKINLEYDELIVERS.COM

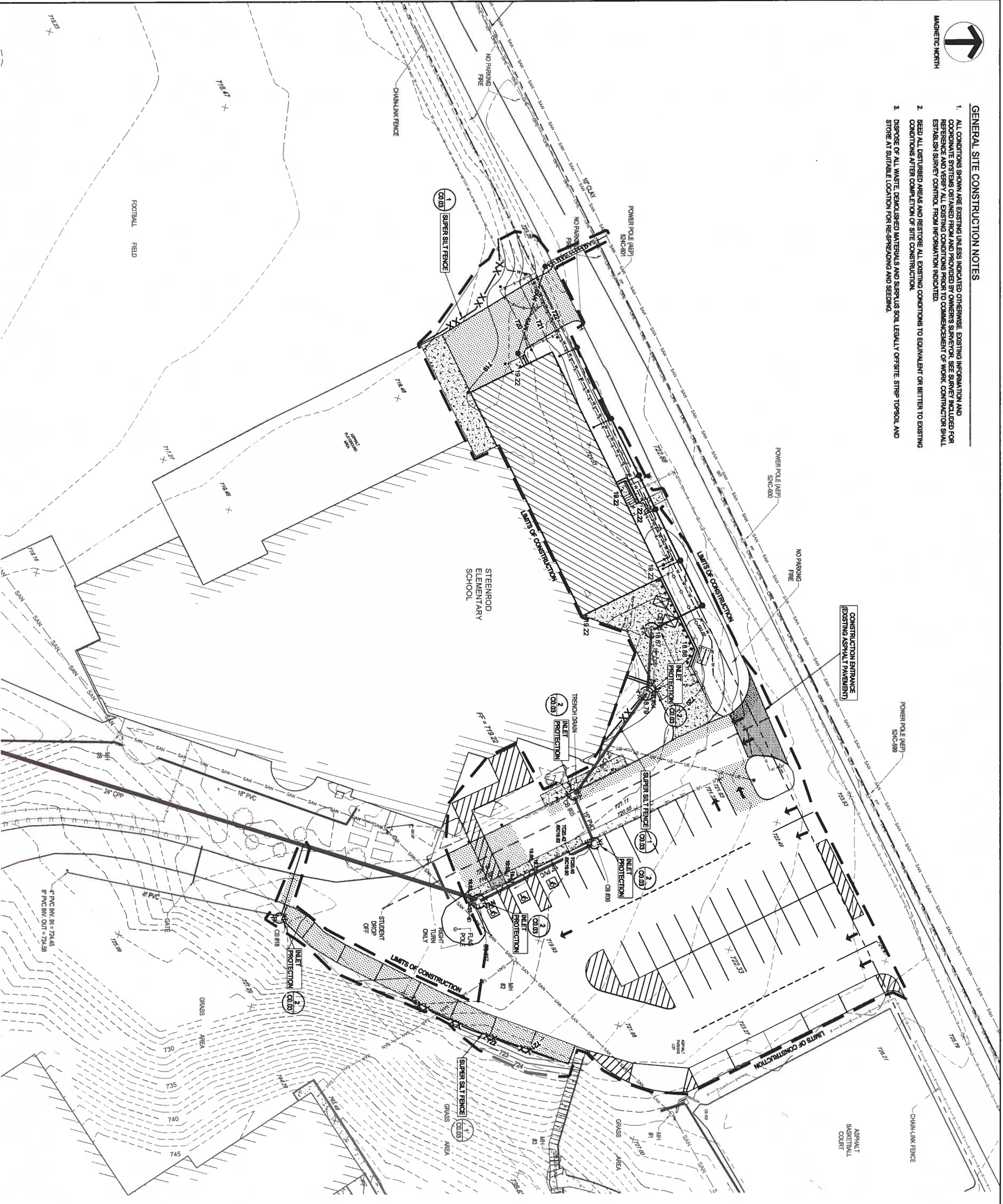


DATE: 03/06/2020
 SCALE: AS NOTED
 CONTRACT: LAWSON
 PROJECT NO.: 16023.01
 SHEET: C0.01



GENERAL SITE CONSTRUCTION NOTES

1. ALL CONDITIONS SHOWN ARE EXISTING UNLESS INDICATED OTHERWISE. EXISTING INFORMATION AND COORDINATE SYSTEMS OBTAINED FROM AND PROVIDED BY OWNER'S SURVEYOR. SEE SURVEY INCLUDED FOR REFERENCE AND VERIFY ALL EXISTING CONDITIONS PRIOR TO COMMENCEMENT OF WORK. CONSTRUCTION SHALL ESTABLISH SURVEY CONTROL FROM INFORMATION INDICATED.
2. SEED ALL DISTURBED AREAS AND RESTORE ALL EXISTING CONDITIONS TO EQUIVALENT OR BETTER TO EXISTING CONDITIONS AFTER COMPLETION OF SITE CONSTRUCTION.
3. DISPOSE OF ALL WASTE DEMOLISHED MATERIALS AND SURPLUS SOIL LEGALLY OFF-SITE. STRIP TOPSOIL AND STORE IN SUITABLE LOCATION FOR RE-SPREADING AND SEEDING.



SEDIMENT AND EROSION CONTROL LEGEND

| SYMBOL | DESCRIPTION |
|---------|-------------------------------|
| XX XX | SILT FENCE AROUND CATCH BASIN |
| XX XX | SUPER SILT FENCE |
| --- --- | CONSTRUCTION LIMITS |
| --- --- | CONSTRUCTION ENTRANCE |

NOTES:

1. SEE SHEET C0.01 FOR EXISTING CONDITIONS.
2. ALL EROSION AND SEDIMENT CONTROLS TO BE MAINTAINED DURING LUMP FINAL GRASSES ARE ESTABLISHED AND ALL DISTURBED AREAS STABILIZED.
3. SEE SHEET C0.03 FOR EROSION AND SEDIMENT CONTROL NOTES AND DETAILS.
4. SEED NON ASPHALT OR NON GRAVEL AREAS IN CONSTRUCTION LIMITS ON DISTURBED AREAS WITH PERMANENT SEEDING MIX.

LEGEND

| SYMBOL | EXISTING | NEW | DESCRIPTION |
|---------|------------------------------|------------------------------|------------------------------|
| --- --- | ASPHALT PAVEMENT | ASPHALT PAVEMENT | ASPHALT PAVEMENT |
| --- --- | CONCRETE / CONCRETE SIDEWALK | CONCRETE / CONCRETE SIDEWALK | CONCRETE / CONCRETE SIDEWALK |
| --- --- | CONCRETE CURB | CONCRETE CURB | CONCRETE CURB |
| --- --- | BUILDING | BUILDING | BUILDING |
| --- --- | CHAIN LINK FENCE | CHAIN LINK FENCE | CHAIN LINK FENCE |
| --- --- | SPLIT RAIL FENCE | SPLIT RAIL FENCE | SPLIT RAIL FENCE |
| --- --- | TREE / BUSH | TREE / BUSH | TREE / BUSH |
| --- --- | PROPERTY LINE | PROPERTY LINE | PROPERTY LINE |
| --- --- | CONTOUR | CONTOUR | CONTOUR |
| --- --- | SPOT ELEVATION | SPOT ELEVATION | SPOT ELEVATION |
| --- --- | OVERHEAD ELECTRIC | OVERHEAD ELECTRIC | OVERHEAD ELECTRIC |
| --- --- | UTILITY POLE | UTILITY POLE | UTILITY POLE |
| --- --- | UNDERGROUND ELECTRIC | UNDERGROUND ELECTRIC | UNDERGROUND ELECTRIC |
| --- --- | SANITARY SEWER | SANITARY SEWER | SANITARY SEWER |
| --- --- | MANHOLE | MANHOLE | MANHOLE |
| --- --- | CLEANOUT | CLEANOUT | CLEANOUT |
| --- --- | WATER LINE | WATER LINE | WATER LINE |
| --- --- | STORM DRAIN | STORM DRAIN | STORM DRAIN |
| --- --- | CATCH BASIN | CATCH BASIN | CATCH BASIN |
| --- --- | GUARDRAIL | GUARDRAIL | GUARDRAIL |

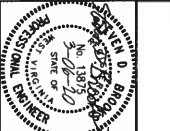
REVISIONS

| NO. | DATE | DESCRIPTION |
|-----|------|-------------|
| | | |
| | | |

These designs and drawings are copyrighted property of McKinley Architecture + Engineering, Inc. Reproduction of the material herein or excerpted from in substantial part without the express written permission of McKinley Architecture + Engineering, Inc. violates the copyright laws of the United States and will be subject to legal prosecution.

TITLE SEDIMENT AND EROSION CONTROL PLAN
PROJECT STEENROD ELEMENTARY SCHOOL
 100 CLARKS LANE
 WHEELING, WV 26003

McKINLEY
 ARCHITECTURE + ENGINEERING
 WHEELING, WEST VIRGINIA 26003 P (304)233-0140 F
 (304)233-4613
 WWW.MCKINLEYDELIVERS.COM



DATE 03/06/2020
SCALE AS NOTED
CONTRACT JAWSON
PROJECT NO. 18029.01
SHEET C0.02

1 SEDIMENT AND EROSION CONTROL PLAN - STEENROD ELEMENTARY

EROSION & SEDIMENT CONTROL NOTES

THIS PROJECT CONSISTS OF THE EXPANSION OF AN EXISTING BUILDING, ASSOCIATED SITE AND UTILITY WORK AND RESTORATION OF AN EXISTING PAVED LOT.

THE SITE WORK WILL CONSIST OF LANDSCAPING AND FILL PLACEMENT TO CREATE AN AREA FOR THE BUILDING EXPANSION, SITE DRAINAGE STRUCTURES, CONSISTING OF CATCH BASINS AND CURBSETS WILL ALSO BE INSTALLED AS PART OF THIS PACKAGE. WATER AND MAINTAIN SEWER LINES WILL ALSO BE INSTALLED.

EXCAVATED MATERIAL REMOVED TO PREPARE THE SITE WILL BE USED AS FILL FOR SURFACE UNDESIRABLE MATERIAL WILL BE WASTED AT AN AREA TO BE PROVIDED BY THE CONTRACTOR.

DURING CONSTRUCTION, THE MAJORITY OF SURFACE PREPARATION, INCLUDING GRADING, LAYING WATER TO REDUCE THE POSSIBILITY OF PROLONGING SEDIMENT LINES WATER DURING CONSTRUCTION, THE BEST MANAGEMENT PRACTICES ARE PROPOSED FOR THE SITE CONSTRUCTION, REGRADING AND THE INSTALLATION ARE AS FOLLOWS:

1. SILT FENCE WILL BE INSTALLED IN ALL AREAS DOWN SLOPE OF ANY PROPOSED CONSTRUCTION. THE FENCE WILL BE INSTALLED ALONG THE CONTOUR.
2. WHERE ANY CHANGES ARE INSTALLED, SET BACKS AND PROTECTORS WILL BE INSTALLED AT EACH INLET TO PREVENT SEDIMENT FROM ENTERING THE DRAINAGE.
3. ALL DISTURBED AREAS WILL BE SEED AS SOON AS POSSIBLE AND TRAVEL AREAS AND PAVED AREAS WILL REMAIN IN PLACE UNTIL THE WORK IS COMPLETE AND ROADWAYS AND PAVED AREAS ARE GRAVELED OR PAVED AND A GOOD STAND OF GRASS IS ESTABLISHED IN NON-PAVED AREAS.

ALL EROSION AND SEDIMENT STRUCTURES WILL BE INSPECTED ONCE EVERY SEVEN CALENDAR DAYS AND WITHIN 24 HOURS OF A STORM EVENT GREATER THAN 0.25 INCHES OF RAIN WITHIN A 24 HOUR PERIOD. ANY REPAIRS OR REPAIRS TO BE MADE SHALL BE MADE AS SOON AS POSSIBLE AND WHEN DEPTH REACHES ONE-HALF FENCE HEIGHT.

AREAS RESPONSIBLE TO BE SEED WILL BE SEED IN ACCORDANCE WITH SPECIFICATIONS SECTION 3283.

STABILIZATION MEASURES SHALL BE INITIATED AS SOON AS PRACTICABLE IN PORTIONS OF THE SITE WHERE CONSTRUCTION ACTIVITIES HAVE TEMPORARILY OR PERMANENTLY CEASED, BUT IN NO CASE SHALL THE PERIOD EXCEED 90 DAYS AFTER THE CONSTRUCTION ACTIVITY IN THAT SECTION OF THE SITE HAS PERMANENTLY CEASED.

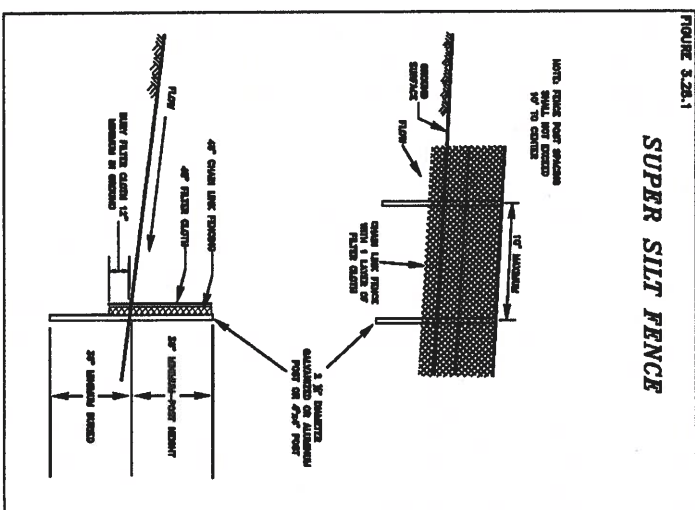
WHERE CONSTRUCTION ACTIVITY WILL WITHIN 14 DAYS FROM WHEN ACTIVITIES CEASED, (E.G. THE TOTAL PERIOD THAT CONSTRUCTION ACTIVITY IS TEMPORARILY HALTED IS LESS THAN 14 DAYS) THEN STABILIZATION MEASURES DO NOT HAVE TO BE INITIATED ON THAT PORTION OF THE SITE BY THE SEVENTH DAY AFTER CONSTRUCTION ACTIVITIES HAVE TEMPORARILY CEASED.

AREAS WHERE THE SEED HAS FAILED TO GERMINATE ADEQUATELY (UNEVEN GERMINAL, VEGETATIVE COVER WITH A DENSITY OF 75% WITHIN 30 DAYS AFTER SEEDING AND MOWING WILL BE RESEED IMMEDIATELY, OR AS SOON AS WEATHER CONDITIONS ALLOW.

ALL EROSION AND SEDIMENT CONTROL STRUCTURES TO BE INSTALLED AND MAINTAINED IN ACCORDANCE WITH THE BEST MANAGEMENT PRACTICE MANUAL OF THE WEST VIRGINIA DEP.

THE BARRIERS SHOWN ON THE ESD PLAN ARE TO BE USED AS THE MINIMUM REQUIRED STRUCTURES. SITE CONDITIONS, CONSTRUCTION PHASING AND METHODS AND LEGAL REQUIREMENTS MAY REQUIRE ADDITIONAL STRUCTURES BE INSTALLED TO INSURE ADEQUATE PROTECTION.

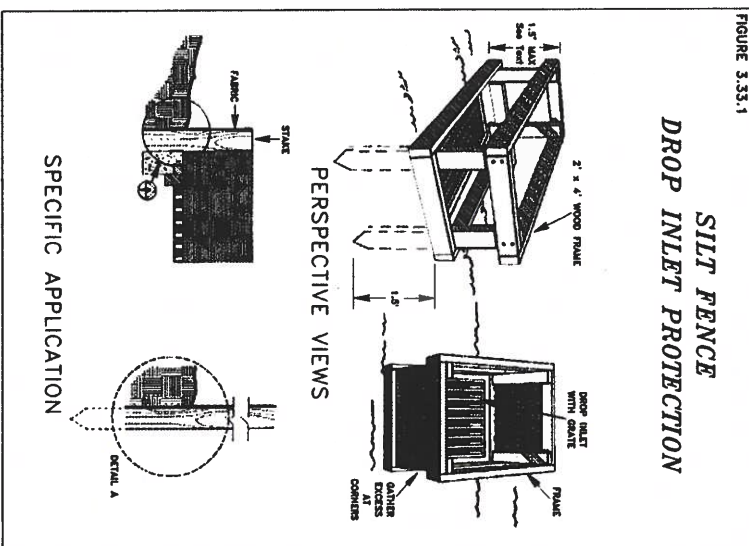
SUPER SILT FENCE



328-3

1 SUPER SILT FENCE
NOT TO SCALE

SILT FENCE DROP INLET PROTECTION



333-7

2 DROP INLET PROTECTION
NOT TO SCALE

REVISIONS BY

These designs and drawings are copyrighted property of McKinley Architecture + Engineering, Inc. Reproduction of the material herein or excerpted from in substantial part without the express written permission of McKinley Architecture + Engineering, Inc. violates the copyright laws of the United States and will be subject to legal prosecution.

TITLE: **SEDIMENT AND EROSION CONTROL DETAILS**
PROJECT: **STEENROD ELEMENTARY SCHOOL
100 CLARKS LANE
WHEELING, WV 26003**

McKINLEY
ARCHITECTURE + ENGINEERING
WHEELING, WEST VIRGINIA 26003 P (304)233-0140 F
(304)233-4613
WWW.MCKINLEYDELIVERS.COM





DATE: 03/06/2020
SCALE: AS NOTED
CONTACT: JAMISON
PROJECT No.: 18029.01
SHEET

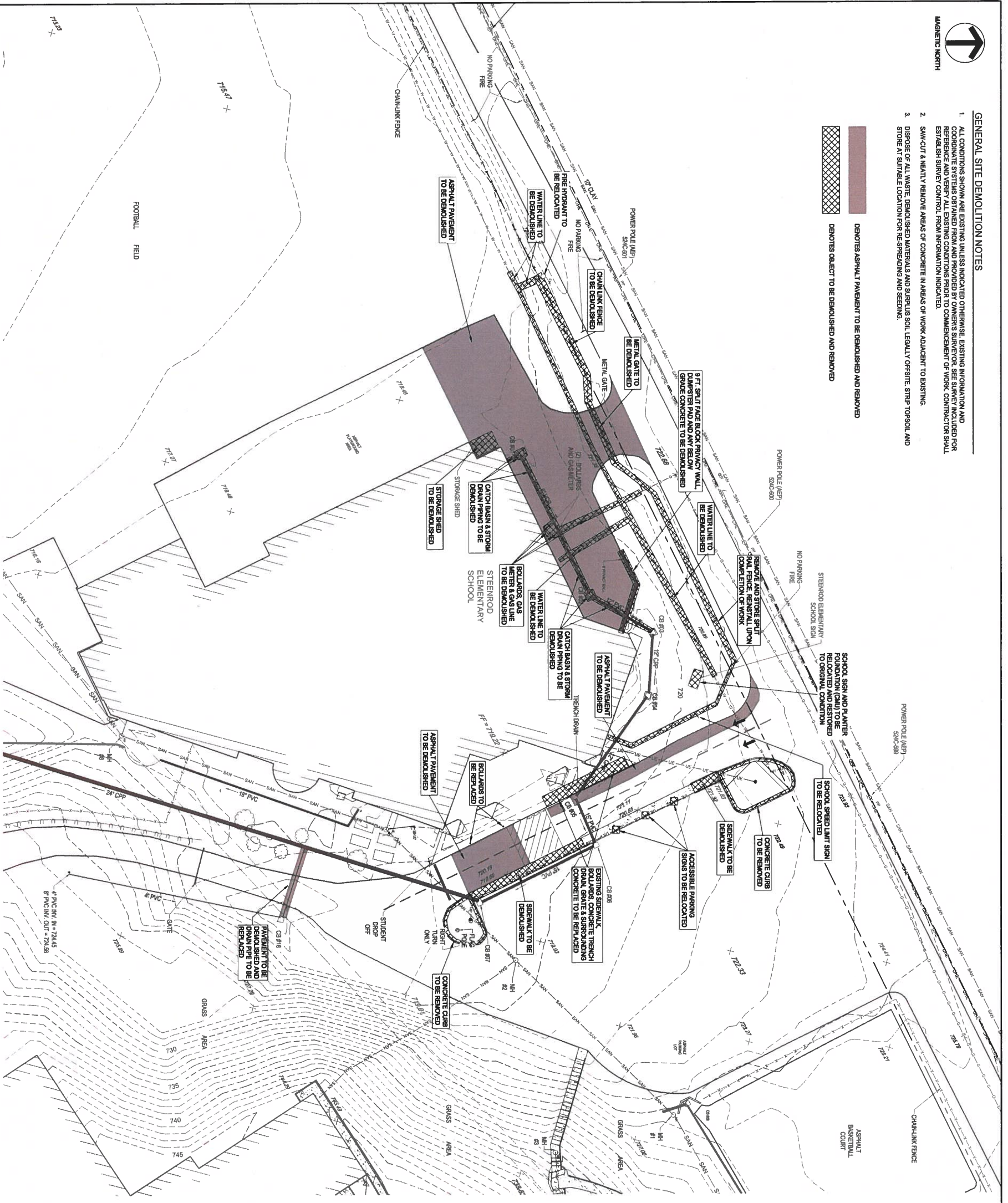
C0.03













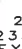





GENERAL SITE DEMOLITION NOTES

1. ALL CONDITIONS SHOWN ARE EXISTING UNLESS INDICATED OTHERWISE. EXISTING INFORMATION AND CORROBORATE SYSTEMS OBTAINED FROM AND PROVIDED BY OWNERS SURVEYOR. SEE SURVEY INCLUDED FOR REFERENCE AND VERIFY ALL EXISTING CONDITIONS PRIOR TO COMMENCEMENT OF WORK. CONTRACTOR SHALL ESTABLISH SURVEY CONTROL FROM INFORMATION INDICATED.
2. SAW-CUT & HEAVILY REMOVE AREAS OF CONCRETE IN AREAS OF WORK ADJACENT TO EXISTING.
3. DISPOSE OF ALL WASTE, DEMOLISHED MATERIALS AND SURPLUS SOIL LEGALLY OFF-SITE. STRIP TOPSOIL AND STORE AT SUITABLE LOCATION FOR RE-SPREADING AND SEEDING.

-  DENOTES ASPHALT PAVEMENT TO BE DEMOLISHED AND REMOVED
-  DENOTES OBJECT TO BE DEMOLISHED AND REMOVED



LEGEND

| OBJECT | DESCRIPTION |
|---|------------------------------|
|  | ASPHALT PAVEMENT |
|  | CONCRETE / CONCRETE SIDEWALK |
|  | CONCRETE CURB |
|  | BUILDING |
|  | CHAIN LINK FENCE |
|  | SPLIT RAIL FENCE |
|  | TREE / BUSH |
|  | PROPERTY LINE |
|  | CONTOUR |
|  | SPOT ELEVATION |
|  | OVERHEAD ELECTRIC |
|  | UTILITY POLE |
|  | UNDERGROUND ELECTRIC |
|  | SAINTARY SEWER |
|  | MANHOLE |
|  | WATER LINE |
| | STORM DRAIN |
| | CATCH BASIN |
| | GUARDRAIL |

TITLE: DEMOLITION PLAN
 PROJECT: STEENROD ELEMENTARY SCHOOL
 100 CLARKS LANE
 WHEELING, WV 26003

These designs and drawings are copyrighted property of McKinley Architecture + Engineering, Inc. Reproduction of the material herein or excerpted from in substantial part without the express written permission of McKinley Architecture + Engineering, Inc., violates the copyright laws of the United States and will be subject to legal prosecution.



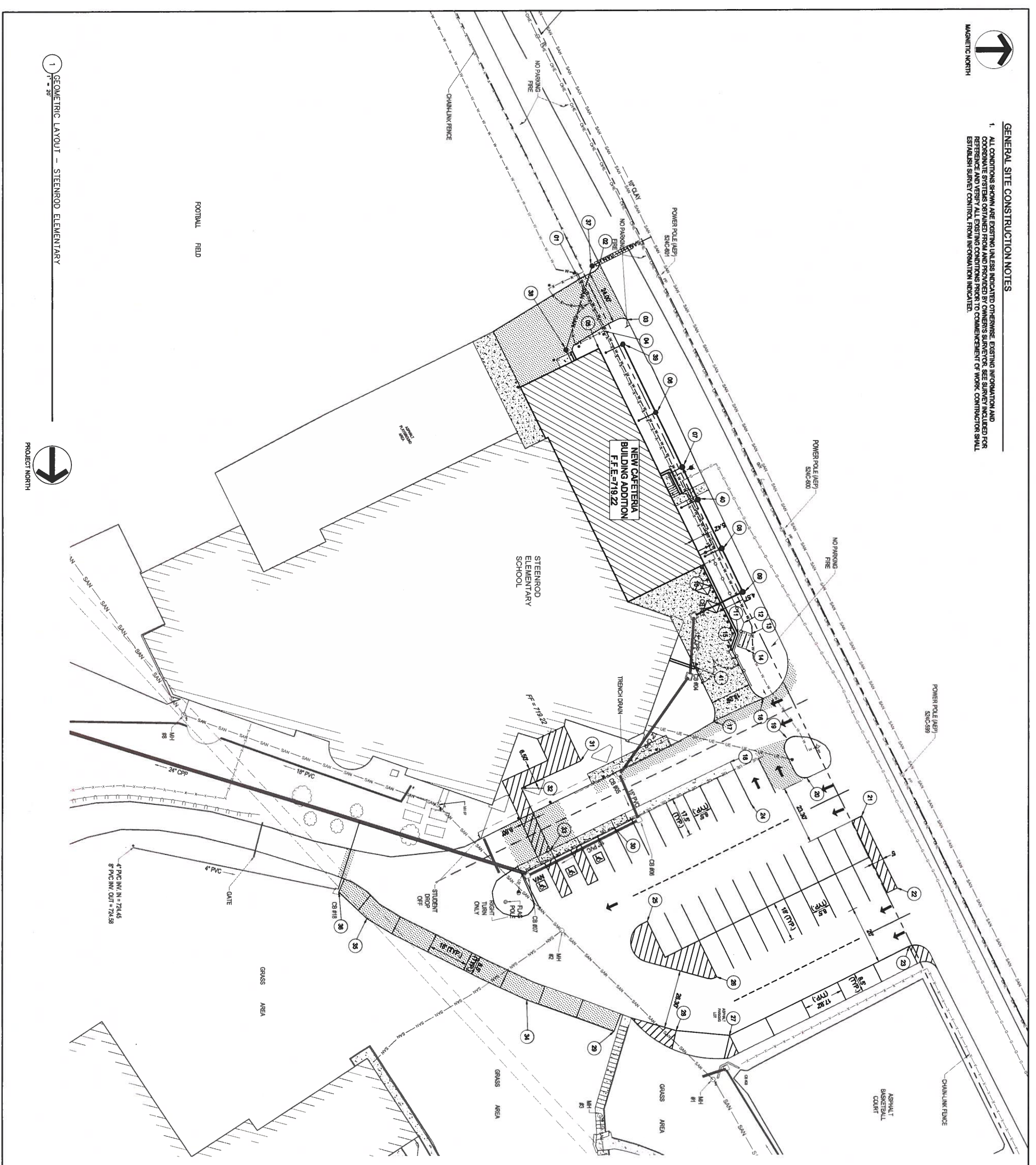
McKINLEY
 ARCHITECTURE + ENGINEERING
 WHEELING, WEST VIRGINIA 26003 P (304)233-0140 F
 (304)233-4613
 WWW.MCKINLEYDELIVERS.COM

PROJECT NO. 1627301
 CONTRACT: JDM/JSM
 SCALE: AS NOTED
 DATE: 03/08/2020
 SHEET: C1.01



GENERAL SITE CONSTRUCTION NOTES

1. ALL CONDITIONS SHOWN ARE EXISTING UNLESS INDICATED OTHERWISE. EXISTING INFORMATION AND COORDINATE SYSTEMS OBTAINED FROM AND PROVIDED BY OWNER'S SURVEYOR. SEE SURVEY INCLUDED FOR REFERENCE AND VERIFY ALL EXISTING CONDITIONS PRIOR TO COMMENCEMENT OF WORK. CONTRACTOR SHALL ESTABLISH SURVEY CONTROL FROM INFORMATION INDICATED.



| STAKEOUT POINT DATA | | |
|---------------------|------------|--------------|
| POINT | NORTHING | EASTING |
| 01 | 570,417.23 | 1,639,269.26 |
| 02 | 570,427.50 | 1,639,264.96 |
| 03 | 570,439.91 | 1,639,109.95 |
| 04 | 570,424.47 | 1,639,115.06 |
| 05 | 570,417.23 | 1,639,122.82 |
| 06 | 570,424.54 | 1,639,151.65 |
| 07 | 570,422.26 | 1,639,176.24 |
| 08 | 570,422.26 | 1,639,212.94 |
| 09 | 570,491.72 | 1,639,232.36 |
| 10 | 570,474.45 | 1,639,219.95 |
| 11 | 570,489.62 | 1,639,211.16 |
| 12 | 570,492.24 | 1,639,246.10 |
| 13 | 570,466.52 | 1,639,251.17 |
| 14 | 570,493.13 | 1,639,258.10 |
| 15 | 570,497.00 | 1,639,258.07 |
| 16 | 570,500.04 | 1,639,260.35 |
| 17 | 570,478.66 | 1,639,260.53 |
| 18 | 570,466.13 | 1,639,268.06 |
| 19 | 570,515.66 | 1,639,297.28 |
| 20 | 570,522.32 | 1,639,315.27 |
| 21 | 570,545.13 | 1,639,333.33 |
| 22 | 570,560.09 | 1,639,365.65 |
| 23 | 570,566.20 | 1,639,392.11 |
| 24 | 570,495.62 | 1,639,328.02 |
| 25 | 570,469.06 | 1,639,380.04 |
| 26 | 570,480.18 | 1,639,405.28 |
| 27 | 570,485.86 | 1,639,413.74 |
| 28 | 570,461.97 | 1,639,429.50 |
| 29 | 570,434.10 | 1,639,429.81 |
| 30 | 570,434.48 | 1,639,388.42 |
| 31 | 570,418.19 | 1,639,307.92 |
| 32 | 570,392.69 | 1,639,320.19 |
| 33 | 570,405.61 | 1,639,348.11 |
| 34 | 570,395.00 | 1,639,415.33 |
| 35 | 570,323.41 | 1,639,378.74 |
| 36 | 570,310.89 | 1,639,366.78 |
| 37 | 570,424.19 | 1,639,406.75 |
| 38 | 570,412.48 | 1,639,123.36 |
| 39 | 570,437.55 | 1,639,120.99 |
| 40 | 570,472.55 | 1,639,190.72 |
| 41 | 570,470.27 | 1,639,266.08 |

| LEGEND | | DESCRIPTION |
|--------|----------|------------------------------|
| | EXISTING | ASPHALT PAVEMENT |
| | NEW | ASPHALT PAVEMENT |
| | EXISTING | CONCRETE / CONCRETE SIDEWALK |
| | NEW | CONCRETE / CONCRETE SIDEWALK |
| | EXISTING | BUILDING |
| | NEW | BUILDING |
| | EXISTING | CHAIN LINK FENCE |
| | NEW | CHAIN LINK FENCE |
| | EXISTING | SPLIT RAIL FENCE |
| | NEW | SPLIT RAIL FENCE |
| | EXISTING | TREE / BUSH |
| | NEW | TREE / BUSH |
| | EXISTING | OVERHEAD ELECTRIC |
| | NEW | OVERHEAD ELECTRIC |
| | EXISTING | UTILITY POLE |
| | NEW | UTILITY POLE |
| | EXISTING | UNDERGROUND ELECTRIC |
| | NEW | UNDERGROUND ELECTRIC |
| | EXISTING | SANITARY SEWER |
| | NEW | SANITARY SEWER |
| | EXISTING | MANHOLE |
| | NEW | MANHOLE |
| | EXISTING | CLEANOUT |
| | NEW | CLEANOUT |
| | EXISTING | WATER LINE |
| | NEW | WATER LINE |
| | EXISTING | STORM DRAIN |
| | NEW | STORM DRAIN |
| | EXISTING | CATCH BASIN |
| | NEW | CATCH BASIN |
| | EXISTING | GUARDRAIL |
| | NEW | GUARDRAIL |

McKINLEY
ARCHITECTURE + ENGINEERING
WHEELING, WEST VIRGINIA 26003 P (304)233-0140 F
(304)233-4613
WWW.MCKINLEYDELIVERS.COM

TITLE: GEOMETRIC LAYOUT
PROJECT: STEENROD ELEMENTARY SCHOOL
100 CLARKS LANE
WHEELING, WV 26003

DATE: 03/08/2020
SCALE: AS NOTED
CONTRACT: LDAMSON
PROJECT NO.: 18029.01
SHEET: C1.04

These designs and drawings are copyrighted property of McKinley Architecture + Engineering, Inc. Reproduction of the material herein or excerpted from in substantial part without the express written permission of McKinley Architecture + Engineering, Inc. violates the copyright laws of the United States and will be subject to legal prosecution.

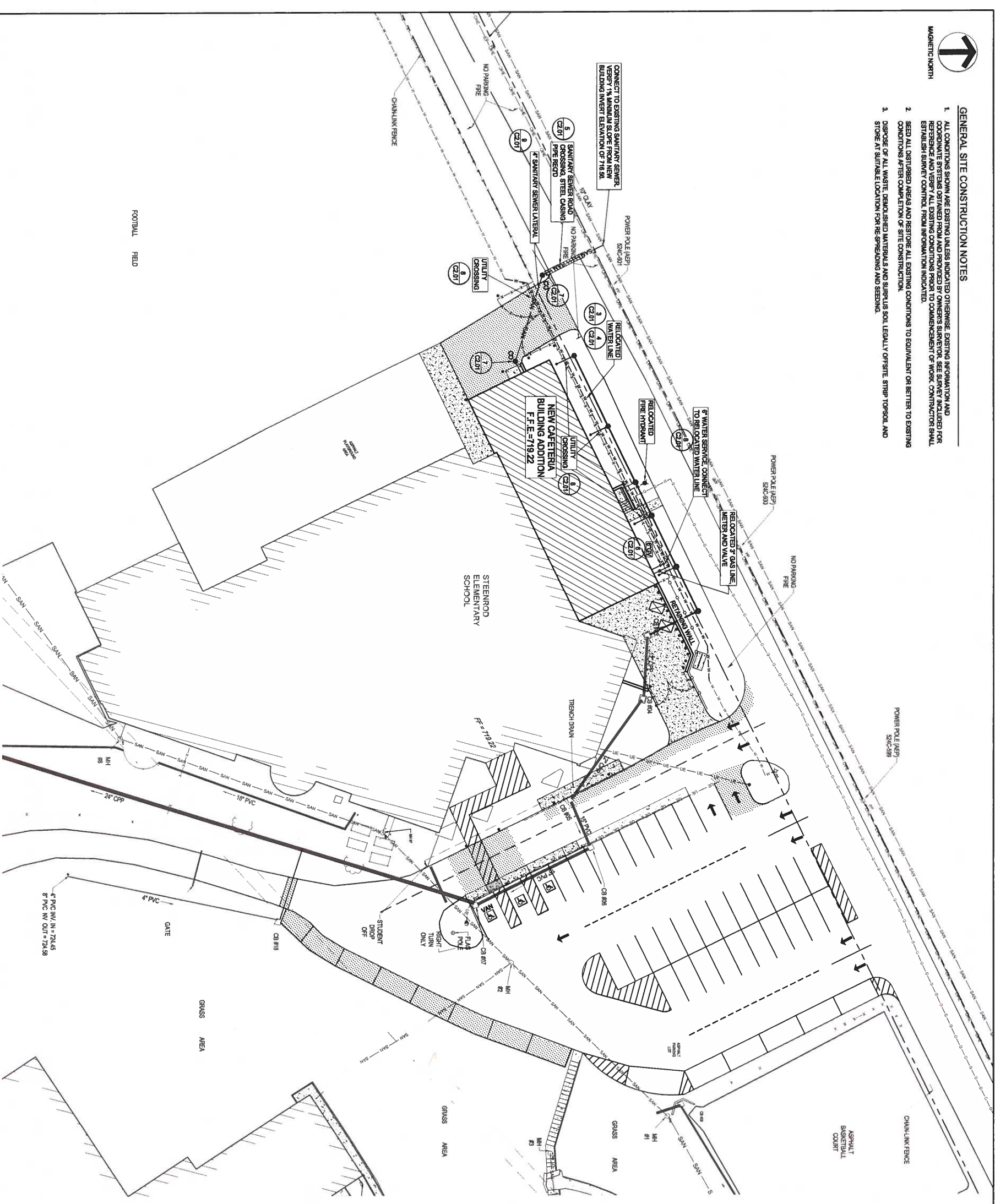
REVISIONS

| NO. | DATE | DESCRIPTION |
|-----|------|-------------|
| | | |
| | | |
| | | |



GENERAL SITE CONSTRUCTION NOTES

1. ALL CONDITIONS SHOWN ARE EXISTING UNLESS INDICATED OTHERWISE. EXISTING INFORMATION AND COORDINATE SYSTEMS OBTAINED FROM AND PROVIDED BY OWNER'S SURVEYOR. SEE SURVEY INCLUDED FOR REFERENCE AND VERIFY ALL EXISTING CONDITIONS PRIOR TO COMMENCEMENT OF WORK. CONTRACTOR SHALL ESTABLISH SURVEY CONTROL FROM INFORMATION INDICATED.
2. SEED ALL DISTURBED AREAS AND RESTORE ALL EXISTING CONDITIONS TO EQUIVALENT OR BETTER TO EXISTING CONDITIONS AFTER COMPLETION OF SITE CONSTRUCTION.
3. DISPOSE OF ALL WASTE, DEMOLISHED MATERIALS AND SURPLUS SOIL LEGALLY OFFSITE. STRIP TOPSOIL AND STORE AT SUITABLE LOCATION FOR RE-SPEADING AND SEEDING.



LEGEND

| EXISTING | NEW | DESCRIPTION |
|----------|-----|------------------------------|
| | | ASPHALT PAVEMENT |
| | | CONCRETE / CONCRETE SIDEWALK |
| | | CONCRETE CURB |
| | | BUILDING |
| | | CHAIN LINK FENCE |
| | | SPLIT RAIL FENCE |
| | | TREE / BUSH |
| | | PROPERTY LINE |
| | | OVERHEAD ELECTRIC |
| | | UTILITY POLE |
| | | UNDERGROUND ELECTRIC |
| | | SANITARY SEWER |
| | | MANHOLE |
| | | CLEANOUT |
| | | WATER LINE |
| | | STORM DRAIN |
| | | CATCH BASIN |
| | | GUARDRAIL |

1 SITE UTILITY PLAN - STEENROD ELEMENTARY

C1.05

PROJECT NO. 18029.01

DATE 03/06/2020

SCALE AS NOTED

CONTRACTOR JAWSON

SHEET

McKINLEY

ARCHITECTURE + ENGINEERING

WHEELING, WEST VIRGINIA 26003 P (304)233-0140 F (304)233-4613

WWW.MCKINLEYDELIVERS.COM

TITLE SITE UTILITY PLAN

PROJECT STEENROD ELEMENTARY SCHOOL

100 CLARKS LANE

WHEELING, WV 26003

These designs and drawings are copyrighted property of McKinley Architecture + Engineering, Inc. Reproduction of the material herein or excerpted from in substantial part without the express written permission of McKinley Architecture + Engineering, Inc., violates the copyright laws of the United States and will be subject to legal prosecution.

| REVISIONS | BY |
|-----------|----|
| | |
| | |
| | |



VERTICAL OR HORIZONTAL BENDS VERTICAL OR HORIZONTAL TEES

VERTICAL OR HORIZONTAL WYES CONNECTION TO EXISTING WATER MAIN

3 TYPICAL DETAILS - MECHANICAL JOINT RESTRAINING DEVICES

WORKING PRESSURE: 200 P.S.I. (VERIFY MAX. WORKING PRESSURE)

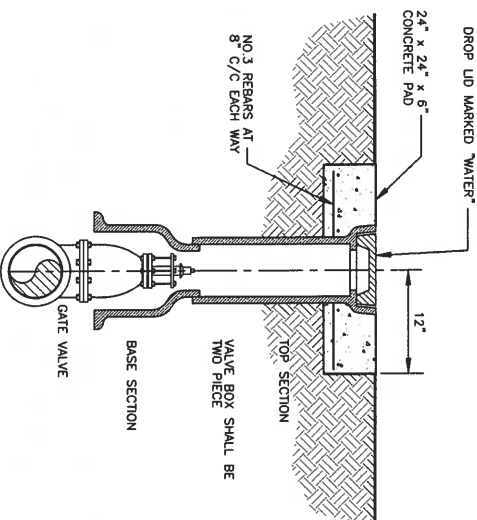
| PIPE SIZE (in) | L = MINIMUM LENGTH OF RESTRAINED PIPE (ft) | |
|----------------|--|----------------------|
| | HORIZ. | VERT. |
| 6 | 52 | 57 |
| | $\Delta=90^\circ$ | $\Delta=45^\circ$ |
| | $\Delta=23.5^\circ$ | $\Delta=11.25^\circ$ |
| | 21 | 24 |
| | 11 | 12 |
| | 6 | 7 |

NOTE:

1. THE RESTRAINED LENGTH OF WATER MAIN IS BASED ON THE FOLLOWING: A WORKING PRESSURE AS SHOWN IN THE TABLES, 3'-0" OF PIPE COVER, AND A SOIL TYPE CLASSIFICATION OF "M".
2. PLUGS SHALL BE RESTRAINED BASED ON THE RESTRAINED LENGTH FOR 90° VERTICAL BENDS.
3. VALVES, TEES, AND WYES SHALL BE RESTRAINED BASED ON THE RESTRAINED LENGTH FOR 45° HORIZONTAL BENDS.
4. EXISTING WATER MAIN ADJACENT TO PROPOSED BENDS, WYES, VALVES, TEES, AND PLUGS SHALL BE UNCOVERED AND THE EXISTING JOINTS SHALL BE RESTRAINED FOR THE LENGTH INDICATED. THE EXISTING WATER MAIN SHALL NOT BE REPLACED WITH JOINT RESTRAINING MECHANISM. THE EXISTING WATER MAIN SHALL BE REPLACED WITH DUCTILE IRON WATER MAIN FOR THE LENGTH INDICATED. MECHANICAL JOINT RESTRAINING MECHANISMS SHALL NOT BE USED ON EXISTING POLYVINYLCHLORIDE (PVC) PIPE.

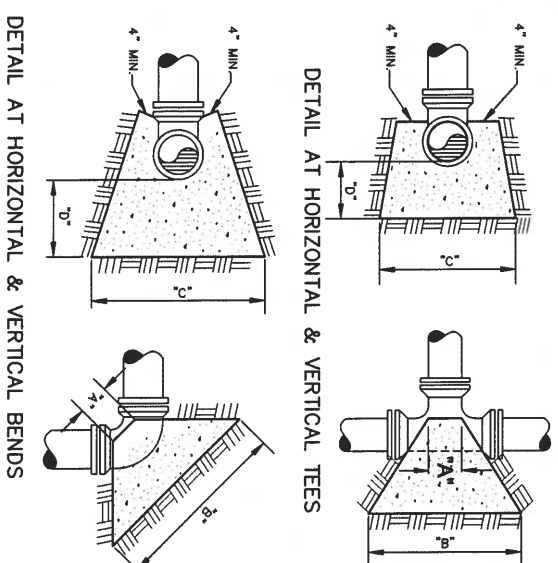
CONSTRUCTION DATA - MECHANICAL JOINT RESTRAINING DEVICES

NOT TO SCALE



6 TYPICAL DETAIL - VALVE BOX

NOT TO SCALE



DETAIL AT HORIZONTAL & VERTICAL TEES

DETAIL AT HORIZONTAL & VERTICAL BENDS

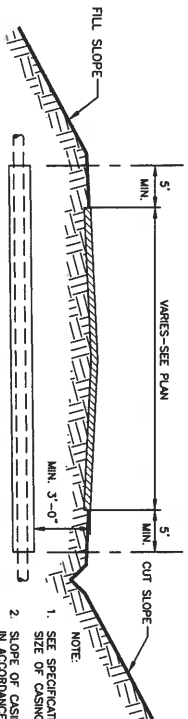
4 TYPICAL DETAILS - CONCRETE THRUST BLOCKS

NOTE: 1. SEE "CONSTRUCTION DATA - CONCRETE THRUST BLOCKS" FOR DIMENSIONS.

WORKING PRESSURE: 200 P.S.I. (VERIFY MAX. WORKING PRESSURE)

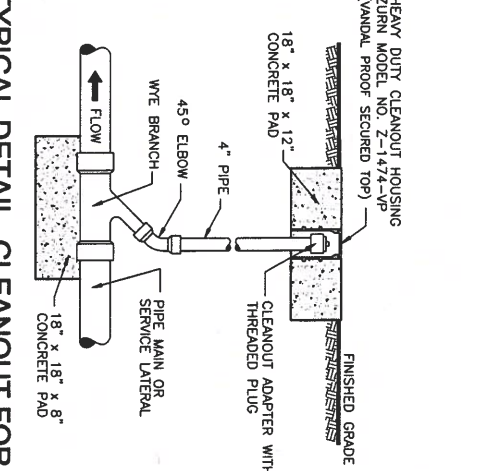
| PIPE SIZE | 90° BENDS | | 45° BENDS | | 22 1/2° BENDS | | 11 1/4° BENDS | | VALVES | |
|-----------|-----------|-------|-----------|--------|---------------|-------|---------------|-------|--------|-------|
| | A | B | C | D | A | B | C | D | A | B |
| 6" | 2'-8" | 1'-8" | 12" | 2'-10" | 2'-4" | 1'-6" | 8" | 2'-4" | 1'-6" | 1'-2" |
| 12" | 2'-8" | 1'-8" | 12" | 2'-10" | 2'-4" | 1'-6" | 8" | 2'-4" | 1'-6" | 1'-2" |

CONSTRUCTION DATA - CONCRETE THRUST BLOCKS



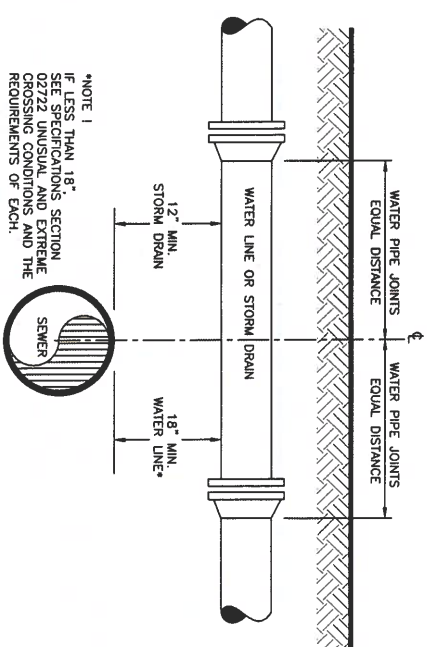
5 TYPICAL DETAIL - SEWER LINE ROAD CROSSING

NOT TO SCALE



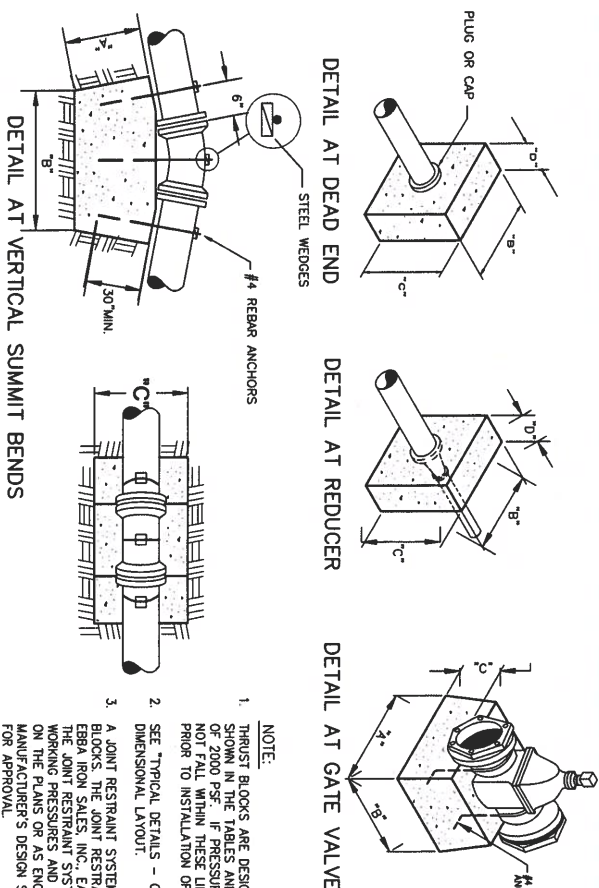
7 TYPICAL DETAIL - CLEANOUT FOR GRAVITY SEWER/STORM SEWER

NOT TO SCALE



8 TYPICAL DETAIL - UTILITY CROSSING

NOT TO SCALE



DETAIL AT REDUCER

DETAIL AT GATE VALVE

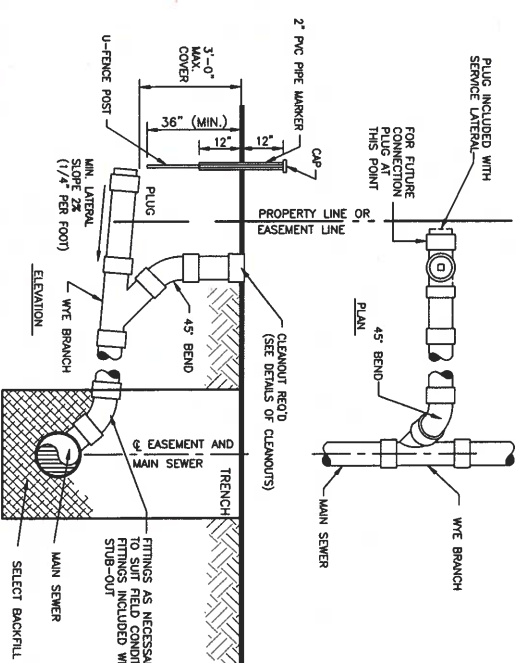
DETAIL AT VERTICAL SUMMIT BENDS

VERTICAL SUMMIT BENDS THRUST BLOCK DATA

| PIPE SIZE | 11 1/4° | | 22 1/2° | | 45° | | REBARS |
|-----------|---------|--------|---------|--------|-------|-------|-----------|
| | A | B | C | D | A | B | |
| 6" | 2'-10" | 2'-10" | 2'-4" | 3'-10" | 3'-4" | 4'-4" | 3 - NO. 4 |

NOTE:

1. THRUST BLOCKS ARE DESIGNED FOR A WORKING PRESSURE AS SHOWN IN THE TABLES AND AN ALLOWABLE SOIL BEARING CAPACITY NOT TO EXCEED 2000 P.S.F. IF PRESSURES AND SOIL BEARING CAPACITIES DO NOT MEET THESE REQUIREMENTS, THE THRUST BLOCKS SHALL BE NOTIFIED PRIOR TO INSTALLATION OF THRUST BLOCKS.
2. SEE "TYPICAL DETAILS - CONCRETE THRUST BLOCKS" FOR DIMENSIONAL LAYOUT.
3. A JOINT RESTRAINING SYSTEM MAY BE USED IN LIEU OF THRUST BLOCKS. THE JOINT RESTRAINING SYSTEM SHALL BE METALLIC BY THE JOINT RESTRAINING SYSTEM MANUFACTURER. THE JOINT RESTRAINING SYSTEM SHALL BE DESIGNED FOR EQUAL WORKING PRESSURES AND SOIL BEARING CAPACITIES AS INDICATED ON THE PLANS OR AS ENCOUNTERED IN THE FIELD. THE MANUFACTURER'S DESIGN SHALL BE SUBMITTED TO THE ENGINEER FOR APPROVAL.



9 DETAILS OF SERVICE CONNECTION STUB-OUT FOR SANITARY SEWER

EQUAL TO OR LESS THAN 6'-0" DEEP

NOT TO SCALE

REVISIONS
BY

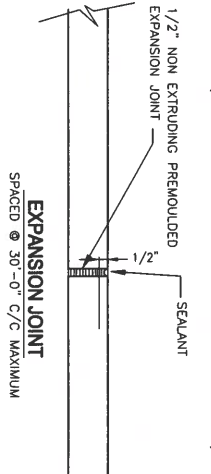
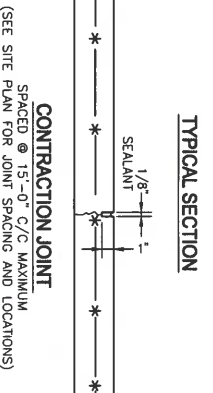
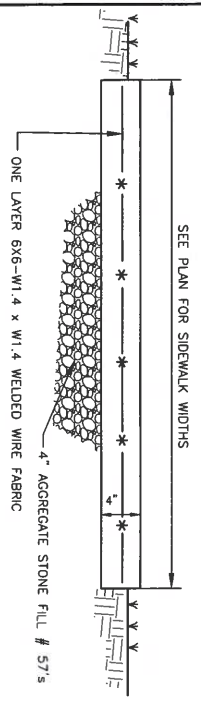
TITLE WATER, SEWER AND SITE DETAILS
PROJECT STEENROD ELEMENTARY SCHOOL
100 CLARKS LANE
WHEELING, WV 26003

McKINLEY
ARCHITECTURE + ENGINEERING
WHEELING, WEST VIRGINIA 26003 P (304)233-0140 F (304)233-4613
WWW.MCKINLEYDELIVERS.COM

DATE 02/06/2020
SCALE AS NOTED
CONTACT JAWSON

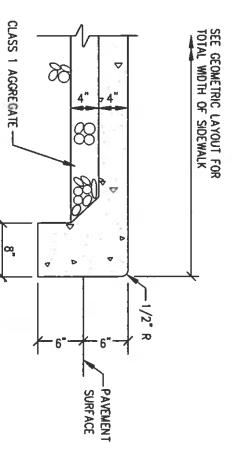
SHEET C2.01
PROJECT No. 18073.01

USE 1/2" NON-EXTENDING PREMOULDED EXPANSION JOINT AND SEALANT WHERE WALK ADJUTS WALLS.

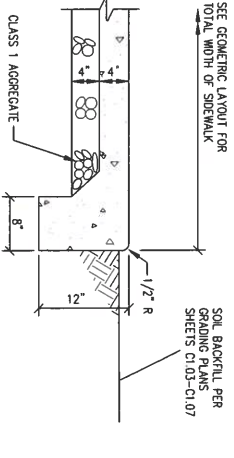


- NOTES:
1. IN LOCATIONS WHERE ALL SURFACE DRAINAGE IS DIRECTED AWAY FROM SIDEWALKS, FINAL GRADE ADJACENT TO BOTH SIDES OF SIDEWALK IS TO BE 2-INCHES BELOW THE EDGE OF THE SIDEWALK.
 2. IN LOCATIONS WHERE SURFACE DRAINAGE FROM ADJACENT AREAS IS DIRECTED ACROSS SIDEWALKS, FINAL GRADE ADJACENT TO THE LOW SIDE OF THE SIDEWALK IS TO BE 2-INCHES BELOW THE EDGE OF THE SIDEWALK. FINAL GRADE ADJACENT TO THE HIGH SIDE OF THE SIDEWALK IS TO MATCH THE FINAL GRADE OF THE SIDEWALK.
 3. THE FIRST 5 FEET OF ALL SIDEWALKS AT DOORWAYS SHALL BE AT 2 PERCENT MAXIMUM GRADE AND SHALL BE AT FINISH FLOOR ELEVATION AT THE FACE OF THE BUILDING.

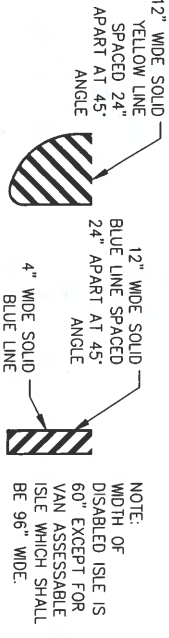
18 TYPICAL DETAIL - SIDEWALK
NOT TO SCALE



19 SIDEWALK END TREATMENT AT PAVEMENT
NOT TO SCALE



14 SIDEWALK END TREATMENT IN SOIL AREA
NOT TO SCALE

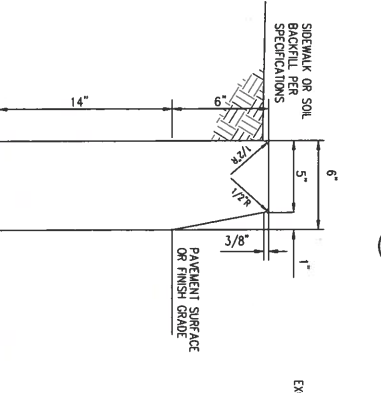


15 TYPICAL PAVEMENT MARKING DETAILS
NOT TO SCALE

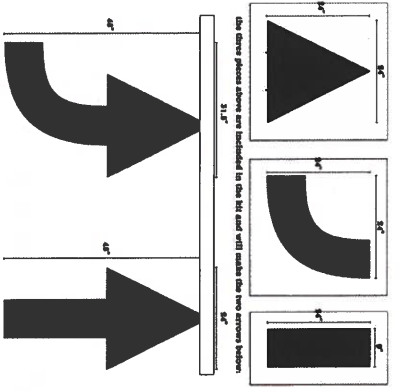
LONGITUDINAL PAVEMENT PATCHING FOR PAVEMENT REPAIR

- GENERAL NOTES:
1. PATCHES SHALL BE PREPARED TO EXTEND A MINIMUM OF 12 INCHES BEYOND THE LIMITS OF DISTURBANCE (BOTH SIDES) AND SHALL BE AT LEAST 2 FEET WIDE.
 2. A LIQUID ASPHALT TACK COAT SHALL BE APPLIED TO PAVEMENT PRIOR TO PLACING ASPHALT PATCH.
 3. FOR ASPHALT PATCHES LESS THAN 25 FEET IN LENGTH, A UNIVERSAL PAVEMENT JOINT: SET A MINIMUM OF 12 INCHES BEYOND THE AREA OF DISTURBANCE, BUT IN NO CASE SHALL IT BE LESS THAN 1 FEET.
 4. FOR SPAN DOORS 25 FEET IN LENGTH OR GREATER, THE EXISTING ASPHALT SHALL BE SAW-CUT OR A. THE PATCH WIDTH SHALL BE A MINIMUM OF 12 INCHES BEYOND THE AREA OF DISTURBANCE, BUT THE PATCH LENGTH SHALL BE A MINIMUM OF 12 FEET FROM EACH END.
 5. PATCHES SHALL BE PREPARED TO EXTEND A MINIMUM OF 12 INCHES BEYOND THE LIMITS OF DISTURBANCE ON BOTH SIDES.
 6. THE AMOUNT OF PAVEMENT DAMAGE AND/OR PATCHING REQUIREMENTS FOR SUB-BASE AND ASPHALT CONCRETE SHALL BE IN ACCORDANCE WITH THE DEPARTMENT OF HIGHWAYS REQUIREMENTS.
 7. ANY DISTURBED PAVEMENT SURFACES SHALL BE REPAIRED TO ORIGINAL FINISH GRADE AND SHALL BE IN ACCORDANCE WITH THE DEPARTMENT OF HIGHWAYS REQUIREMENTS.
 8. THE AMOUNT OF PATCHING REQUIRED SHALL BE DETERMINED BASED UPON FIELD INSPECTION.

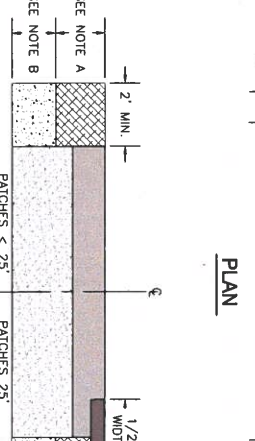
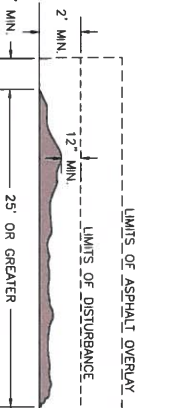
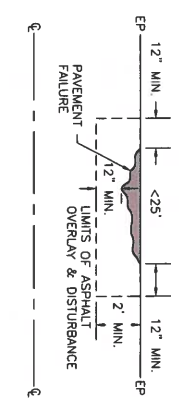
17 TYPICAL DETAIL - LONGITUDINAL PAVEMENT REPAIR
NOT TO SCALE



18 CONCRETE CURBING
NOT TO SCALE

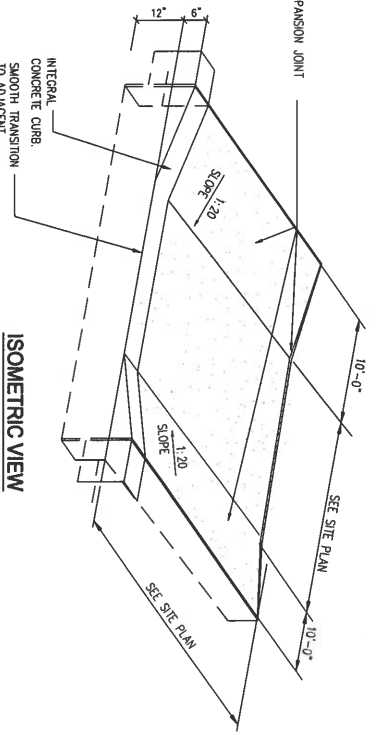


21 TYPICAL DETAIL - TRAFFIC DIRECTIONAL ARROWS
NOT TO SCALE

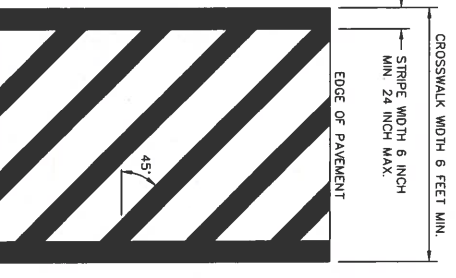


SECTION

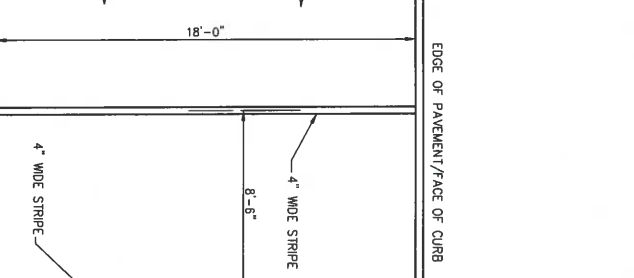
| SYMBOL | DESCRIPTION |
|-----------|--------------------------|
| [Pattern] | PROPOSED SURFACE ASPHALT |
| [Pattern] | PROPOSED ASPHALT |
| [Pattern] | PROPOSED SUB-BASE |
| [Pattern] | EXISTING SUB-BASE |
| [Pattern] | EXISTING ASPHALT |



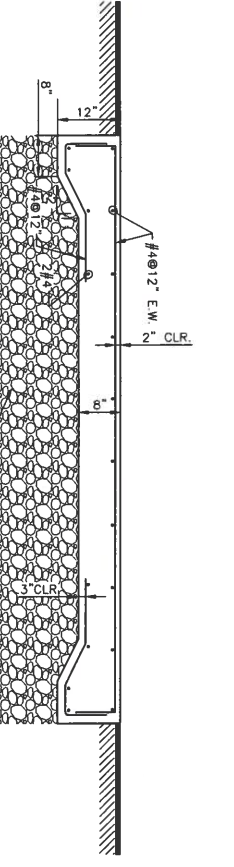
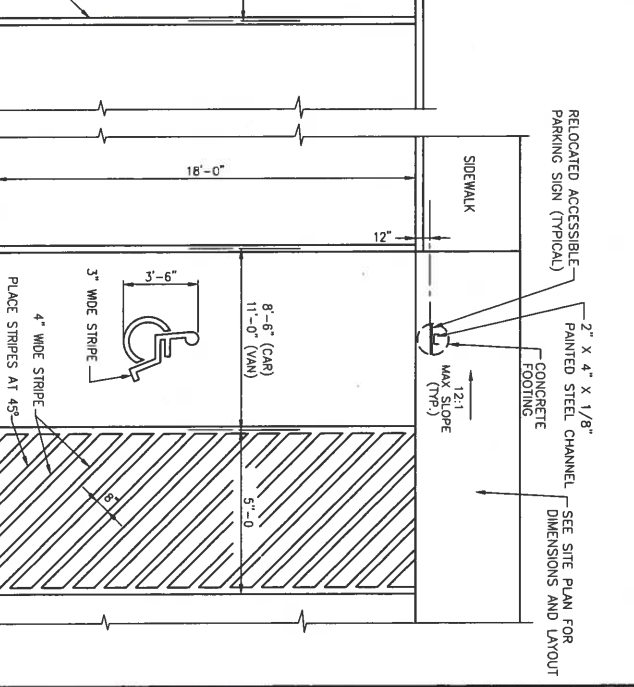
17 TYPICAL CURB RAMP
NOT TO SCALE



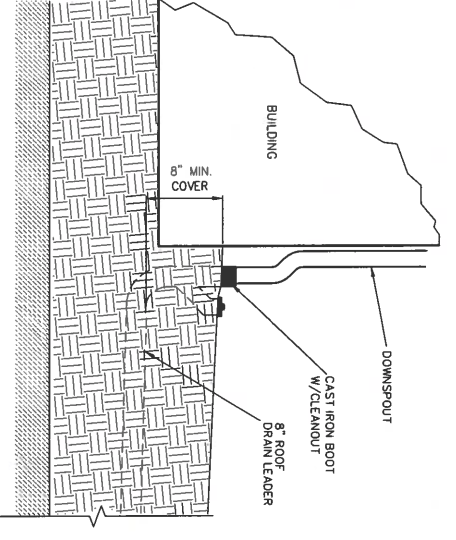
21 TYPICAL DETAIL - CROSSWALK
NOT TO SCALE



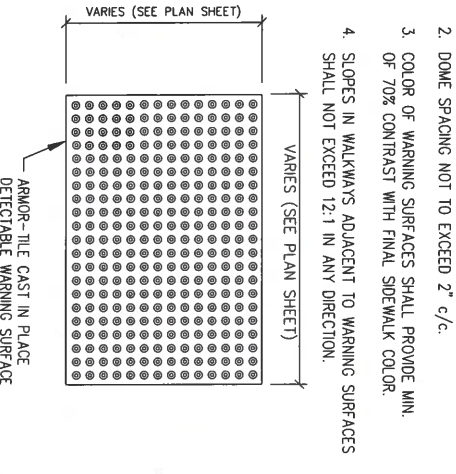
12 TYPICAL DETAIL - PARKING STALL LAYOUT
NOT TO SCALE



18 TYPICAL SECTION - DUMPSTER AREA
NOT TO SCALE



20 TYPICAL DETAIL - DOWNSPOUT ROOF DRAIN CONNECTION
NOT TO SCALE



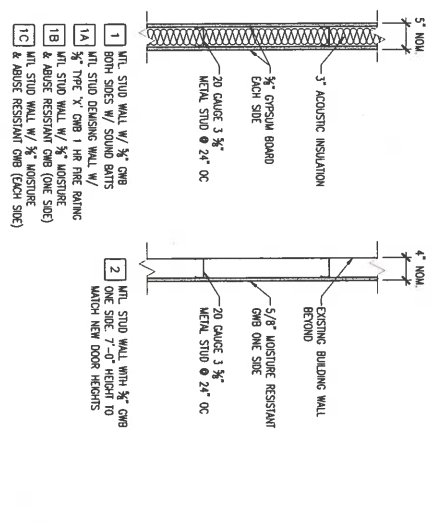
18 DETECTABLE WARNING SURFACE
NOT TO SCALE

| NO. | REVISIONS | BY |
|-----|-----------|----|
| | | |
| | | |

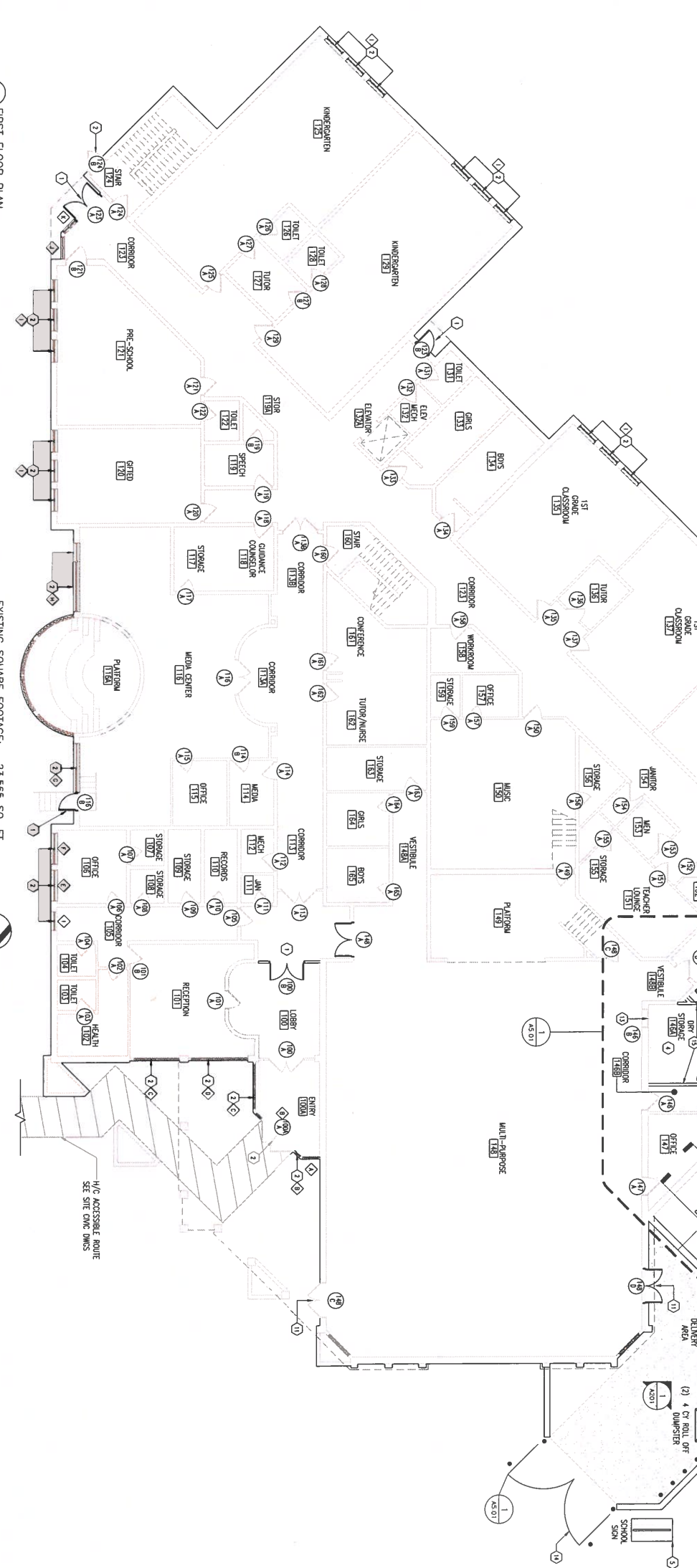
TITLE: DETAILS
PROJECT: STEENROD ELEMENTARY SCHOOL
100 CLARKS LANE
WHEELING, WV 26003

MCKINLEY
ARCHITECTURE + ENGINEERING
WHEELING, WEST VIRGINIA 26003 P (304)233-0140 F (304)233-14613
WWW.MCKINLEYDELIVERS.COM

SHEET: C2.02
DATE: 03/06/2020
SCALE: AS NOTED
CONTACT: JAMISON
PROJECT NO: 18029.01



- 2 NEW PARTITION TYPES**
SCALE: 3/4" = 1'-0"
- 1 MIL STUD WALL W/ 5/8" GIB BOARDS, 5/8" GIBS W/ SOUND BATS W/ 1" AIR SPACE
 - 2 MIL STUD WALL W/ 5/8" GIB BOARDS, 5/8" GIBS W/ MOISTURE RESISTANT GIB ONE SIDE
 - 3 MIL STUD WALL W/ 5/8" GIB BOARDS, 5/8" GIBS W/ MOISTURE RESISTANT GIB ONE SIDE
 - 4 1"-2" CAU INSULATING WALL OF STRUCTURE UNDO

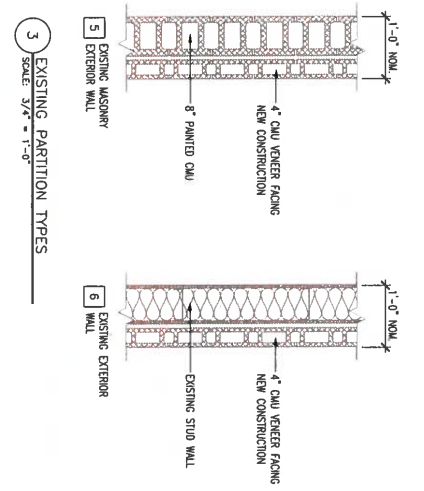


1 FIRST FLOOR PLAN
SCALE: 3/8" = 1'-0"

EXISTING SQUARE FOOTAGE: 23,565 SQ. FT.
NEW SQUARE FOOTAGE: 4,167 SQ. FT.
TOTAL SQUARE FOOTAGE: 27,732 SQ. FT.



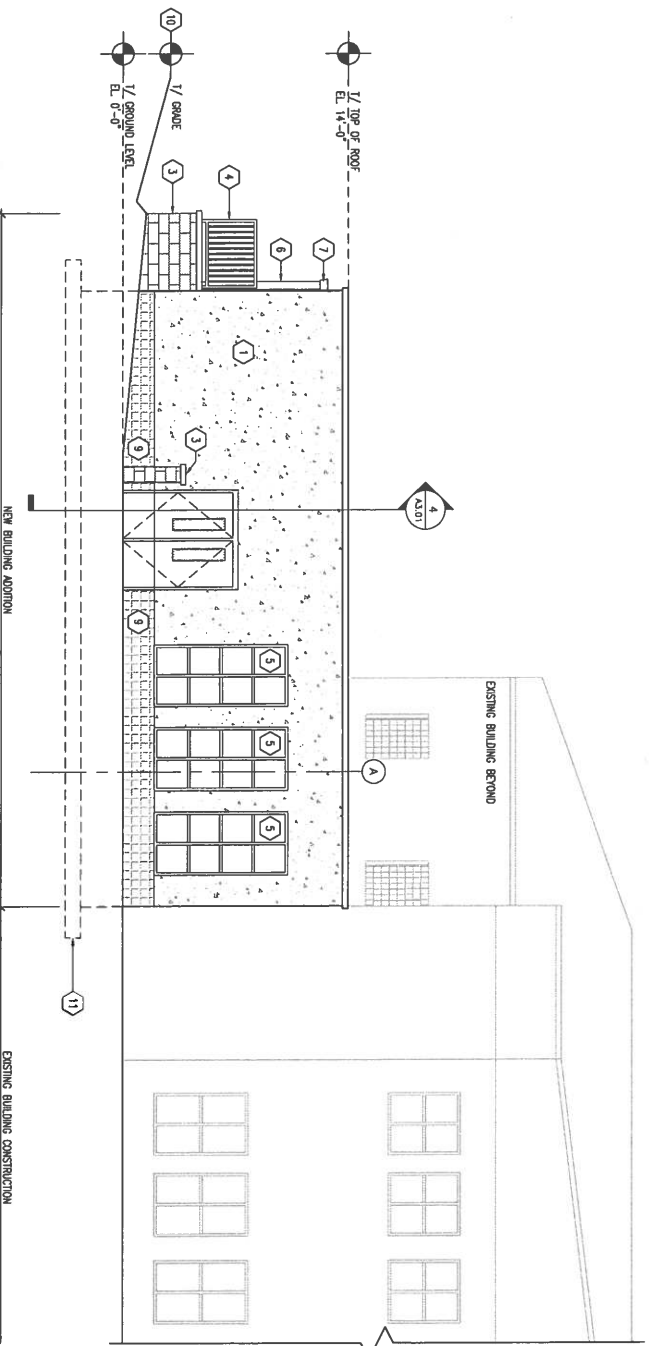
- KEY NOTES**
- 1 NEW SECURITY DOORS AT MAIN ENTRY WITH REMOTE ACCESS CONTROL AT RECEPTION AREA
 - 2 REPLACE EXISTING WINDOW OR DOOR GLASS WITH SECURITY GLASS
 - 3 PAINT AND REFURBISH SEALS AT EXISTING FRAMES
 - 4 REUSE EXISTING JANITOR SINK
 - 5 REUSE EXISTING KITCHEN
 - 6 RELOCATED EXISTING SCHOOL SIGN AND BASE
 - 7 NEW MASONRY RETAINING WALL WITH PRE-CAST CAP
 - 8 NEW RAILING
 - 9 NEW CONCRETE SIDEWALK
 - 10 NEW ONE STORY CAFETERIA ADDITION WITH TWO NEW BOYS AND GIRLS RESTROOMS, LOADING / DELIVERY AREA, DIRT FLOOD AND NOW FOOD STORAGE, AND NEW CAFETERIA SERVICE AREA
 - 11 RELOCATE EXISTING BUILDING GAS, WATER, ELECTRIC LINES AND METERS
 - 12 NEW DOOR AND FRAME
 - 13 NEW DOWNSPOUT
 - 14 INFILL EXISTING DOOR
 - 15 5'-0" DECONCRETE METAL GATE POSTS & LATCH SET CONL & STRUCTURAL DRAWINGS
 - 16 CUT GRID, TEMPORARILY SUPPORT & EXTEND GYPSUM 4" MIN ABOVE EXISTING CEILING
 - 17 DOUBLE TER PAINTED METAL LOCKERS 12" WIDE X 15" DEEP X 78" HIGH (4)



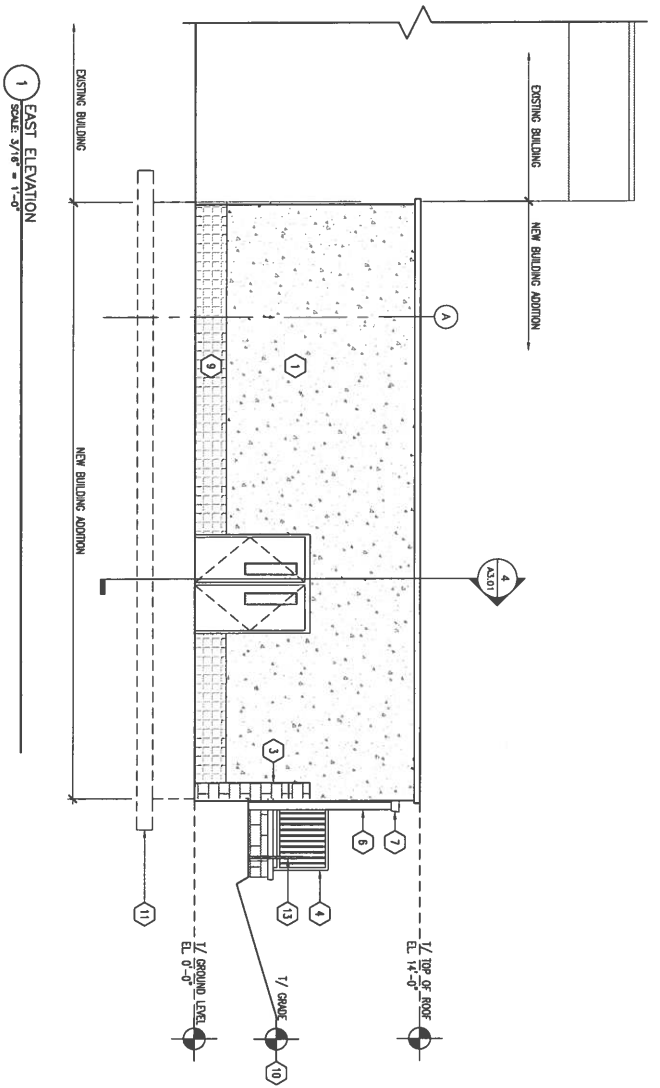
3 EXISTING PARTITION TYPES
SCALE: 3/4" = 1'-0"

| <p>McKINLEY ARCHITECTURE + ENGINEERING WHEELING, WEST VIRGINIA 26003 P (304)233-0140 F (304)233-4613 WWW.MCKINLEYDELIVERS.COM</p> | <p>TITLE: FIRST FLOOR PLAN</p> <p>PROJECT: STEENROD ELEMENTARY SCHOOL 100 CLARKS LANE WHEELING, WV 26003</p> | <p>These designs and drawings are copyrighted property of McKinley Architecture + Engineering, Inc. Reproduction of the material herein or excerpted from in substantial part without the express written permission of McKinley Architecture + Engineering, Inc., violates the copyright laws of the United States and will be subject to legal prosecution.</p> | | | | | | |
|--|--|---|-----|-------------|----|--|--|--|
| | <p>DATE: 03/08/2020 SCALE: AS NOTED CONTACT: S. SWEENEY PROJECT NO.: 1807301</p> | <p>REVISIONS</p> <table border="1"> <tr> <th>NO.</th> <th>DESCRIPTION</th> <th>BY</th> </tr> <tr> <td> </td> <td> </td> <td> </td> </tr> </table> | NO. | DESCRIPTION | BY | | | |
| NO. | DESCRIPTION | BY | | | | | | |
| | | | | | | | | |

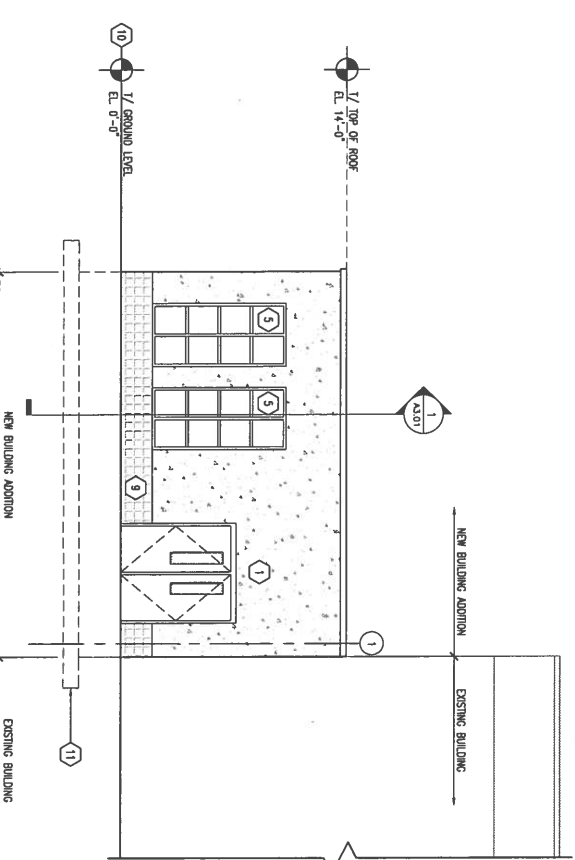
- KEY NOTES**
- 1 NEW CMU MASONRY TO ALIGN WITH AND MATCH EXISTING CMU
 - 2 NEW METAL SIDING & TRIM TO ALIGN WITH AND MATCH EXISTING METAL SIDING
 - 3 CMU RETAINING WALL
 - 4 PAINTED METAL RAILING
 - 5 NEW INSULATED WINDOW SYSTEM
 - 6 NEW DOWNSPOUT
 - 7 NEW GUTTER
 - 8 NOT USED
 - 9 NEW ACCELT CMU TO MATCH & ALIGN WITH EXISTING BUILDING (V.I.F.)
 - 10 APPROXIMATE GRADE LINE: SEE SITE CIVIL DRAWINGS
 - 11 APPROXIMATE LINE CONC. FOOTING SHOWN DASHED: SEE STRUCTURAL DRAWINGS.
 - 12 CONCRETE SIDEWALK TO CONNECT WITH EXISTING
 - 13 1 1/2" METAL HAND RAIL



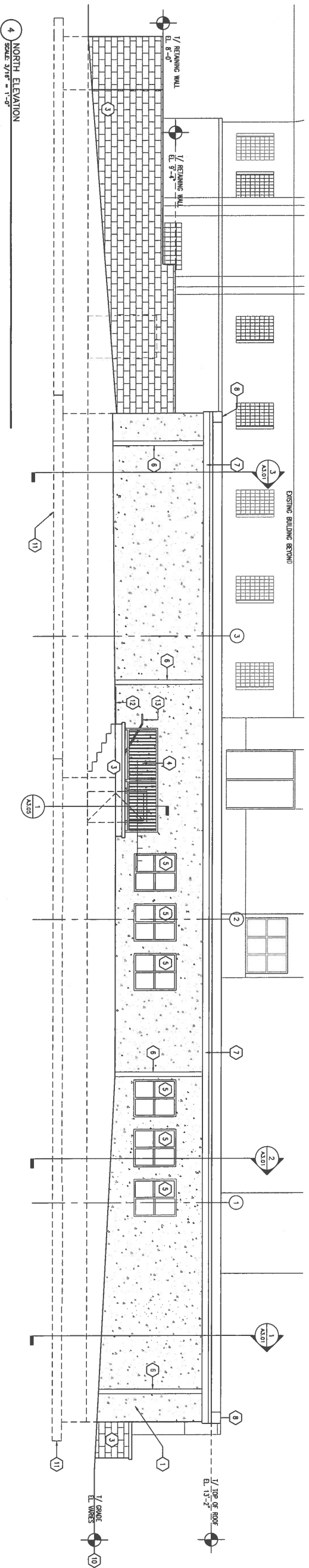
2 WEST ELEVATION
SCALE 3/16" = 1'-0"



1 EAST ELEVATION
SCALE 3/16" = 1'-0"



3 SOUTH ELEVATION
SCALE 3/16" = 1'-0"



4 NORTH ELEVATION
SCALE 3/16" = 1'-0"

McKINLEY
ARCHITECTURE + ENGINEERING
WHEELING, WEST VIRGINIA 26003 P (304)233-0140 F
(304)233-4613
WWW.MCKINLEYDELIVERS.COM

TITLE ELEVATIONS
PROJECT STEENROD ELEMENTARY SCHOOL
100 CLARKS LANE
WHEELING, WV 26003

These designs and drawings are copyrighted property of McKinley Architecture + Engineering, Inc.. Reproduction of the material herein or excerpted from in substantial part without the express written permission of McKinley Architecture + Engineering, Inc., violates the copyright laws of the United States and will be subject to legal prosecution.

REVISIONS
BY

DATE 01/06/2020
SCALE AS NOTED
CONTACT S. SWENNEY
PROJECT NO. 18235.01
SHEET A2.01